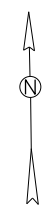


13.35-13.37
0.02 MI. EXCEP.
OVER U.S. 64

3.15-3.64
0.49 MI. EXCEP.
OVER S.H. 284

DISTRICT I
COUNTY MAP PRODUCED BY
COMPUTER ASSISTED CARTOGRAPHY



STATE HIGHWAY
ROUTE AND SECTION MAP
CROSS COUNTY
ARKANSAS
1 0 1 2 3 4
MILES
SHOWING
BRIDGE LOG NUMBERS