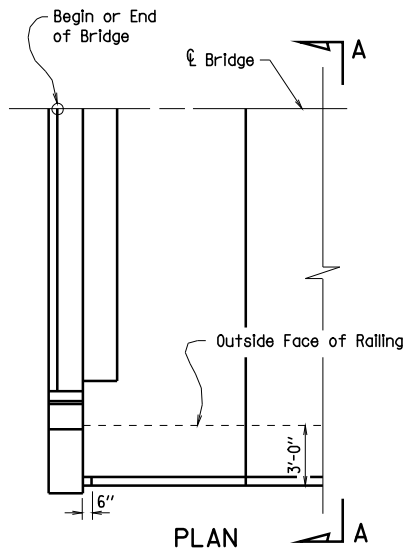
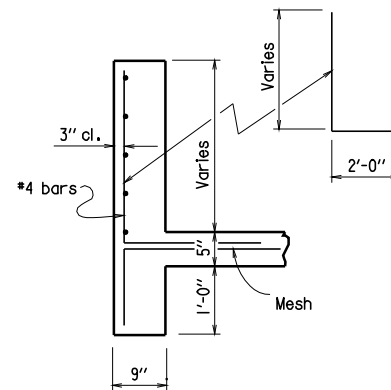
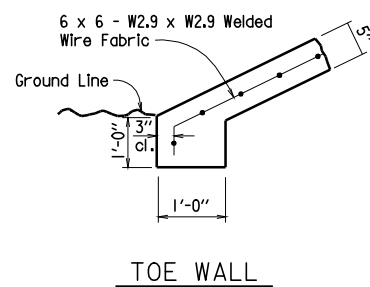
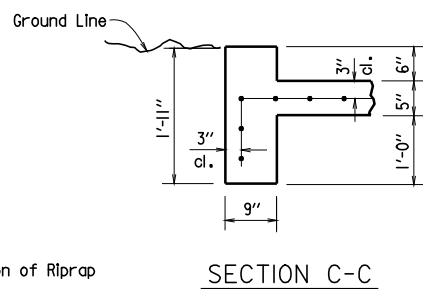
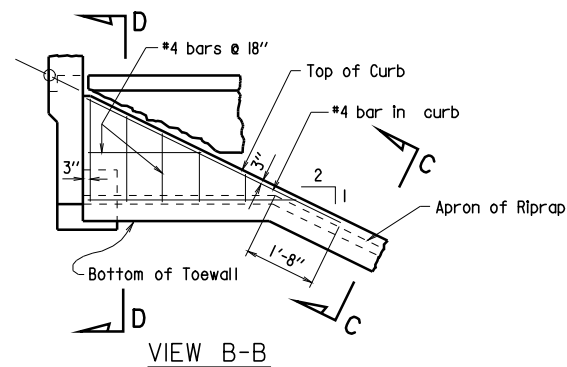
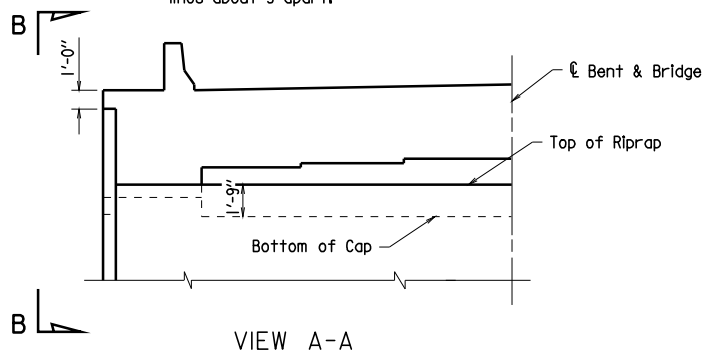


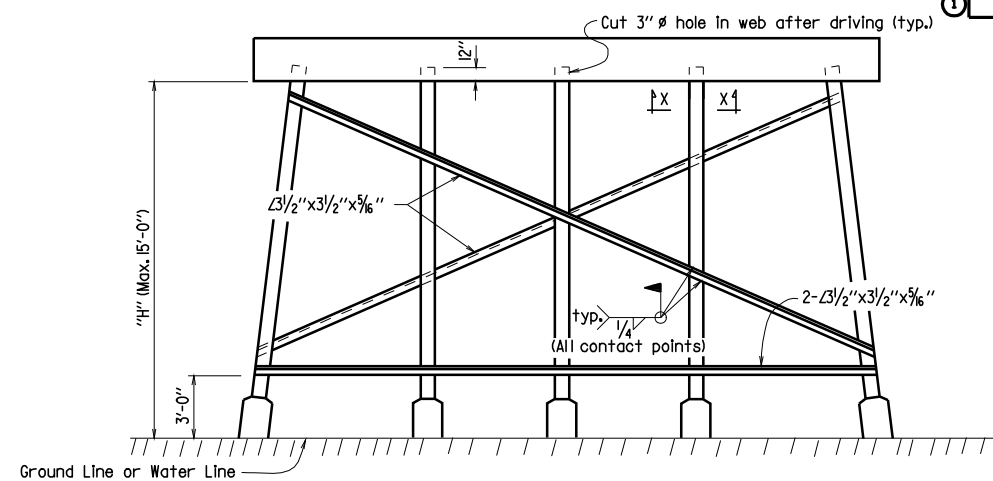
DATE REVISED	DATE FILMED	DATE REVISED	DATE FILMED	FED. ROAD DIST. NO.	STATE	FED. AID PROJ. NO.	SHEET NO.	TOTAL SHEETS
04-10-2003				6	ARK.			
							JOB NO.	
							1	RIPRAP & PILE - I4995A



Note:
Sloped surfaces of concrete riprap to be marked off into blocks (construction joints optional) with an approved grooving tool, spacing the grooved lines about 5' apart.



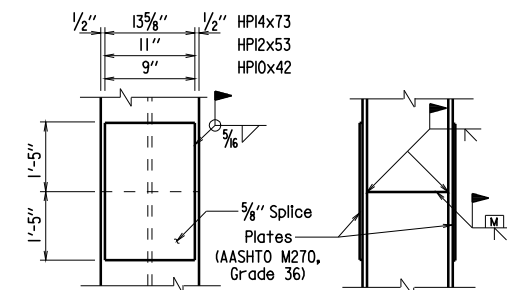
DETAILS OF CONCRETE RIPRAP



Note:
All bracing shall be cut and welded in the field. Each brace shall be furnished in one piece. Payment shall be made under item 807.
Omit bottom bracing where "H" is less than 10 ft. Omit all bracing where "H" is less than 5 ft.

Note:
Where required by the bridge layout sheet, pile encasements shall be constructed.
Omit bracing (and V-groove in cap) where pile encasement is extended to bottom of bent cap.

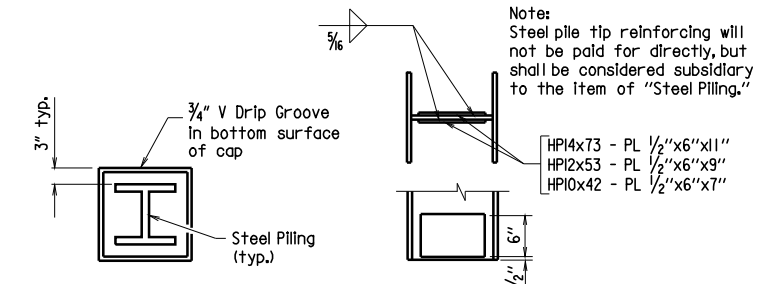
TYPICAL BRACING FOR INT. STEEL PILE BENTS



Note:
The contractor may for his own convenience and at his own expense provide as many as three splices per pile for steel bearing piling. Minimum spacing between splices shall be 5 ft.

PILE SPlice DETAIL

Scale: 1" = 1'-0"

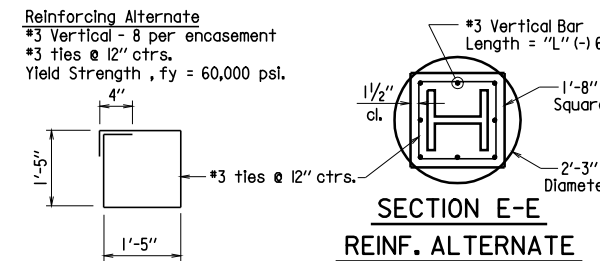


Note:
Steel pile tip reinforcing will not be paid for directly, but shall be considered subsidiary to the item of "Steel Piling."

REINFORCING DETAIL FOR STEEL PILE TIP

Scale: 1" = 1'-0"

Reinforcing Alternate
#3 Vertical - 8 per encasement
#3 ties @ 12" ctrs.
Yield Strength, $f_y = 60,000$ psi.

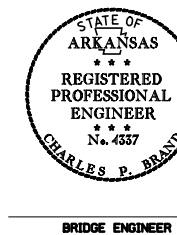


SECTION E-E REINFORCING ALTERNATE

Revised and redrawn MJT 04-10-2003
Chk'd. By: CJF 04-10-2003

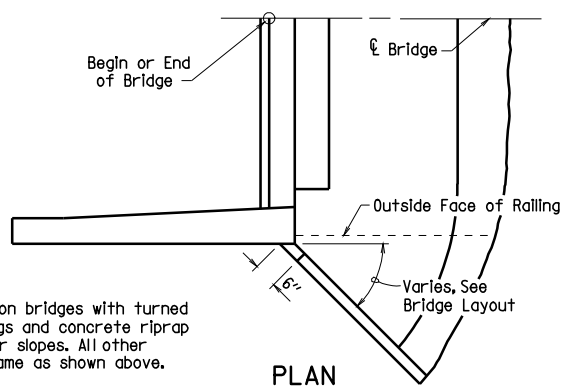
DETAILS OF CONCRETE RIPRAP AND MISC. DETAILS OF STEEL PILING
ROUTE SEC.
ARKANSAS STATE HIGHWAY COMMISSION
LITTLE ROCK, ARK.

DRAWN BY: MJT DATE: 04-10-2003 FILENAME: B14995A.STD
CHECKED BY: CJF DATE: 04-10-2003 SCALE: No Scale or As Noted
DESIGNED BY: STD DATE: —
BRIDGE NO. DRAWING NO. I4995A



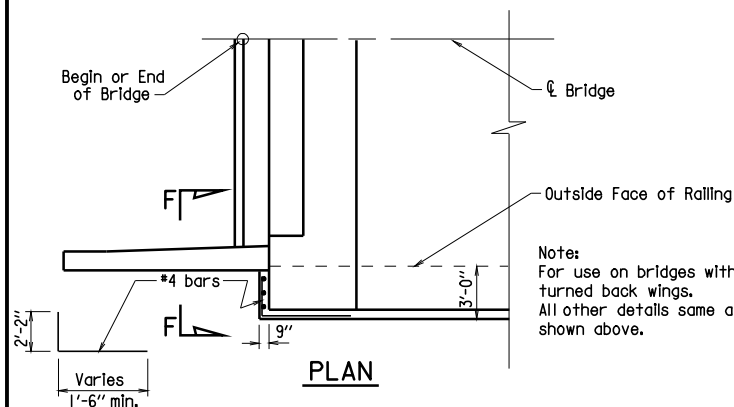
Note:
If concrete cannot be placed in the dry, seal concrete may be deposited under water. Concrete & welded wire fabric or reinforcing in encasements shall be paid for at the contract unit price per linear foot bid for "Pile Encasement."

PILE ENCAsEMENT DETAIL



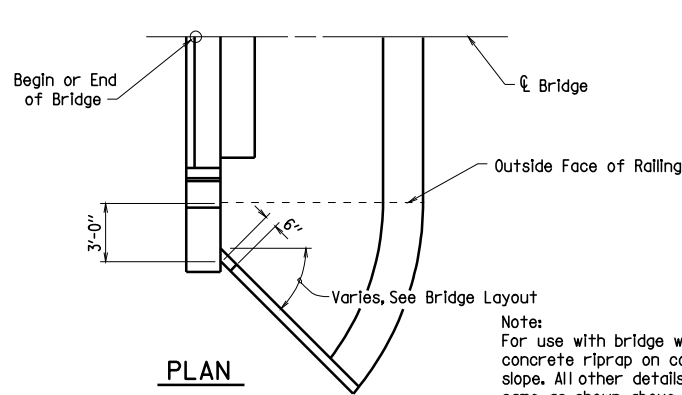
Note:
For use on bridges with turned back wings and concrete riprap on corner slopes. All other details same as shown above.

PLAN



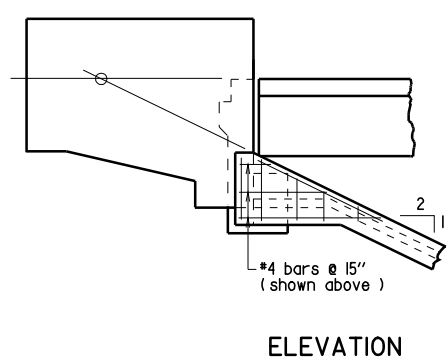
Note:
For use on bridges with turned back wings. All other details same as shown above.

PLAN

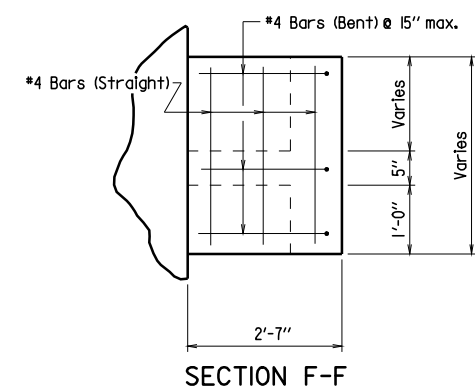


Note:
For use with bridge with concrete riprap on corner slope. All other details same as shown above.

PLAN



ELEVATION



SECTION F-F