

DATE REVISED	DATE FILMED	DATE REVISED	DATE FILMED	FED. ROAD DIST. NO.	STATE	FED. AID PROJ. NO.	SHEET NO.	TOTAL SHEETS
11-15-00	11-15-00	10-09-03		6	ARK.			
08-23-01	08-23-01							
11-16-01								

BAR LIST PER BENT

Note: Bars designated with an "E" are to be epoxy coated.

MARK	NO. REQ'D.		LENGTH	'A'	'B'	P.D.	BENDING DIAGRAMS
	END BT.	INT. BT.					
B401	30	30	10'-0"	2'-8"	2'-2"	2"	
B402	12	15	6'-10"	2'-8"	2'-2"	2"	
B403	2	-	28'-2"	-	-	Str.	
B404	4	-	6'-1"	5'-2"	1'-0"	2"	
B405	6	-	7'-11"	5'-2"	2'-10"	2"	
B406	4	-	6'-1"	4'-6"	1'-8"	2"	
B407	6	-	7'-11"	4'-6"	3'-6"	2"	
B408	30	-	3'-8"	-	-	Str.	
B409	10	-	3'-3"	1'-8"	1'-8"	2"	
B410	-	2	27'-2"	-	-	Str.	
B601	6	-	28'-2"	-	-	Str.	
B602	-	6	27'-2"	-	-	Str.	
* S701E (See Precast Concrete Span Unit Bar List for number required)							
B701	5	-	28'-2"	-	-	Str.	
B702	-	5	27'-2"	-	-	Str.	

* Payment for this bar is included in Precast Concrete Units

General Notes

1 Design Specifications : AASHTO Standard Specifications for Highway Bridges, 2002 edition, and Interim specifications.

Live Load : HS20

Method of Design : Load Factor

Seismic Performance Category : A

Piling : All piling shall be 16" Oct. or 16" Sq. precast concrete piles and shall be driven to a minimum safe bearing capacity of 44 tons per pile. Octagonal or Square piling shapes shall not be mixed on any bridge.

Concrete : All concrete shall be Class "S" and have a minimum 28 day compressive strength $F'_c = 3500$ psi. All exposed corners shall be chamfered $\frac{3}{4}$ " unless otherwise noted.

Reinforcing Steel : Reinforcing steel shall conform to AASHTO M 31 OR M 53, Grade 60.

3 Roofing Felt shall meet or exceed the requirements of ASTM D224 Type I. See Section 802.18 (d). The roofing felt shall be in one piece for the full length of the cap and three layers shall be used. Roofing Felt shall not be paid for directly, but shall be considered subsidiary to the pay items for Precast Concrete Units.

Preformed Joint Filler shall conform to AASHTO M153, Type I and shall not be paid for directly but shall be considered subsidiary to the pay items for Precast Concrete Units.

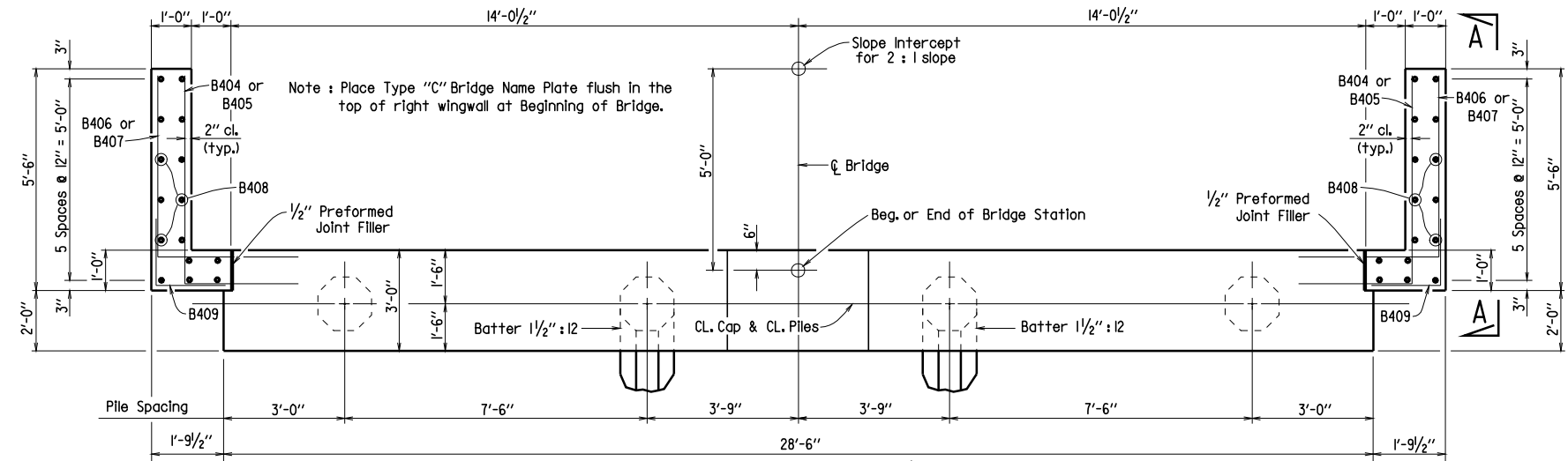
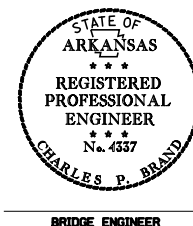
For Details of Standard Concrete Piles, see Dwg. No. 2383.
For Details of 31'-0" Precast Concrete Spans, See Dwg. No. 15240 & 15230.

QUANTITIES

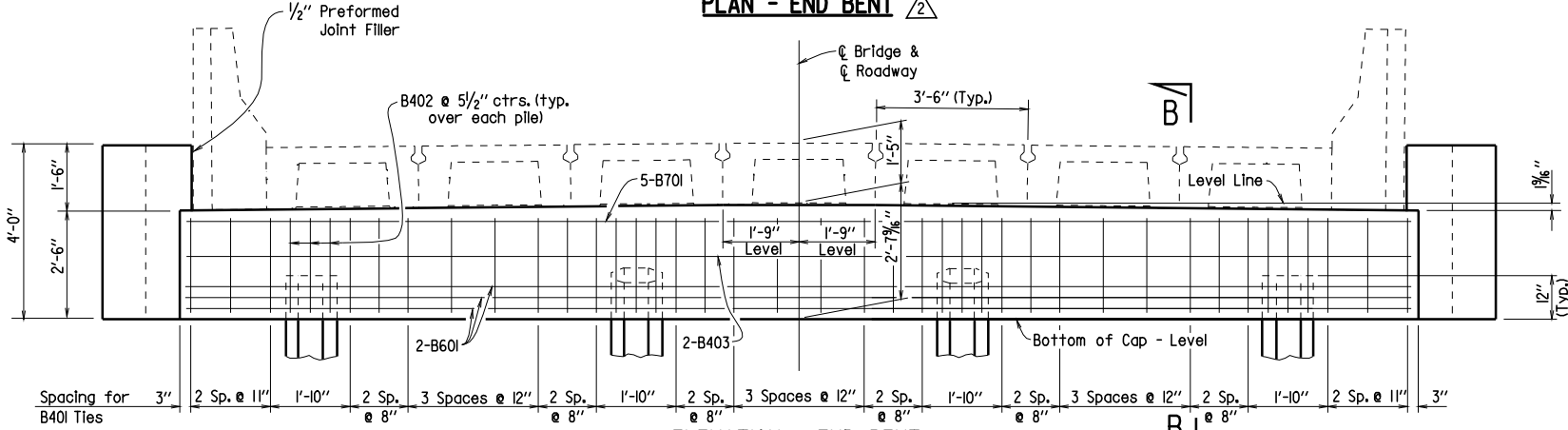
Bent Type	Class "S" Concrete - Bridge	Reinforcing Steel (Gr. 60) - Bridge
Int.	7.9 Cu. Yds.	830 Lbs.
End	10.1 Cu. Yds.	1030 Lbs.

DETAILS OF STANDARD PILE BENTS (16" PRECAST PILES) FOR 31'-0" PRECAST CONCRETE SPANS - 24'-6" RDWY. ROUTE SEC. ARKANSAS STATE HIGHWAY COMMISSION LITTLE ROCK, ARK.

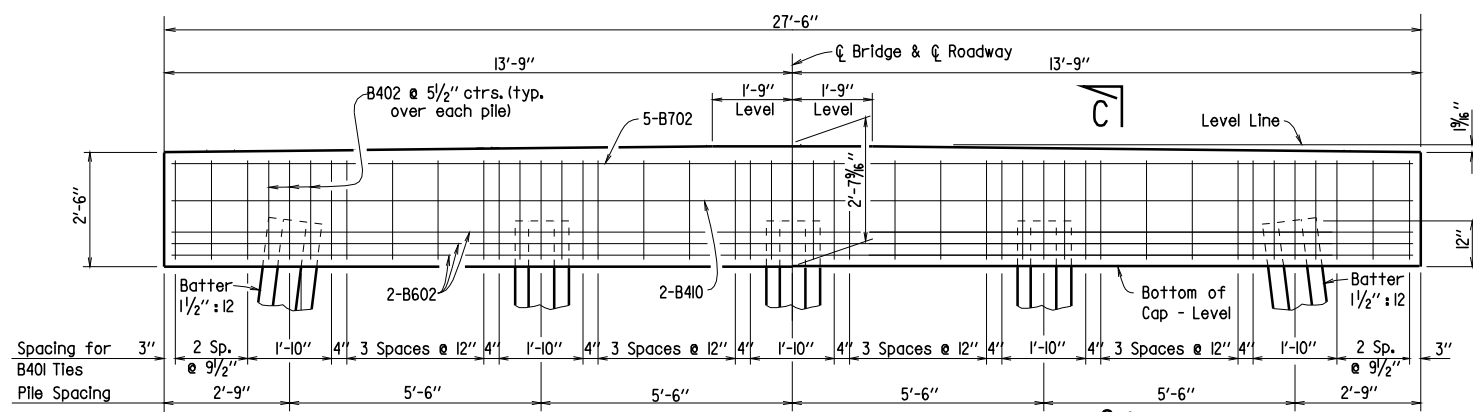
DRAWN BY: A.M.S. DATE: 11-15-00 FILENAME: B15201.STD
 CHECKED BY: J.G.T. DATE: 11-15-00 SCALE: 1/2" = 1'-0"
 DESIGNED BY: STD. DATE: -
 BRIDGE NO. DRAWING NO. 15201



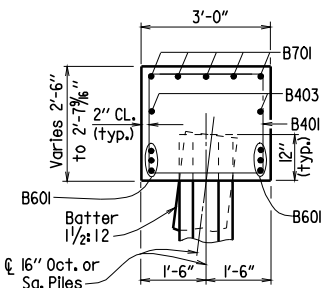
PLAN - END BENT



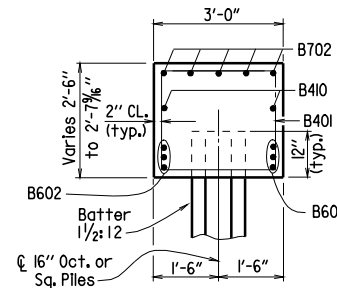
ELEVATION - END BENT



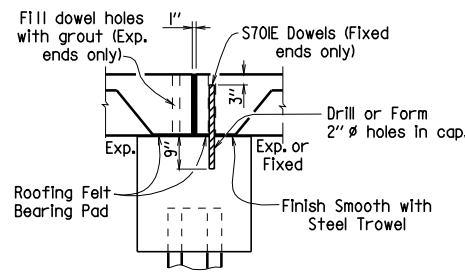
ELEVATION - INTERMEDIATE BENT



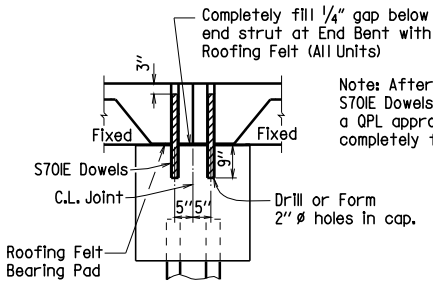
SECTION B-B



SECTION C-C



SECTION AT EXP. JOINT



SECTION AT FIXED BENT

- 1 Revised and redrawn 11-15-00, AMS Chk'd. By: JGT, 11-15-2000
- 2 Revised cap widths 08-23-01, JAC Chk'd. By MJT
- 3 Revised Joint Filler and epoxied S701 bars 11-16-01, JAC Chk'd. By: JGT
- 4 Revised for current specifications and P.E. stamp 10-09-03 MJT Chk'd. By: JGT