

DATE REVISED	DATE FILMED	DATE REVISED	DATE FILMED	FED. ROAD DIST. NO.	STATE	FED. AID PROJ. NO.	SHEET NO.	TOTAL SHEETS
11/16/01				6	ARK.			
10-09-03								

JOB NO. _____ Std. Bents 15202

BAR LIST PER BENT

Note: Bars designated with an "E" are to be epoxy coated.

MARK	NO. REQ'D.		LENGTH	'A'	'B'	P.D.	BENDING DIAGRAMS
	END BT.	INT. BT.					
B401	32	30	9'-4"	2'-4"	2'-2"	2"	
B402	12	12	6'-6"	2'-4"	2'-2"	2"	
B403	2	-	28'-2"	-	-	Str.	
B404	4	-	6'-1"	5'-2"	1'-10"	Str.	
B405	6	-	7'-1"	5'-2"	2'-10"	2"	
B406	4	-	6'-1"	4'-6"	1'-8"	2"	
B407	6	-	7'-1"	4'-6"	3'-6"	2"	
B408	30	-	3'-8"	-	-	Str.	
B409	10	-	3'-3"	1'-8"	1'-8"	2"	
B410	-	2	27'-2"	-	-	Str.	
B601	6	-	28'-2"	-	-	Str.	
B602	-	6	27'-2"	-	-	Str.	
B701	5	-	28'-2"	-	-	Str.	
B702	-	5	27'-2"	-	-	Str.	

* S601E (See Precast Concrete Span Unit S701E Bar List for number required)

* Payment for these bars is included in pay items for Precast Concrete units

General Notes

Design Specifications: AASHTO Standard Specifications for Highway Bridges 2002 edition, and Interim specifications.

Live Load: HS20.

Method of Design: Load Factor

Seismic Performance Category: A

Piling: HP 12X53 piles in end bents shall be driven to a minimum safe bearing capacity of 55 tons. Piling shall be driven after embankment to bottom of cap is in place. HP 12X53 piles in int. bents shall be driven to a minimum safe bearing capacity of 55 tons.

Concrete: All concrete shall be Class "S" and have a minimum 28 day compressive strength $F'_c = 3500$ psi. All exposed corners shall be chamfered $\frac{3}{4}$ " unless otherwise noted.

Reinforcing Steel: Reinforcing steel shall conform to AASHTO M 31 OR M 53, Grade 60.

Roofing Felt shall meet or exceed the requirements of ASTM D224 Type I. See Section 802.18 (d). The roofing felt shall be in one piece for the full length of the cap and three layers shall be used. Roofing Felt shall not be paid for directly, but shall be considered subsidiary to the pay items for Precast Concrete Units.

Preformed Joint Filler shall conform to AASHTO M53, Type I and shall not be paid for directly but shall be considered subsidiary to the pay items for Precast Concrete Units.

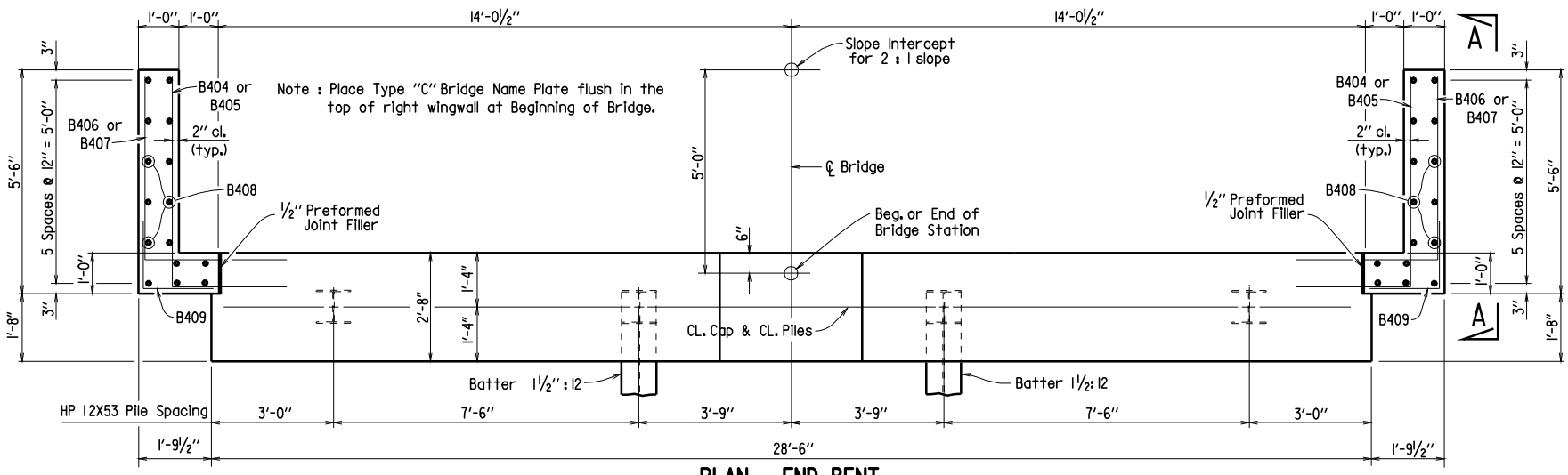
For Details of 19'-0" Precast Spans, See Dwg. No. 15242 & 15230.
 For Details of 25'-0" Precast Spans, See Dwg. No. 15241 & 15230.
 For Details of 31'-0" Precast Spans, See Dwg. No. 15240 & 15230.
 For Details of steel Piles, see Dwg. No. 14995A.

QUANTITIES

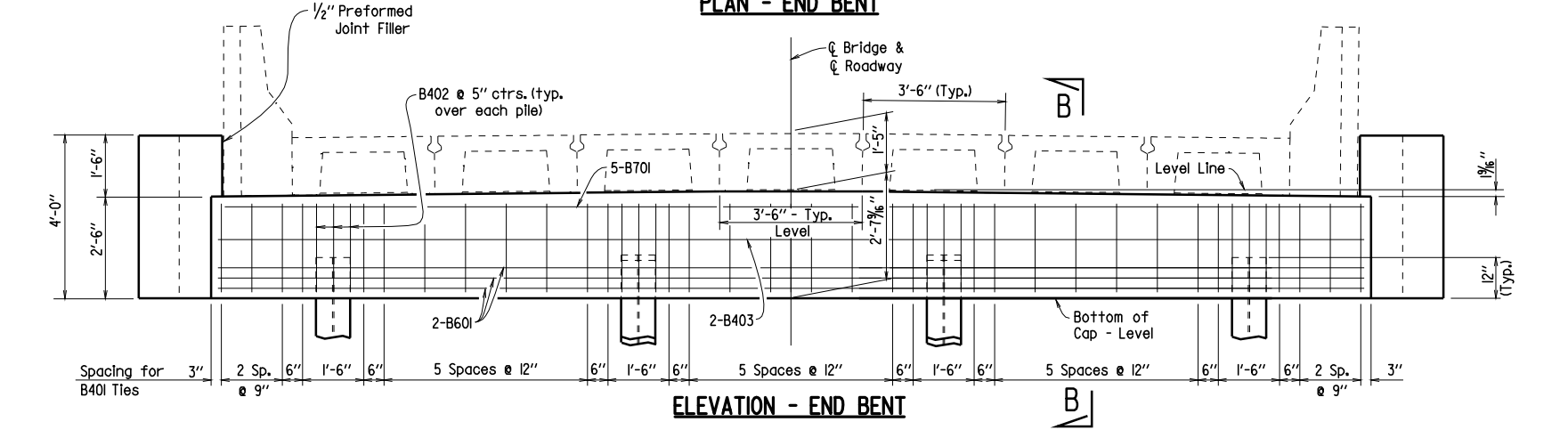
Bent Type	Class "S" Concrete - Bridge	Reinforcing Steel (Gr. 60) - Bridge
End Bt.	9.1 Cu. Yds.	1030 Lbs.
Int. Bt.	7.0 Cu. Yds.	800 Lbs.

DETAILS OF STANDARD PILE BENTS (STEEL H-PILES)
 For 19'-0", 25'-0" & 31'-0"
PRECAST CONCRETE SPANS-24'-6" RDWY.
 ROUTE _____ SEC. _____
ARKANSAS STATE HIGHWAY COMMISSION
 LITTLE ROCK, ARK.

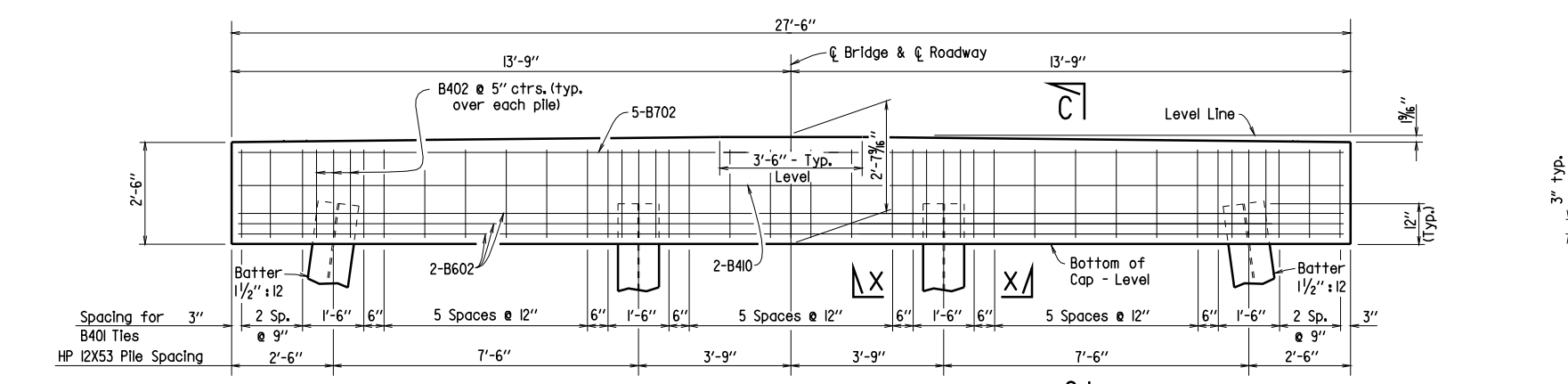
DRAWN BY: JAC DATE: 11-16-2001 FILENAME: B15202.STD
 CHECKED BY: JGT DATE: 11-16-2001 SCALE: $\frac{1}{2}'' = 1'-0''$
 DESIGNED BY: STD. DATE: _____
 BRIDGE NO. _____ DRAWING NO. 15202



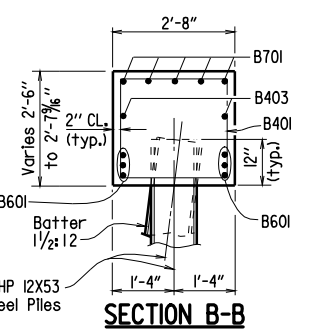
PLAN - END BENT



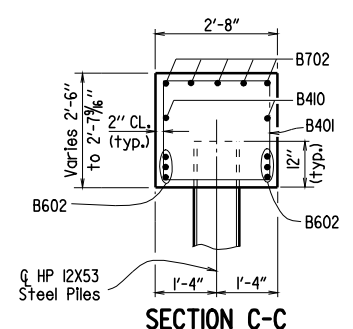
ELEVATION - END BENT



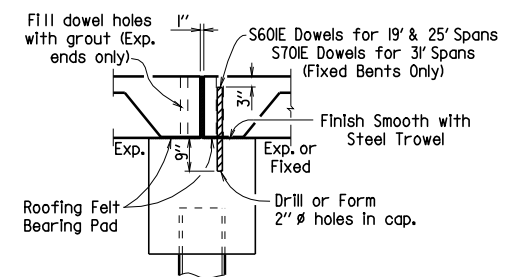
ELEVATION - INTERMEDIATE BENT



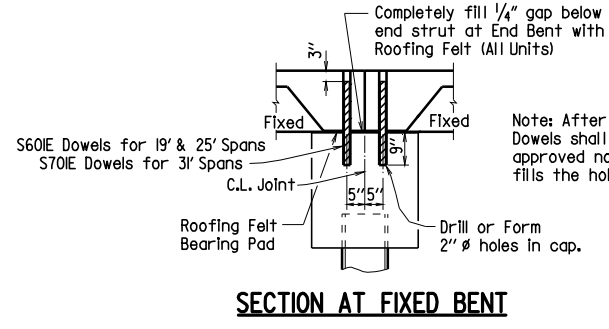
SECTION B-B



SECTION C-C



SECTION AT EXP. JOINT



SECTION AT FIXED BENT

Note: After each unit is in its final position, Dowels shall be grouted in place using a OPL approved non-shrink grout that completely fills the holes.

Redrawn and Revised 11-16-2001, JAC Chk'd. By: JGT
 Revised for current specifications and P.E. stamp 10-09-03 MJT Chk'd. By: JGT