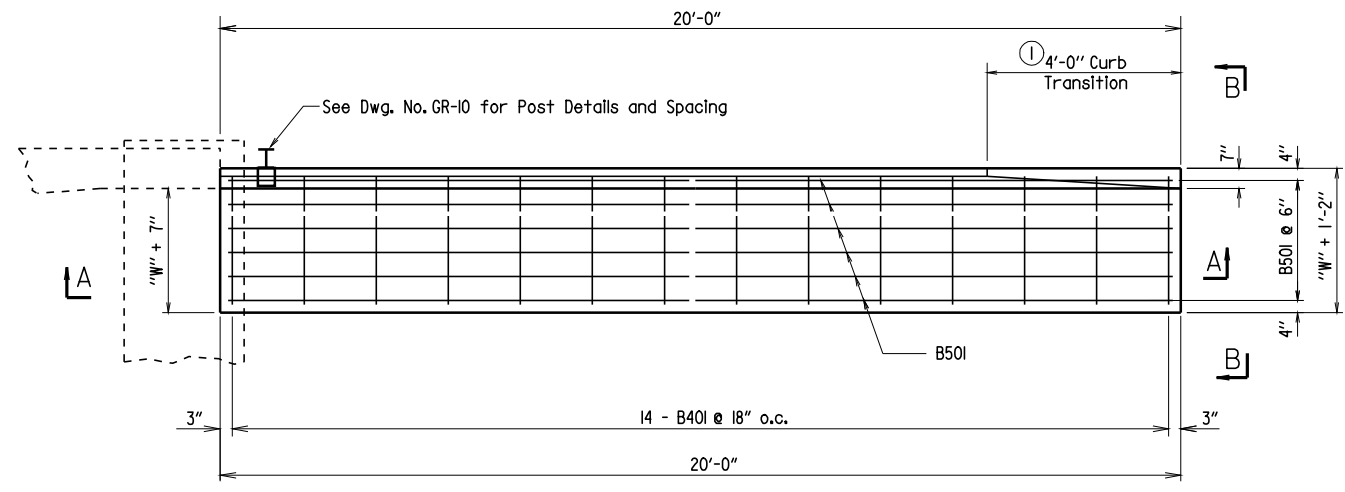
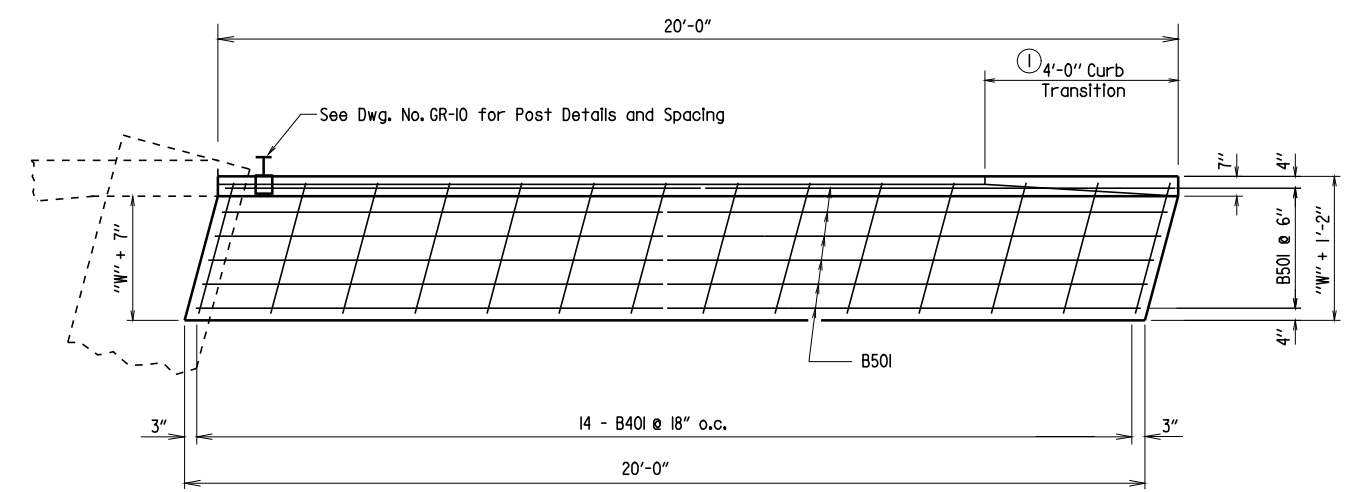


DATE REVISED	DATE FILMED	DATE REVISED	DATE FILMED	FED. ROAD DIST. NO.	STATE	FED. AID PROJ. NO.	SHEET NO.	TOTAL SHEETS
4-10-2003				6	ARK.			
				JOB NO.				

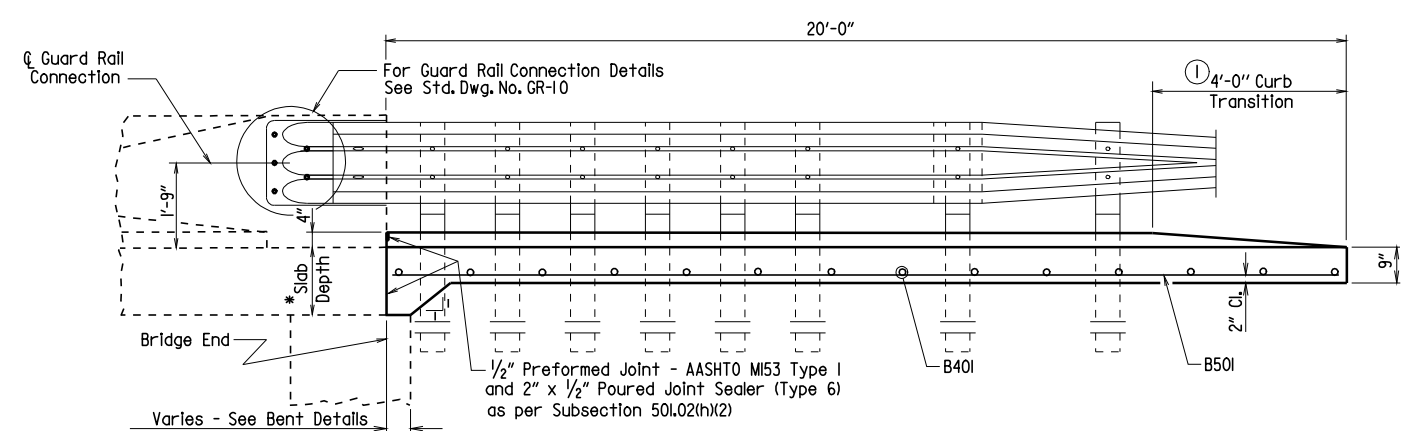
① TYPE F GUTTERS 2016F



**HALF PLAN OF APPROACH GUTTERS FOR SQUARE BRIDGE**



**HALF PLAN OF APPROACH GUTTERS FOR SKEWED BRIDGE**



**SECTION A - A**

**QUANTITIES FOR ONE SQUARE APPROACH GUTTER**

"W" Width (ft.)	Reinforcing Steel (lbs.)	Concrete (cubic yards)
3	200	2.40
4	251	3.00
6	352	4.10
8	452	5.20

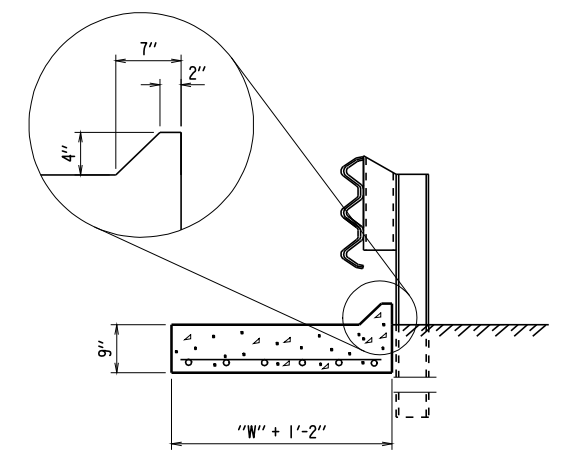
**BAR LIST - ONE SQUARE GUTTER**

Mark	No. Required for Width "W"				Length
	3'-0"	4'-0"	6'-0"	8'-0"	
* B401	14	14	14	14	"W" + 10"
B501	8	10	14	18	19'-8"

\* Bar Lengths vary with Skew, Lengths shown are for Square Bridges.

① Construct gutter curb with height-transition as shown if drop inlet is not placed at end of gutter.

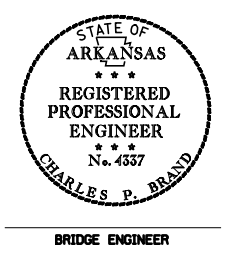
Construct gutter curb full height (no height-transition) if drop inlet is placed at end of gutter. Curb height transition placed on drop inlet. See drop inlet details.



**SECTION B - B**  
No Scale

**GENERAL NOTES**

- Concrete shall be Class S or Class S(AE) or mixture used for Portland Cement Concrete Pavement.
- Reinforcement Steel shall conform to AASHTO M31 or M53, Grade 60 (fy = 60,000 psi).
- Approach Gutters will be measured and paid for in accordance with Section 504 of the Standard Specifications.
- Revised and redrawn 4-10-2003, By KDH Ck. By: CJF 4-10-2003



**DETAILS OF STANDARD TYPE F APPROACH GUTTERS**

ROUTE \_\_\_\_\_ SEC. \_\_\_\_\_  
**ARKANSAS STATE HIGHWAY COMMISSION**  
 LITTLE ROCK, ARK.

DRAWN BY: KDH DATE: 4-10-2003 FILENAME: B2016F.STD  
 CHECKED BY: CJF DATE: 4-10-2003 SCALE: 1/2" = 1'-0" or as shown  
 DESIGNED BY: STD DATE: \_\_\_\_\_  
 BRIDGE NO. \_\_\_\_\_ DRAWING NO. 2016F

\* Slab Depth Varies - See Span and Bent Details