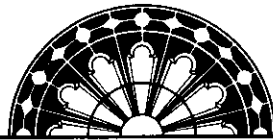


#AD285



ARKANSAS  
HISTORIC  
PRESERVATION  
PROGRAM

April 13, 2000

Carol D. Shull  
Chief of Registration  
United State Department of the Interior  
National Register of Historic Places  
National Park Service  
800 North Capitol Street, Suite 250  
Washington, D.C. 20002

RE: Self Creek Bridge—Daisy vicinity, Pike County

Dear Carol:

We are enclosing for your review the nomination of the above-referenced property. The Arkansas Historic Preservation Program has complied with all applicable nominating procedures and notification requirements in the nomination process.

Thank you for your consideration in this matter.

Sincerely,

Cathy Buford Slater  
State Historic Preservation Officer

CBS:ab

Enclosures

1500 Tower Building • 323 Center • Little Rock, Arkansas 72201 • Phone (501) 324-9880  
Fax (501) 324-9184 • TDD (501) 324-9811  
A Division of the Department of Arkansas Heritage



RECEIVED  
AHT.D.

MAY 02 2000

ENVIRONMENTAL  
DIVISION

United States Department of the Interior  
National Park Service

# National Register of Historic Places Registration Form

This form is for use in nominating or requesting determinations for individual properties and districts. See instructions in *How to Complete the National Register of Historic Places Registration Form* (National Register Bulletin 16A). Complete each item by marking "x" in the appropriate box or by entering the information requested. If an item does not apply to the property being documented, enter "N/A" for "not applicable." For functions, architectural classification, materials, and areas of significance, enter only categories and subcategories from the instructions. Place additional entries and narrative items on continuation sheets (NPS Form 10-900a). Use a typewriter, word processor, or computer, to complete all items.

## 1. Name of Property

historic name Self Creek Bridge

other names/site number (PI0025)

## 2. Location

street & number U.S. Hwy 70, spanning Self Creek and Lake Greeson

not for publication

city or town Daisy

vicinity

state Arkansas

Code AR

county Pike

code 109

zip code 71939

## 3. State/Federal Agency Certification

As the designated authority under the National Historic Preservation Act, as amended, I hereby certify that this  nomination  request for determination of eligibility meets the documentation standards for registering properties in the National Register of Historic Places and meets the procedural and professional requirements set for in 36 CFR Part 60. In my opinion, the property  meets  does not meet the National Register criteria. I recommend that this property be considered significant

nationally  statewide  locally. (See continuation sheet for additional comments.)

Carlynn H. Slaton  
Signature of certifying official/Title

4-27-00  
Date

Arkansas Historic Preservation Program

State or Federal agency and bureau

In my opinion, the property  meets  does not meet the National Register criteria. ( See Continuation sheet for additional comments.)

\_\_\_\_\_  
Signature of certifying official/Title

\_\_\_\_\_  
Date

\_\_\_\_\_  
State or Federal agency and bureau

## 4. National Park Service Certification

I hereby certify that the property is:

entered in the National Register.

See continuation sheet

determined eligible for the National Register.

See continuation sheet

determined not eligible for the National Register.

removed from the National Register.

other, (explain: \_\_\_\_\_  
\_\_\_\_\_  
\_\_\_\_\_

\_\_\_\_\_  
Signature of the Keeper

\_\_\_\_\_  
Date of Action

Self Creek Bridge  
Name of Property

Pike County  
County and State

**5. Classification**

**Ownership of Property**  
(Check as many boxes as apply)

- private
- public-local
- public-State
- public-Federal

**Category of Property**  
(Check only one box)

- building(s)
- district
- site
- structure
- object

**Number of Resources within Property**  
(Do not include previously listed resources in count.)

Contributing	Noncontributing	
		buildings
		sites
1		structures
		objects
1	0	Total

**Name of related multiple property listing**  
(Enter "N/A" if property is not part of a multiple property listing.)

Historic Bridges of Arkansas--Post WWII Era

**Number of Contributing resources previously listed in the National Register**

N/A

**6. Function or Use**

**Historic Functions**  
(Enter categories from instructions)

Transportation/Road-Related

**Current Functions**  
(Enter categories from instructions)

Transportation/Road-Related

**7. Description**

**Architectural Classification**  
(Enter categories from instructions)  
Other: open spandrel deck arch

**Materials**  
(Enter categories from instructions)

Foundation CONCRETE

walls CONCRETE

roof N/A

other

**Narrative Description**

(Describe the historic and current condition of the property on one or more continuation sheets.)

**Description**

Located on State Highway 70 (near the town of Daisy) at the point where it crosses between Self Creek and Lake Greeson, the Self Creek Bridge is of the open spandrel deck arch type. It consists of a total of three reinforced concrete spans, the longest of which is 200 feet. Its total length is 692 feet, its deck width is 25.9 feet and its overall width is 31.6 feet. The abutments, the two piers and the open arches that support the deck are all of reinforced concrete construction, as is the deck with its asphalt surface. A relatively elaborate concrete masonry balustrade runs the full length of each edge of the deck.

8. Statement of Significance

Applicable National Register Criteria

(Mark "x" in one or more boxes for the criteria qualifying the property for National Register listing.)

- A Property is associated with events that have made a significant contribution to the broad patterns of our history.
B Property is associated with the lives of persons significant in our past.
[X] C Property embodies the distinctive characteristics of a type, period, or method of construction or represents the work of a master, or possesses high artistic values, or represents a significant and distinguishable entity whose components lack individual distinction.
D Property has yielded, or is likely to yield, information important in prehistory or history.

Criteria Considerations

(Mark "x" in all the boxes that apply.)

Property is:

- A owned by a religious institution or used for religious purposes.
B removed from its original location.
C moved from its original location.
D a cemetery.
E a reconstructed building, object, or structure.
F a commemorative property
G less than 50 years of age or achieved significance within the past 50 years.

Levels of Significance (local, state, national)

Local

Areas of Significance (Enter categories from instructions)

Engineering

Period of Significance

1949

Significant Dates

1949

Significant Person (Complete if Criterion B is marked)

N/A

Cultural Affiliation (Complete if Criterion D is marked)

N/A

Architect/Builder

Arkansas Highway and Transportation--Architect
D. F. Jones Construction, Little Rock--Builder

Narrative Statement of Significance

(Explain the significance of the property on one or more continuation sheets.)

Significance

Constructed in 1949, the Self Creek Bridge is associated with the Post World War II Era historic context and is of the open spandrel deck arch type. The D.F. Jones Construction Company of Little Rock in conjunction with the Arkansas State Highway Commission erected the bridge for a cost of \$287,624.77. Given its intact condition it retains sufficient integrity to remain associated with its historic period; it is thus locally eligible under Criterion C.

Historic Background

The Lake Greeson (Narrows Dam and Reservoir) project was authorized by the Flood Control act of 1941 as amended in 1944. Construction of the Dam was completed in 1950 with the Self Creek Bridge being completed the year before. Flood control and hydroelectric power were the authorized purposes of the project, though recreational fishing and

boating are two of the tourist attractions the man-made lake now provides. A total of 15,953 acres were acquired for the project. Approximately 111 acres were sold for private home sites. The dam and lake were the result of the efforts of Martin White Greeson for whom the lake was renamed around 1976. Until that time the lake was known as Narrows Lake for the dam that formed it.

---

## 9. Major Bibliographical References

---

### Bibliography

(Cite the books, articles, and other sources used in preparing this form on one or more continuation sheets.)

Arkansas State Highway and Transportation Department. "OASIS INQUIRY—Structure Number A0285." (database), 2000.

"Lake Greeson Field Office Report," August 1985.

Murfreesboro Diamond, 15 July 1976.

#### Previous documentation on file (NPS):

- preliminary determination of individual listing (36 CFR 67) has been requested
- previously listed in the National Register
- Previously determined eligible by the National Register
- designated a National Historic Landmark
- recorded by Historic American Buildings Survey # \_\_\_\_\_
- recorded by Historic American Engineering Record # \_\_\_\_\_

#### Primary location of additional data:

- State Historic Preservation Office
- Other State Agency
- Federal Agency
- Local Government
- University
- Other

Name of repository: \_\_\_\_\_

Self Creek Bridge  
Name of Property

Pike County, Arkansas  
County and State

**10. Geographical Data**

Acreeage of Property Less than one

**UTM References**

(Place additional UTM references on a continuation sheet.)

1	<u>15</u>	<u>430320</u>	<u>3788440</u>
	Zone	Easting	Northing
2	<u>          </u>	<u>          </u>	<u>          </u>

3	<u>          </u>	<u>          </u>	<u>          </u>
	Zone	Easting	Northing
4	<u>          </u>	<u>          </u>	<u>          </u>

See continuation sheet

**Verbal Boundary Description**

(Describe the boundaries of the property on a continuation sheet.)

Beginning at a point formed by the intersection of the northern edge of State Highway 70 with a perpendicular line running parallel with the western end of the bridge, proceed northerly for a distance of approximately 10 feet to it's intersection with a perpendicular line running parallel with the bridge's northern side; then proceed easterly along said line for a distance of approximately 692 feet to its intersection with a perpendicular running along the eastern end of the bridge, thence proceed southerly approximately 60 feet along said line to its intersection with with a perpendicular line that runs parallel to the bridge's southern side; then proceed westerly along said line for a distance of approximately 692 feet to its intersection with a perpendicular line; thence proceed northerly to the point of beginning.

**Boundary Justification**

(Explain why the boundaries were selected on a continuation sheet.)

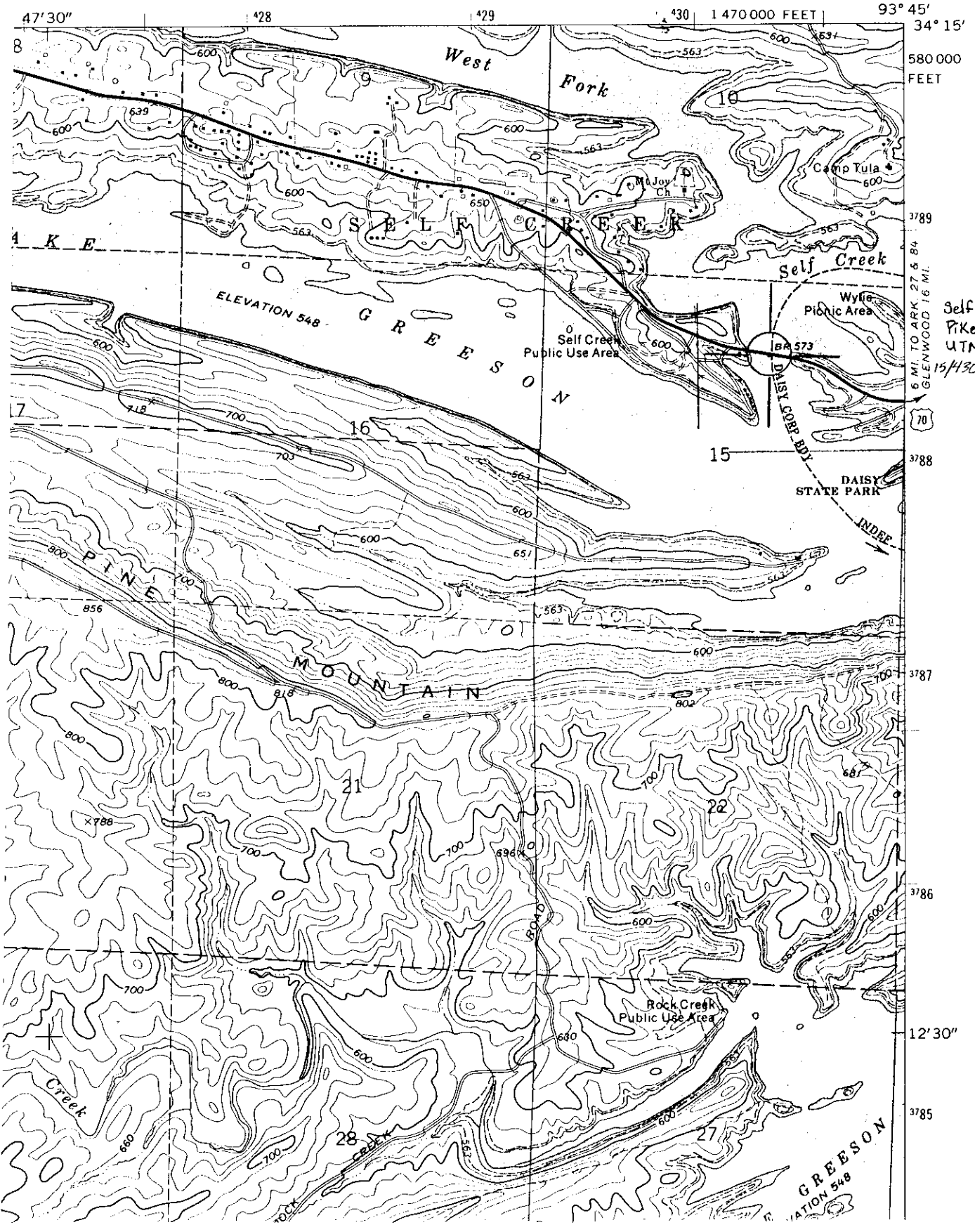
This boundary contains the bridge, piers, and abutments, all of which are historically associated with this resource.

**11. Form Prepared By**

name/title	<u>Amy Bennett/Survey Historian</u>
organization	<u>Arkansas Historic Preservation Program</u>
date	<u>March 20, 2000</u>
street & number	<u>1500 Tower Building, 323 Center Street</u>
telephone	<u>(501) 324-9880</u>
city or town	<u>Little Rock</u>
State	<u>AR</u>
zip code	<u>72201</u>

CENTER POINT NE QUADRANGLE  
 ARKANSAS  
 7.5 MINUTE SERIES (TOPOGRAPHIC)

72521  
 (GLENWOOD 1:62 500)



Self Creek Bridge  
 Pike Co., Arkansas  
 UTM Reference:  
 15H30320/3788440

6 MI. TO ARK 27 & 84  
 GLENWOOD 16 MI.

70

DAISY STATE PARK

INDEF

3789

3788

3787

3786

3785

3786

3787

3788

3789

3790

3791

3792