

ARKANSAS
HISTORIC
PRESERVATION
PROGRAM

April 21, 2000

Carol D. Shull
Chief of Registration
United State Department of the Interior
National Register of Historic Places
National Park Service
800 North Capitol Street, Suite 250
Washington, D.C. 20002

RE: Big Slough Ditch Bridge – Brighton vic., Greene County

Dear Carol:

We are enclosing for your review the nomination of the above-referenced property. The Arkansas Historic Preservation Program has complied with all applicable nominating procedures and notification requirements in the nomination process.

Thank you for your consideration in this matter.

Sincerely,

Cathy Buford Slater
State Historic Preservation Officer

CBS:km

Enclosures

RECEIVED
A.H.T.D.

MAY 02 2000

ENVIRONMENTAL
DIVISION



United States Department of the Interior
National Park Service

National Register of Historic Places Registration Form

This form is for use in nominating or requesting determinations for individual properties and districts. See instructions in *How to Complete the National Register of Historic Places Registration Form* (National Register Bulletin 16A). Complete each item by marking "x" in the appropriate box or by entering the information requested. If an item does not apply to the property being documented, enter "N/A" for "not applicable." For functions, architectural classification, materials, and areas of significance, enter only categories and subcategories from the instructions. Place additional entries and narrative items on continuation sheets (NPS Form 10-900a). Use a typewriter, word processor, or computer, to complete all items.

1. Name of Property

historic name Big Slough Ditch Bridge
other names/site number GE0061, County Road 35 Bridge

2. Location

street & number County Road 855 not for publication
city or town Brighton vicinity
state Arkansas code AR county Greene code 055 zip code 71923

3. State/Federal Agency Certification

As the designated authority under the National Historic Preservation Act, as amended, I hereby certify that this nomination
request for determination of eligibility meets the documentation standards for registering properties in the National Register of Historic
Places and meets the procedural and professional requirements set for in 36 CFR Part 60. In my opinion, the property meets
does not meet the National Register criteria. I recommend that this property be considered significant.

nationally statewide locally. (See continuation sheet for additional comments.)

Catherine H. Slaty 4-27-00
Signature of certifying official/Title Date
Arkansas Historic Preservation Program
State or Federal agency and bureau

In my opinion, the property meets does not meet the National Register criteria. (See Continuation sheet for additional
comments.)

Signature of certifying official/Title Date

State or Federal agency and bureau

4. National Park Service Certification

<p>I hereby certify that the property is:</p> <p><input type="checkbox"/> entered in the National Register. <input type="checkbox"/> See continuation sheet</p> <p><input type="checkbox"/> determined eligible for the National Register. <input type="checkbox"/> See continuation sheet</p> <p><input type="checkbox"/> determined not eligible for the National Register.</p> <p><input type="checkbox"/> removed from the National Register.</p> <p><input type="checkbox"/> other, (explain.) _____ _____ _____</p>	<p>Signature of the Keeper</p> <p>_____</p> <p>_____</p> <p>_____</p> <p>_____</p>	<p>Date of Action</p> <p>_____</p> <p>_____</p> <p>_____</p> <p>_____</p>
-------------------------------------------------------------------------------------------------------------------------------------------------------------------------------------------------------------------------------------------------------------------------------------------------------------------------------------------------------------------------------------------------------------------------------------------------------------------------------------------------------------------------------------------------------	------------------------------------------------------------------------------------	---------------------------------------------------------------------------

Big Slough Ditch Bridge

Name of Property

Greene Co., Arkansas

County and State

5. Classification

Ownership of Property (Check as many boxes as apply)

Category of Property (Check only one box)

Number of Resources within Property (Do not include previously listed resources in count.)

- private, public-local, public-State, public-Federal

- building(s), district, site, structure, object

Contributing Noncontributing

Table with 2 columns: Contributing, Noncontributing and 4 rows: buildings, sites, structures, objects, Total

Name of related multiple property listing (Enter "N/A" if property is not part of a multiple property listing.)

Historic Bridges of Arkansas

Number of Contributing resources previously listed in the National Register

N/A

6. Function or Use

Historic Functions (Enter categories from instructions)

TRANSPORTATION: Road Related (vehicular)

Current Functions (Enter categories from instructions)

TRANSPORTATION: Road Related (vehicular)

7. Description

Architectural Classification (Enter categories from instructions)

OTHER: Warren truss, deck truss bridge

Materials (Enter categories from instructions)

Table with 2 columns: Material Name, Material Type. Rows: foundation (Wood), walls (Steel), roof (N/A), other (Wood, Concrete)

Narrative Description

(Describe the historic and current condition of the property)

SEE CONTINUATION SHEET.

Big Slough Ditch Bridge
Name of Property

Greene Co., Arkansas
County and State

8. Statement of Significance

Applicable National Register Criteria
(Mark "x" in one or more boxes for the criteria qualifying the property for National Register listing.)

- A** Property is associated with events that have made a significant contribution to the broad patterns of our history.
- B** Property is associated with the lives of persons significant in our past.
- C** Property embodies the distinctive characteristics of a type, period, or method of construction or high artistic values, or represents a significant and distinguishable entity whose components lack individual distinction.
- D** Property has yielded, or is likely to yield, information important in prehistory or history.

Criteria Considerations
(Mark "x" in all the boxes that apply.)

Property is:

- A** owned by a religious institution or used for religious purposes.
- B** removed from its original location.
- C** moved from its original location.
- D** a cemetery.
- E** a reconstructed building, object, or structure.
- F** a commemorative property
- G** less than 50 years of age or achieved significance within the past 50 years.

Narrative Statement of Significance
(Explain the significance of the property)

SEE CONTINUATION SHEET.

Levels of Significance (local, state, national)
LOCAL

Areas of Significance (Enter categories from instructions)
ENGINEERING

Period of Significance
1947-1950

Significant Dates
1947

Significant Person (Complete if Criterion B is marked)

N/A

Cultural Affiliation
N/A

Architect/Builder
BUILDER: Pioneer Construction Co., Inc.

9. Major Bibliographical References

Bibliography

Arkansas State Highway and Transportation Department (Environmental Division). *Arkansas Historic Bridge Review and Evaluation: Volume I(December 1987) and Volume II (April 1996)*. Little Rock, AR: no publisher.

Arkansas Highway Department. "OASIS INQUIRY – Bridge 13376." (database), 2000.

Arkansas Historic Preservation Program. "Bridges to the Past." (brochure), 1999.

Comp, Allan, and Donald Jackson. "Technical Leaflet 95: Bridge Truss Types: A Guide to Dating and Identifying." American Association for State and Local History, 1977.

Baker, J.C. To W. W. Zass. 20 June 1947. Letter in possession of the Arkansas Highway Department (Record Room – Job 10316).

Memo. 25 September 1947. Memo in possession of the Arkansas Highway Department (Record Room – Job 10316).

Zaas, W. W. To F. R. Oliver. 15 July 1947. Letter in possession of the Arkansas Highway Department (Record Room – Job 10311).

Previous documentation on file (NPS):

- preliminary determination of individual listing (36 CFR 67) has been requested
- previously listed in the National Register
- Previously determined eligible by the National Register
- designated a National Historic Landmark
- recorded by Historic American Buildings Survey # _____
- recorded by Historic American Engineering Record # _____

Primary location of additional data:

- State Historic Preservation Office
- Other State Agency
- Federal Agency
- Local Government
- University
- Other

Name of repository: _____

10. Geographical Data

Acreage of Property Less than one acre

UTM References

(Place additional UTM references on a continuation sheet.)

1 15 737680 3994575
 Zone Easting Northing

2 _____

3 _____
 Zone Easting Northing

4 _____

See continuation sheet

Big Slough Ditch Bridge

Name of Property

Greene Co., Arkansas

County and State

Verbal Boundary Description

(Describe the boundaries of the property)

Section – 29, Township – 17N, Range – 06 E

Beginning at a point 30 feet east and 30 feet north of the northeast corner of the bridge proceed south approximately 72.5 feet crossing County Road 855 (at this point you will be approximately 30 feet south and 30 feet east from the southeast corner of the bridge). Turning west, proceed approximately 313 feet, running parallel to the south side of the bridge, while crossing the Big Slough Ditch. Turning north proceed approximately 72.5 feet crossing County Road 855 to a point approximately 30 feet west and north of the northwest corner of the bridge. Turning east proceed approximately 313 feet, running parallel to the north side of the bridge, while crossing the Big Slough Ditch and returning to the point of origin.

Boundary Justification

(Explain why the boundaries were selected)

This boundary has been established to isolate the bridge, abutments, and piers, all of which are historically associated with this resource and maintain their integrity. Also included in the boundary is the immediate setting extending 30 feet north, south, east, and west of the body of the bridge.

11. Form Prepared By

name/title Kara Mills, National Register/Survey Coordinator

organization Arkansas Historic Preservation Program

date April 1, 2000

street & number 1500 Tower Building, 323 Center Street

telephone (501) 324-9880

city or town Little Rock

state Arkansas

zip code 71923

Paperwork Reduction Act Statement: This information is being collected for applications to the National Register of Historic Places to nominate properties for listing or determine eligibility for listing, to list properties, and to amend existing listing. Response to this request is required to obtain a benefit in accordance with the National Historic Preservation Act, as amended (16 U.S.C. 470 *et seq.*)

Estimated Burden Statement: Public reporting burden for this form is estimated to average 18.1 hours per response including time for reviewing instructions, gathering and maintaining data, and completing and reviewing the form. Direct comments regarding this burden estimate or any aspect of this form to the Chief, Administrative Services Division, National Park Service, P. O. Box 37127, Washington, DC 20013-7127; and the Office of Management and Budget, Paperwork Reductions Projects (1024-0018), Washington, DC 20303.

United States Department of the Interior
National Park Service

National Register of Historic Places Continuation Sheet

Section number 7 Page 1

SUMMARY

The Big Slough Bridge is located at the crossing of Big Slough Ditch at approximately .3 miles west of the junction of County Roads 855 and 838. Comprised of three spans measuring up to 84 feet each, this steel, Warren truss with verticals, deck truss bridge spans a total of 253 feet. The Big Slough Bridge is being nominated to the National Register of Historic Places under Criterion C for its distinctive type and method of construction.

ELABORATION

The steel, Warren truss with verticals, deck truss bridge is accessed from both the east and west ends by a dirt road. Because it is a deck truss, this bridge carries its traffic load level with the top chords. The Big Slough Ditch Bridge consists of three spans, each measuring approximately 84 feet, with a total structure length of 253 feet. The travel surface is 11 feet wide with an overall width of 24 feet. This county bridge differs from the highway bridges in that its deck surface is timber laid over the steel truss. The piers are of timber and a pair of steel Warren trusses with verticals run the entire length of the bridge on the north and south sides underneath the decking. The bridge is very narrow and displays a lack of railing. The Warren truss with verticals is designed to allow the diagonals to carry both compressive and tensile forces, with the verticals serving as bracing for the triangular web system.

Integrity

No structural alterations have been made to the bridge to alter its integrity. Its location remains rural, as its setting remains pristine; it exemplifies its original historic design and materials. No changes have been made to alter the historic workmanship or detract from its feeling or association as it is still used as a bridge for vehicular travel.

United States Department of the Interior
National Park Service

National Register of Historic Places Continuation Sheet

Section number 8 Page 1

SUMMARY

Constructed in 1947, the Big Slough Bridge is being nominated to the National Register of Historic Places under Criterion C because it embodies the distinctive characteristics of a Warren truss with verticals, deck-truss bridge and is the best example of this design in the surrounding area. This bridge is significant in the area of engineering and is being submitted under the multiple property listing "**Historic Bridges of Arkansas**" and under the associated historic context "**Post WWII Era.**"

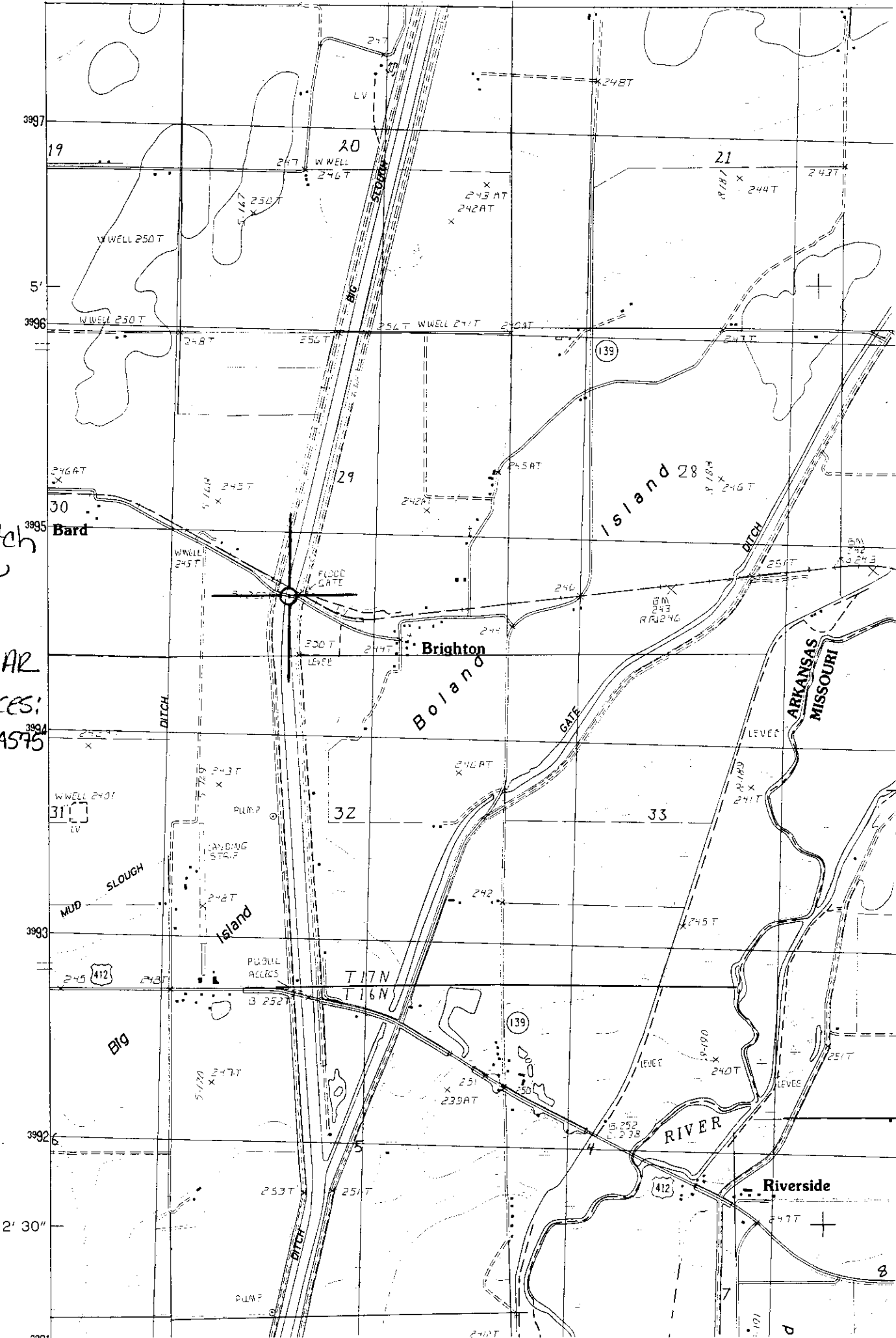
ELABORATION

According to Allan Comp, Senior Historian, and Donald Jackson, Civil Engineer (HAER), the Warren truss design dates back to the 1840s. During the late part of the nineteenth century different styles of trusses were developed but it was the Pratt and the Warren designs that gradually demonstrated their versatility, durability, and economic desirability. Because of the success of both bridge designs, nearly all bridge trusses in the twentieth century were constructed using variations of these forms, and so the Big Slough Bridge was constructed in a variation of the Warren design – the Warren truss with verticals.

The present Big Slough Bridge was constructed to replace an earlier pony-truss bridge that spanned Big Slough Ditch. No longer adequate to meet the vehicular demands of this region, the bridge was destroyed and no materials were used on the new bridge. Ads were placed in the *Arkansas Gazette*, *Arkansas Democrat*, and *The Construction Crew* to notify contractors that proposals for constructing the Big Slough Bridge were being received by the State Highway Commission. The bid for construction of the bridge was awarded to the Pioneer Construction Co., Inc. of Malvern, Arkansas. The construction of the Big Slough Bridge completed the work contemplated under Item No. 12 of the 1947 Federal-aid primary program as approved 18 September 1946. The total estimated cost for the building of this bridge was \$132,710.00.

Significance

Because it is the best example of the Warren truss design in this area, the Big Slough Bridge is being nominated to the National Register of Historic Places with local **significance** under **Criterion C**. This bridge is significant in the area of engineering and is being submitted under the **multiple property listing** "**Historic Bridges of Arkansas**" in conjunction with the **historic context** "**Post WWII Era.**"



Slough Ditch
 Bridge
 Brighton vic.,
 Greene Co., AR
 U References:
 737680/3994575