

United States Department of the Interior
National Park Service

National Register of Historic Places Registration Form

This form is for use in nominating or requesting determinations of eligibility for individual properties or districts. See instructions in *Guidelines for Completing National Register Forms* (National Register Bulletin 16). Complete each item by marking "x" in the appropriate box or by entering the requested information. If an item does not apply to the property being documented, enter "N/A" for "not applicable." For functions, styles, materials, and areas of significance, enter only the categories and subcategories listed in the instructions. For additional space use continuation sheets (Form 10-900a). Type all entries.

1. Name of Property

historic name Eight Mile Creek Bridge

other names/site number HAER No. AR-17

2. Location

street & number State Highway 135, spanning Eight Mile Creek not for publication N/A

city, town Paragould vicinity N/A

state Arkansas code 05 county Greene code 055 zip code 72450

3. Classification

Ownership of Property

- private
- public-local
- public-State
- public-Federal

Category of Property

- building(s)
- district
- site
- structure
- object

Number of Resources within Property

Contributing	Noncontributing
_____	_____ buildings
_____	_____ sites
<u>1</u>	_____ structures
_____	_____ objects
<u>1</u>	_____ Total

Name of related multiple property listing:

Historic Bridges of Arkansas

Number of contributing resources previously listed in the National Register N/A

4. State/Federal Agency Certification

As the designated authority under the National Historic Preservation Act of 1966, as amended, I hereby certify that this nomination request for determination of eligibility meets the documentation standards for registering properties in the National Register of Historic Places and meets the procedural and professional requirements set forth in 36 CFR Part 60. In my opinion, the property meets does not meet the National Register criteria. See continuation sheet.

Signature of certifying official

Date

Arkansas Historic Preservation Program

State or Federal agency and bureau

In my opinion, the property meets does not meet the National Register criteria. See continuation sheet.

Signature of commenting or other official

Date

State or Federal agency and bureau

5. National Park Service Certification

I, hereby, certify that this property is:

entered in the National Register.

See continuation sheet.

determined eligible for the National Register. See continuation sheet.

determined not eligible for the National Register.

removed from the National Register.

other, (explain:)

Signature of the Keeper

Date of Action

6. Function or Use

Historic Functions (enter categories from instructions)

Transportation/Road-Related

Current Functions (enter categories from instructions)

Transportation/Road-Related

7. Description

Architectural Classification
(enter categories from instructions)

Other: Pratt pony-truss

Materials (enter categories from instructions)

foundation concrete
walls steel

roof _____
other _____

Describe present and historic physical appearance.

**United States Department of the Interior
National Park Service**

**National Register of Historic Places
Continuation Sheet**

Section number 7 Page 1

The Eight Mile Creek Bridge is a single span, Pratt pony-truss bridge that has a total length of 132 feet. Two 30-foot approach spans, one on either end of the bridge, are reinforced-concrete girders. The top chord of the main span is fabricated from channels, flanges turned outward, with a continuous top plate and bottom lattice. The bottom chord contains two channels, flanges turned outward, connected by batten plates. All verticals, diagonals, floor beams, and bottom laterals are either channels or angles. Web members are connected to plates with 3/4-inch rivets. The truss height is 8'8" from the center of the bottom-chord. The bridge has a 20-foot clear roadway.

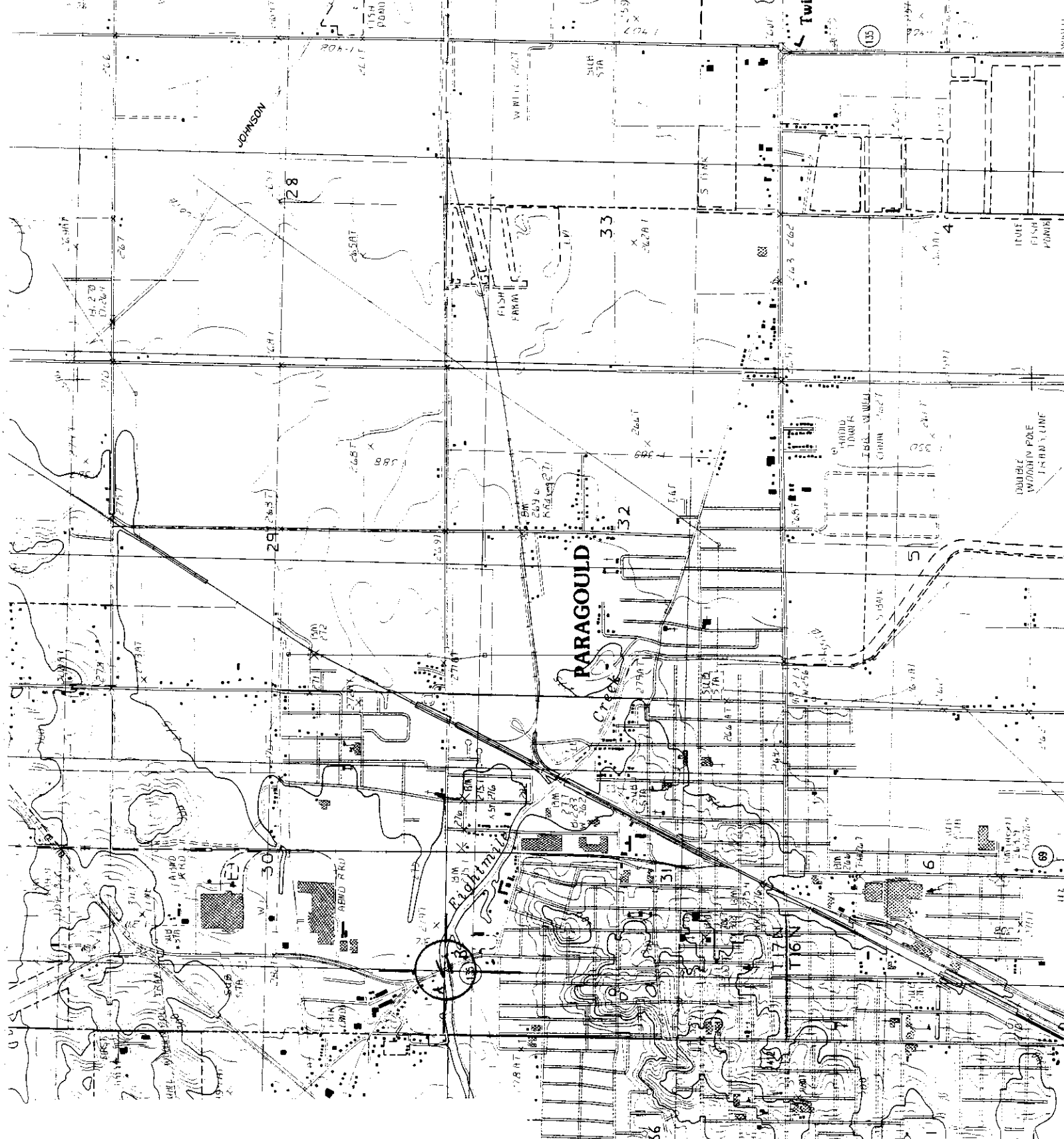
This bridge is in good condition and is currently being maintained by the Arkansas Highway and Transportation Department.

**United States Department of the Interior
National Park Service**

**National Register of Historic Places
Continuation Sheet**

Section number 8 Page 1

The Eight-Mile Creek Bridge is an excellent example of a single-span, Pratt pony-truss bridge. Historically, this type of bridge design was very common in Arkansas, and with this example, represents the advancements in steel-truss design made by the Arkansas Highway and Transportation Department (AHTD) by the late 1920s. Designed under the general supervision of AHTD Bridge Engineer, C.S. Christian and constructed in 1929 by Miller's Garage & Construction Company of St. Louis, Missouri, this bridge was built during the Arkansas Highway and Transportation Department Era: 1923-1939. It was constructed as part of a major bridge improvement project that included 16 bridges on the Paragould-Corning Road in Greene County, beginning in Paragould and extending 13 miles north to the Clay County line. As such, it is nominated under Criteria A and C with statewide significance.



Eight Mile Creek Bridge
 Paragould, Arkansas
 Greene County
 A) 15/726000/3994150
 B) 15/726020/3994105
 Paragould East Quadrangle
 1:24,000

8. Statement of Significance

Certifying official has considered the significance of this property in relation to other properties:

nationally statewide locally

Applicable National Register Criteria A B C D

Criteria Considerations (Exceptions) A B C D E F G

Areas of Significance (enter categories from instructions)

Transportation
Engineering

Period of Significance

1929-1939

Significant Dates

1929

Cultural Affiliation

N/A

Significant Person

N/A

Architect/Builder

Architect: Arkansas Highway & Transportation
Builder: Miller's Garage & Construction Co.

State significance of property, and justify criteria, criteria considerations, and areas and periods of significance noted above.

See continuation sheet

9. Major Bibliographical References

See Historic Bridges of Arkansas, Multiple Property Nomination, Section H.

Previous documentation on file (NPS):

- preliminary determination of individual listing (36 CFR 67) has been requested
- previously listed in the National Register
- previously determined eligible by the National Register
- designated a National Historic Landmark
- recorded by Historic American Buildings Survey # _____
- recorded by Historic American Engineering Record # HAER No. AR-17

See continuation sheet

Primary location of additional data:

- State historic preservation office
- Other State agency
- Federal agency
- Local government
- University
- Other

Specify repository:

U.S. Library of Congress

10. Geographical Data

Acreeage of property Less than one acre

UTM References

A

1	5
---	---

7	2	6	0	0	0
---	---	---	---	---	---

3	9	9	4	1	5	0
---	---	---	---	---	---	---

Zone Easting Northing

C

--	--

--	--	--	--	--	--

--	--	--	--	--	--	--

B

1	5
---	---

7	2	6	0	2	0
---	---	---	---	---	---

3	9	9	4	1	0	5
---	---	---	---	---	---	---

Zone Easting Northing

D

--	--

--	--	--	--	--	--

--	--	--	--	--	--	--

See continuation sheet

Verbal Boundary Description

Beginning at a point approximately 2,800 feet east of the intersection of State Highways 135 and 49, the boundary of the Eight Mile Creek Bridge starts here at the north abutment, then continues south across Eight Mile Creek for approximately 132 feet, where it terminates at the south abutment.

See continuation sheet

Boundary Justification

The boundary includes the main span, approach spans, piers and abutments that are historically associated with this property.

See continuation sheet

11. Form Prepared By

name/title Michael Swanda, Survey Coordinator
organization Arkansas Historic Preservation Program date February 5, 1990
street & number 225 East Markham Street telephone (501) 371-2763
city or town Little Rock state Arkansas zip code 72201