

NR LISTED

United States Department of the Interior
National Park Service

MAY 26 1995

NATIONAL REGISTER OF HISTORIC PLACES
REGISTRATION FORM

AHPP

1. Name of Property

historic name: Fourche LaFave River Bridge

other name/site number: PE0064

2. Location

street & number: State Highway 7 at crossing of Fourche LaFave River

not for publication: N/A

city/town: Nimrod

vicinity: X

state: AR county: Perry code: AR 105 zip code: 72126

3. Classification

Ownership of Property: Public-state

Category of Property: Structure

Number of Resources within Property:

Contributing	Noncontributing	
_____	_____	buildings
_____	_____	sites
<u>1</u>	_____	structures
_____	_____	objects
<u>1</u>	<u>0</u>	Total

Number of contributing resources previously listed in the National Register: N/A

Name of related multiple property listing: Historic Bridges of Arkansas

=====
4. State/Federal Agency Certification
=====

As the designated authority under the National Historic Preservation Act of 1986, as amended, I hereby certify that this X nomination _____ request for determination of eligibility meets the documentation standards for registering properties in the National Register of Historic Places and meets the procedural and professional requirements set forth in 36 CFR Part 60. In my opinion, the property X meets _____ does not meet the National Register Criteria. _____ See continuation sheet.

Cathryn A. Slatu _____ 4-11-95
Signature of certifying official Date

Arkansas Historic Preservation Program
State or Federal agency and bureau

In my opinion, the property _____ meets _____ does not meet the National Register criteria. _____ See continuation sheet.

Signature of commenting or other official Date

State or Federal agency and bureau

=====
5. National Park Service Certification
=====

I, hereby certify that this property is:

- _____ entered in the National Register _____
_____ See continuation sheet.
- _____ determined eligible for the _____
National Register _____
- _____ See continuation sheet.
- _____ determined not eligible for the _____
National Register _____
- _____ removed from the National Register _____
- _____ other (explain): _____

Signature of Keeper Date
of Action

=====
6. Function or Use
=====

Historic: TRANSPORTATION Sub: Road-related

Current: TRANSPORTATION Sub: Road-related

=====
9. Major Bibliographical References
=====

See "Historic Bridges of Arkansas" MPS Nomination, Section H.

___ See continuation sheet.

Previous documentation on file (NPS):

- preliminary determination of individual listing (36 CFR 67) has been requested.
- previously listed in the National Register
- previously determined eligible by the National Register
- designated a National Historic Landmark
- recorded by Historic American Buildings Survey # _____
- recorded by Historic American Engineering Record # _____

Primary Location of Additional Data:

- X State historic preservation office
- Other state agency
- Federal agency
- Local government
- University
- Other -- Specify Repository: _____

=====
10. Geographical Data
=====

Acreeage of Property: Less than one

Table with 6 columns: UTM References, Zone, Easting, Northing, Zone, Easting, Northing. Rows A, B, C, D.

___ See continuation sheet.

Verbal Boundary Description: ___ See continuation sheet.

Beginning at a point formed by the intersection of the southwestern edge of State Highway 7 with a perpendicular line running parallel with the northwestern end of the bridge and located approximately 25 feet to the northwest thereof, proceed southwesterly for a distance of approximately 25 feet to its intersection with a perpendicular line running parallel with the bridge's southwestern side; thence proceed southeasterly along said line for a distance of approximately 568 feet to its intersection with a perpendicular line; thence proceed northeasterly along said line for a distance of approximately 81.5 feet to its intersection with a perpendicular line; thence proceed northwesterly along said line for a distance of approximately 568 feet to its intersection with a perpendicular line; thence proceed southwesterly to the point of beginning.

Boundary Justification: ___ See continuation sheet.

This boundary includes all the property historically associated with this resource.

=====
11. Form Prepared By
=====

Name/Title: Ken Story, National Register/Survey Coordinator
Organization: Arkansas Historic Preservation Program Date: 04/04/95
Street & Number: 323 Center Street, Suite 1500 Telephone: (501) 324-9880
City or Town: Little Rock State: AR Zip: 72201

United States Department of the Interior
National Park Service

National Register of Historic Places Continuation Sheet

Section number 7 Page 1

Description

Located on State Highway 7 at the point where it crosses the Fourche LaFave River, the Fourche LaFave River Bridge is of the open spandrel concrete masonry arch type. It consists of a total of three spans, the longest of which measures 184 feet. Its total length is 518 feet, its deck width is 26 feet and its overall width is 31.5 feet. The abutments, the two piers and the open arches that support the deck are all of reinforced concrete construction, as is the deck with its asphalt surface. A relatively elaborate concrete masonry balustrade runs the full length of each edge of the deck.

United States Department of the Interior
National Park Service

National Register of Historic Places Continuation Sheet

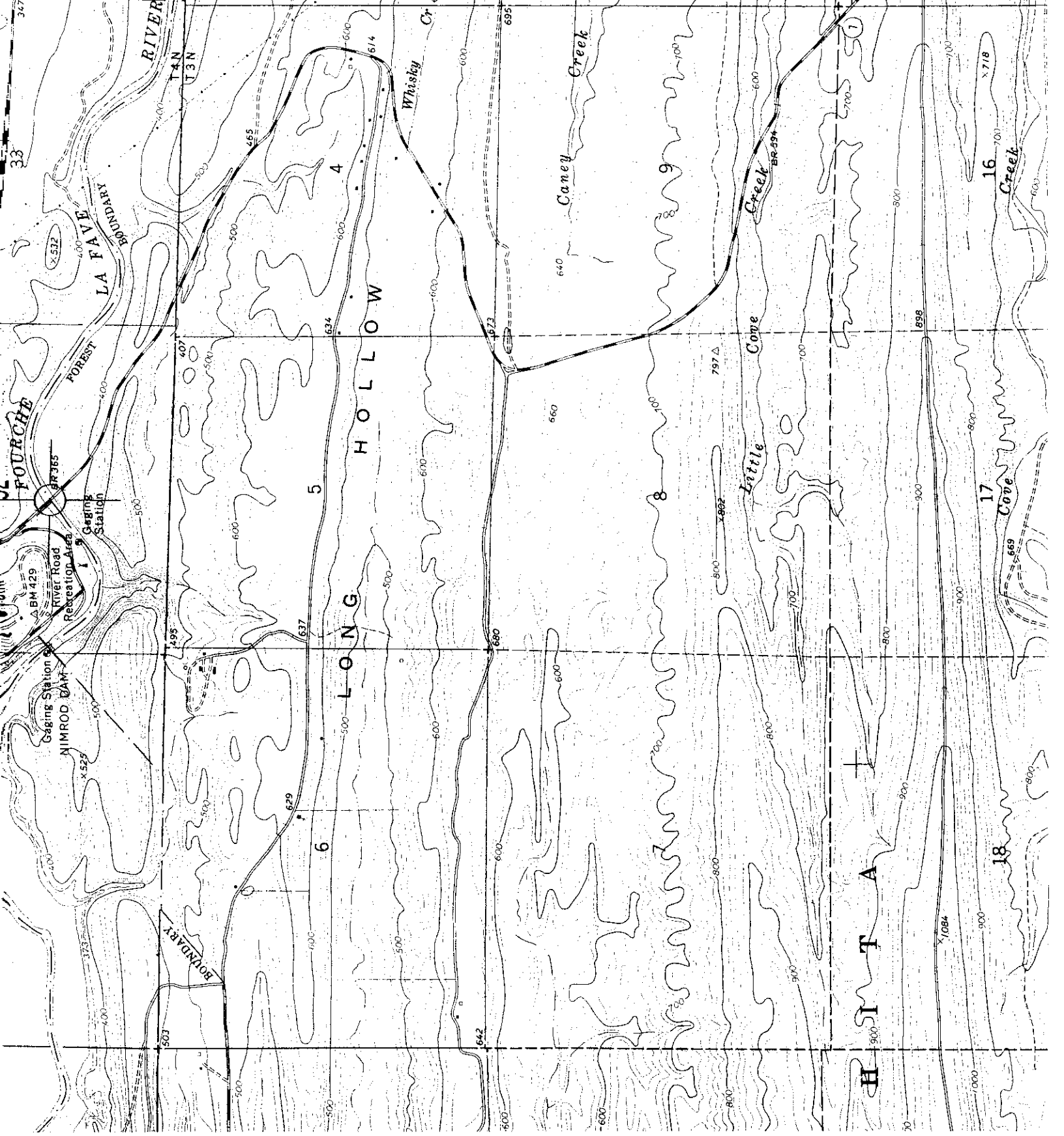
Section number 8 Page 1

Significance

Constructed in 1941 the Fourche LaFave River Bridge is associated with the *World War II Era* historic context and is of the open spandrel concrete masonry deck arch type. It was erected by the Lutten Bridge Company in conjunction with the Arkansas State Highway Commission and the Federal Works Agency Public Roads Administration. Given its relatively intact condition it retains sufficient integrity to remain associated with its historic period; it is thus locally eligible under Criterion C.

15/486100/ 3892533

NIMROD 3.2 MI
CONWAY 4.3 MI



397

396

395

394

393

392

391

390

389

388

387

386

385

384

383

382

381

380

379

378

377

376

375

374

373

372

371

370

369

368

367

366

365

364

363

362

361

360

359

358

357

356

355

354

353

352

351

350

349

348

347

346

345

344

343

342

341

340

339

338

337

336

335

334

333

332

331

330

329

328

327

326

325

324

323

322

321

320

319

318

317

316

315

314

313

312

311

310

309

308

307

306

305

304

303

302

301

300

299

298

297

296

295

294

293

292

291

290

289

288

287

286

285

284

283

282

281

280

279

278

277

276

275

274

273

272

271

270

269

268

267

266

265

264

263

262

261

260

259

258

257

256

255

254

253

252

251

250

249

248

247

246

245

244

243

242

241

240

239

238

237

236

235

234

233

232

231

230

229

228

227

226

225

224

223

222

221

220

219

218

217

216

215

214

213

212

211

210

209

208

207

206

205

204

203

202

201

200

199

198

197

<