

United States Department of the Interior  
National Park Service

NATIONAL REGISTER OF HISTORIC PLACES  
REGISTRATION FORM

=====

1. Name of Property

=====

historic name: West James Street Overpass

other name/site number: JE0534

=====

2. Location

=====

street & number: West James Street at crossing of Union-Pacific Railroad

not for publication: N/A

city/town: Redfield

vicinity: X

state: AR county: Jefferson code: AR 069 zip code: 72132

=====

3. Classification

=====

Ownership of Property: Public-local

Category of Property: Structure

Number of Resources within Property:

Contributing      Noncontributing

<u>      </u>	<u>      </u>	buildings
<u>      </u>	<u>      </u>	sites
<u>  1  </u>	<u>      </u>	structures
<u>      </u>	<u>      </u>	objects
<u>  1  </u>	<u>  0  </u>	Total

Number of contributing resources previously listed in the National Register: N/A

Name of related multiple property listing: Historic Bridges of Arkansas

=====  
**4. State/Federal Agency Certification**  
=====

As the designated authority under the National Historic Preservation Act of 1986, as amended, I hereby certify that this X nomination \_\_\_\_\_ request for determination of eligibility meets the documentation standards for registering properties in the National Register of Historic Places and meets the procedural and professional requirements set forth in 36 CFR Part 60. In my opinion, the property X meets \_\_\_\_\_ does not meet the National Register Criteria. \_\_\_\_\_ See continuation sheet.

Cathryn A. Slater  
Signature of certifying official

4-5-95  
Date

Arkansas Historic Preservation Program  
State or Federal agency and bureau

In my opinion, the property \_\_\_\_\_ meets \_\_\_\_\_ does not meet the National Register criteria. \_\_\_\_\_ See continuation sheet.

\_\_\_\_\_  
Signature of commenting or other official

\_\_\_\_\_  
Date

\_\_\_\_\_  
State or Federal agency and bureau

=====  
**5. National Park Service Certification**  
=====

I, hereby certify that this property is:

\_\_\_\_ entered in the National Register

\_\_\_\_ See continuation sheet.

\_\_\_\_ determined eligible for the  
National Register

\_\_\_\_ See continuation sheet.

\_\_\_\_ determined not eligible for the  
National Register

\_\_\_\_ removed from the National Register

\_\_\_\_ other (explain): \_\_\_\_\_

\_\_\_\_\_  
Signature of Keeper

\_\_\_\_\_  
Date  
of Action

=====  
**6. Function or Use**  
=====

Historic: TRANSPORTATION

Sub: Road-related

Current: TRANSPORTATION

Sub: Road-related

=====  
**7. Description**  
=====

Architectural Classification:

Other  
\_\_\_\_\_  
\_\_\_\_\_

Other Description: Timber trestle

Materials:	foundation	<u>Wood</u>	roof	<u>N/A</u>
	walls	<u>Metal/concrete</u>	other	<u>Timber deck</u>
		<u>balustrade</u>		

Describe present and historic physical appearance. X See continuation sheet.

=====  
**8. Statement of Significance**  
=====

Certifying official has considered the significance of this property in relation to other properties: Local.

Applicable National Register Criteria: C

Criteria Considerations (Exceptions): N/A

Areas of Significance: ENGINEERING  
\_\_\_\_\_  
\_\_\_\_\_  
\_\_\_\_\_

Period(s) of Significance: 1924-1939

Significant Dates: 1924

Significant Person(s): N/A  
\_\_\_\_\_

Cultural Affiliation: N/A

Architect/Builder: Unknown  
\_\_\_\_\_  
\_\_\_\_\_

State significance of property, and justify criteria, criteria considerations, and areas and periods of significance noted above.  
X See continuation sheet.

=====
9. Major Bibliographical References
=====

See "Historic Bridges of Arkansas" MPS Nomination, Section H.

\_\_\_ See continuation sheet.

Previous documentation on file (NPS):

- preliminary determination of individual listing (36 CFR 67) has been requested.
- previously listed in the National Register
- previously determined eligible by the National Register
- designated a National Historic Landmark
- recorded by Historic American Buildings Survey # \_\_\_\_\_
- recorded by Historic American Engineering Record # \_\_\_\_\_

Primary Location of Additional Data:

- X State historic preservation office
- Other state agency
- Federal agency
- Local government
- University
- Other -- Specify Repository: \_\_\_\_\_

=====
10. Geographical Data
=====

Acreage of Property: Less than one

Table with 4 columns: UTM References, Zone, Easting, Northing. Rows A, B, C, D with values like 15, 574880, 3811660.

\_\_\_ See continuation sheet.

Verbal Boundary Description: \_\_\_ See continuation sheet.

Beginning at a point formed by the intersection of the northwestern edge of West James Street with a perpendicular line running parallel with the northeastern end of the bridge and located approximately 25 feet to the northeast thereof, proceed northwesterly for a distance of approximately 25 feet to its intersection with a perpendicular line running parallel with the bridge's northwestern side; thence proceed southwesterly along said line for a distance of approximately 181 feet to its intersection with a perpendicular line; thence proceed southeasterly along said line for a distance of approximately 76.5 feet to its intersection with a perpendicular line; thence proceed northeasterly along said line for a distance of approximately 181 feet to its intersection with a perpendicular line; thence proceed northwesterly to the point of beginning.

Boundary Justification: \_\_\_ See continuation sheet.

This boundary includes all the property historically associated with this resource.

=====  
**11. Form Prepared By**  
=====

Name/Title: Ken Story, National Register/Survey Coordinator  
Organization: Arkansas Historic Preservation Program Date: 04/04/95  
Street & Number: 323 Center Street, Suite 1500 Telephone: (501) 324-9880  
City or Town: Little Rock State: AR Zip: 72201

**United States Department of the Interior  
National Park Service**

# **National Register of Historic Places Continuation Sheet**

Section number   7   Page   1  

---

## **Description**

Located on West James Street at the point where it crosses the Missouri-Pacific Railroad line (approximately two blocks east of State Highway 365), the West James Street Overpass is of the wooden trestle bridge type. It consists of a total of six spans, the longest of which measures 22 feet. Its total length is 131 feet, with a deck width of 20 feet and an overall width of 26.5 feet. The abutments are a combination of wood and concrete, and the piers are timber resting upon concrete bases. The deck material is timber. The balustrade is constructed of concrete pillar uprights with metal pipe railings.

**United States Department of the Interior  
National Park Service**

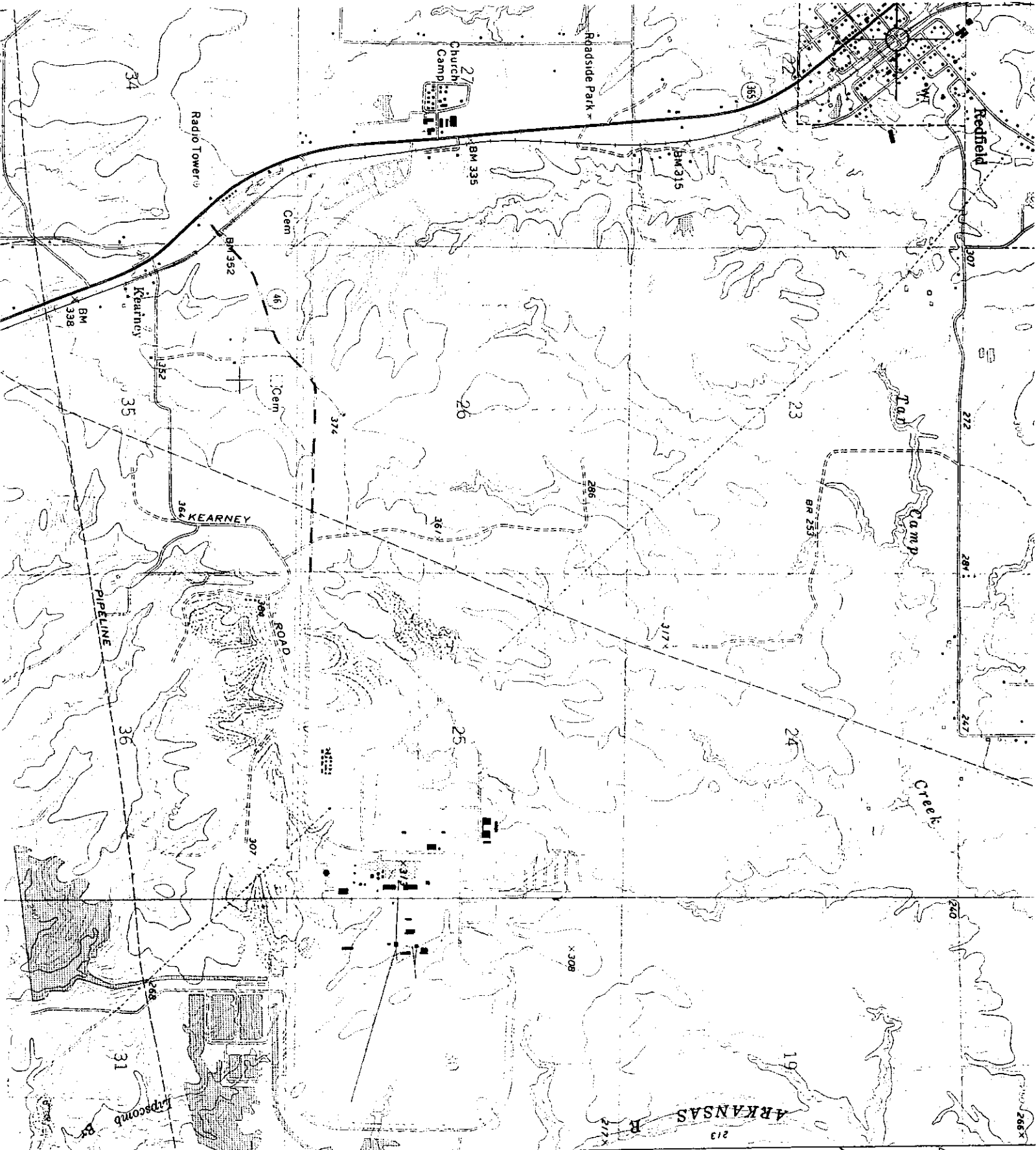
# **National Register of Historic Places Continuation Sheet**

Section number   8   Page   1  

---

## **Significance**

Constructed in 1924, the West James Street Overpass is associated with the *Arkansas Highway and Transportation Era* historic context and is of the timber wooden trestle type. Though the identity of its original designer does not survive, it was constructed in conjunction with the Arkansas State Highway Commission and thus may well have been designed by one of that state agency's engineers. Given its relatively intact condition it retains sufficient integrity to remain associated with its historic period and is thus locally eligible under Criterion C.



213  
 ARKANSAS

3811  
 (WRIGHT) NE 1  
 7552

3812  
 15/524000/  
 3710000  
 WILSON  
 11/11/50  
 11/11/50