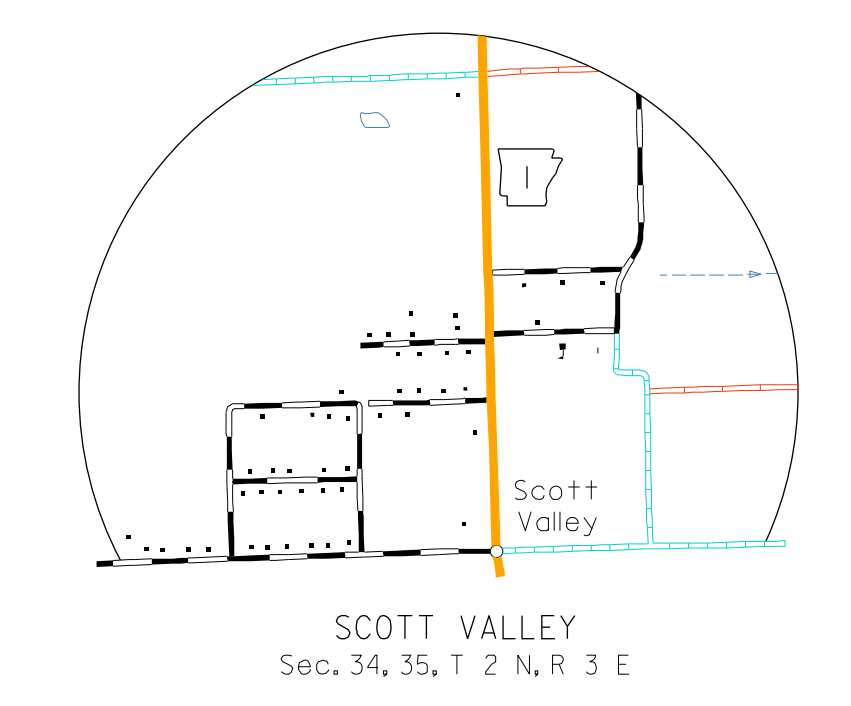
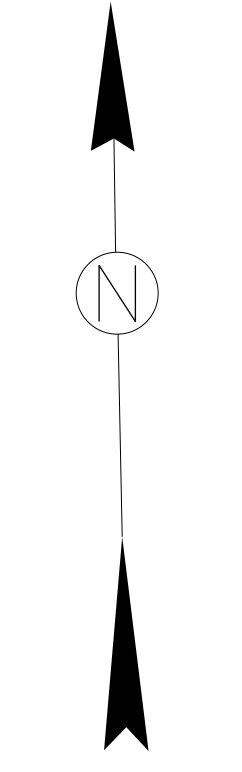
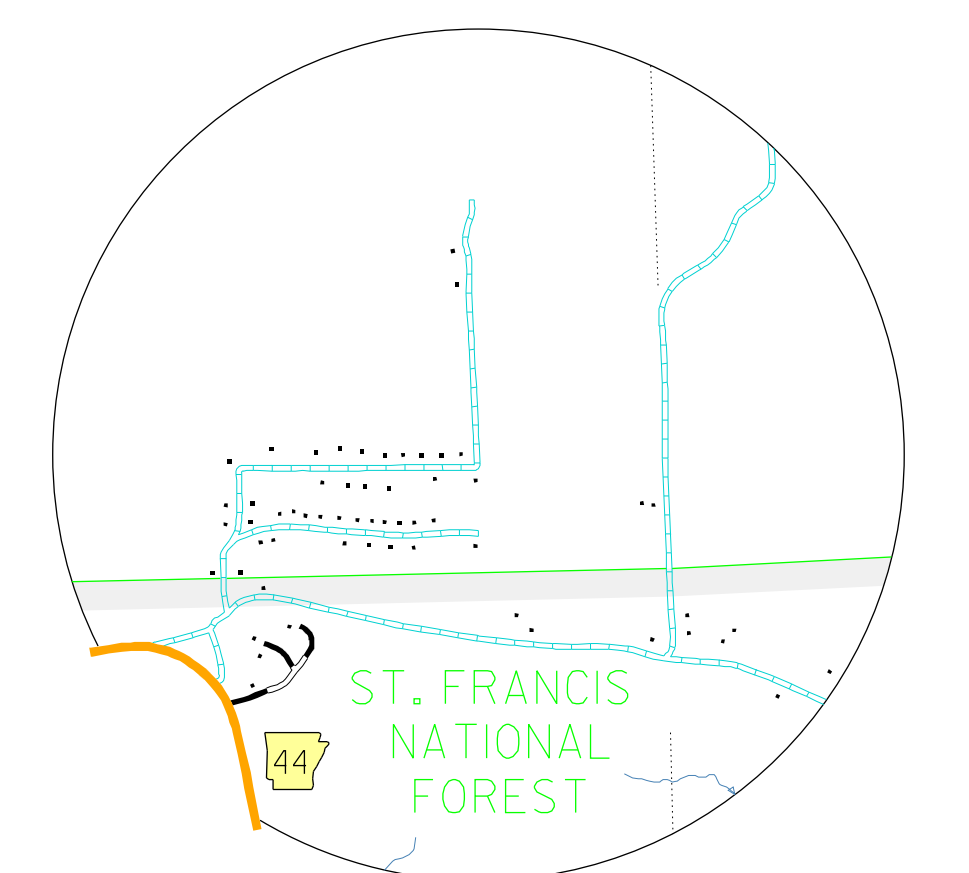


- LEGEND**
- STATE BOUNDARY
 - COUNTY BOUNDARY
 - STATE OR COUNTY LINE INDETERMINATE
 - U.S. LAND TOWNSHIP LINE
 - SECTION LINE
 - NATIONAL FOREST BOUNDARY
 - PAVED STATE OR U.S. HIGHWAY
 - DIVIDED HIGHWAY (SEE OR USE LINE WITH OR WITHOUT CENTER OF ROAD)
 - U.S. NUMBERED HIGHWAY
 - STATE HIGHWAY
 - PAVED LOCAL ROAD
 - GRAVEL LOCAL ROAD
 - GRAVEL & DRAINED LOCAL ROAD
 - UNIMPROVED LOCAL ROAD
 - RAILROAD (SEE NUMBER OF TRACKS LISTED BY A ROAD OR OTHER SYMBOL)
 - RAILROAD STATION
 - GRADE CROSSING
 - OVERPASS
 - UNDERPASS
 - HIGHWAY BRIDGE (SEE FEET OR MORE IN LENGTH)
 - LEVEE OR DIKE
 - LEVEE WITH ROAD
 - MILEAGE BETWEEN POINTS
 - LAKE, RESERVOIR OR POND
 - LAKE, RESERVOIR OR POND WITH DAM
 - MARSH OR SWAMP
 - WIDE RIVER OR STREAM
 - DOCK, PIER OR LANDING
 - NAVIGABLE STREAM
 - INTERMITTENT NAVIGATION
 - HEAD OF NAVIGATION (SEE GOVERNMENT DOCUMENT)
 - SMALL STREAM
 - DRAINAGE DITCH
 - CORPORATE LIMITS AND ROADS THROUGH TOWN
 - COUNTY SEAT
 - OTHER CITIES AND TOWNS
 - MUNICIPAL AIRPORT
 - PRIVATE AIRFIELD
 - FARM UNIT OR DWELLING
 - GROUP OF CLOSELY SPACED DWELLINGS (IF NO FEET SHOWN)
 - CHURCH OR OTHER RELIGIOUS INSTITUTION
 - SCHOOL
 - POST OFFICE & POST OFFICE AND BUSINESS
 - CEMETERY
 - CHURCH WITH CEMETERY ADJACENT
 - BUSINESS ESTABLISHMENT
 - GRAVEL PIT
 - QUARRY
 - COUNTY OR STATE PRISON
 - A.H.T.D. GARAGE OR COUNTY GARAGE
 - POWER SUBSTATION
 - FISH HATCHERY
 - HISTORICAL MONUMENT
 - OBSERVATION OR LOOKOUT TOWER
 - CAMP OR LODGE
 - GOLF COURSE OR COUNTRY CLUB
 - ATHLETIC FIELD OR AMUSEMENT PARK
 - SMALL PARK (BY STATE OR COUNTY OR MUNICIPALITY, BY PARALLEL TO FEET AREA)
 - WATER SUPPLY, STANDPIPE OR TANK
 - SEWAGE DISPOSAL PLANT
 - SCENIC HIGHWAY

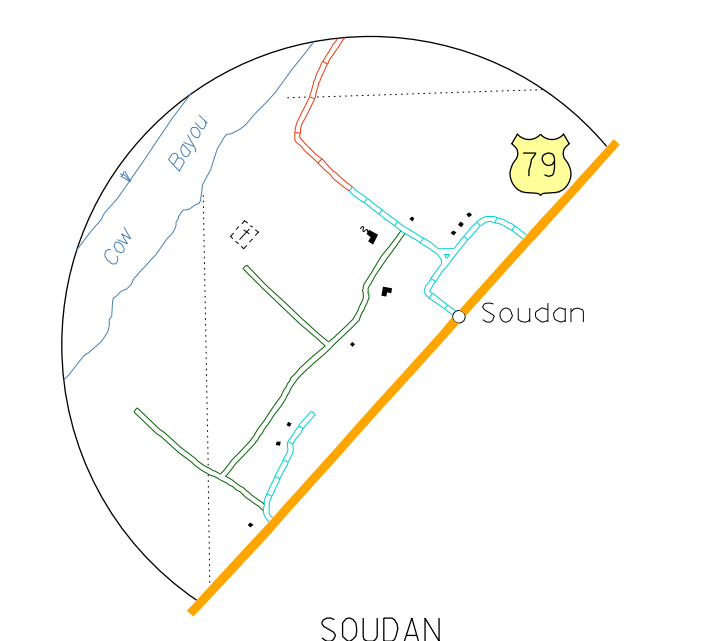
GENERAL HIGHWAY MAP
LEE COUNTY
 ARKANSAS
 PREPARED BY
 ARKANSAS STATE HIGHWAY AND TRANSPORTATION DEPARTMENT
 PLANNING AND RESEARCH DIVISION
 IN COOPERATION WITH
 U.S. DEPARTMENT OF TRANSPORTATION
 FEDERAL HIGHWAY ADMINISTRATION
 SCALE 1:62,500
 MILES
 KILOMETERS



SCOTT VALLEY
 Sec. 34, 35, T. 2 N., R. 3 E.



INSET NO. 1
 Sec. 19, 20, 30, 29 T. 2 N., R. 4 E.



SOUDAN
 Sec. 26, 27, 34, 35 T. 3 N., R. 4 E.

NOTE: Enlargements of all congested areas are five times map scale unless otherwise noted.
 Individual maps are available for all active incorporated cities.
 Area: 684.7 square miles
 Population: 62,080 - 2000 Census
 Map issued 12-29-08, replaces map issued 4-6-97
 Field Inventory: R14
 Map revisions made from aerial photographs taken 2-18-04
 Map completion completed 12-22-08
 County map produced using Computer Assisted Cartography.

Copies of this map are available at a nominal fee from The Arkansas State Highway and Transportation Department, P.O. Box 226-111 He Rock, Ark. 72203

