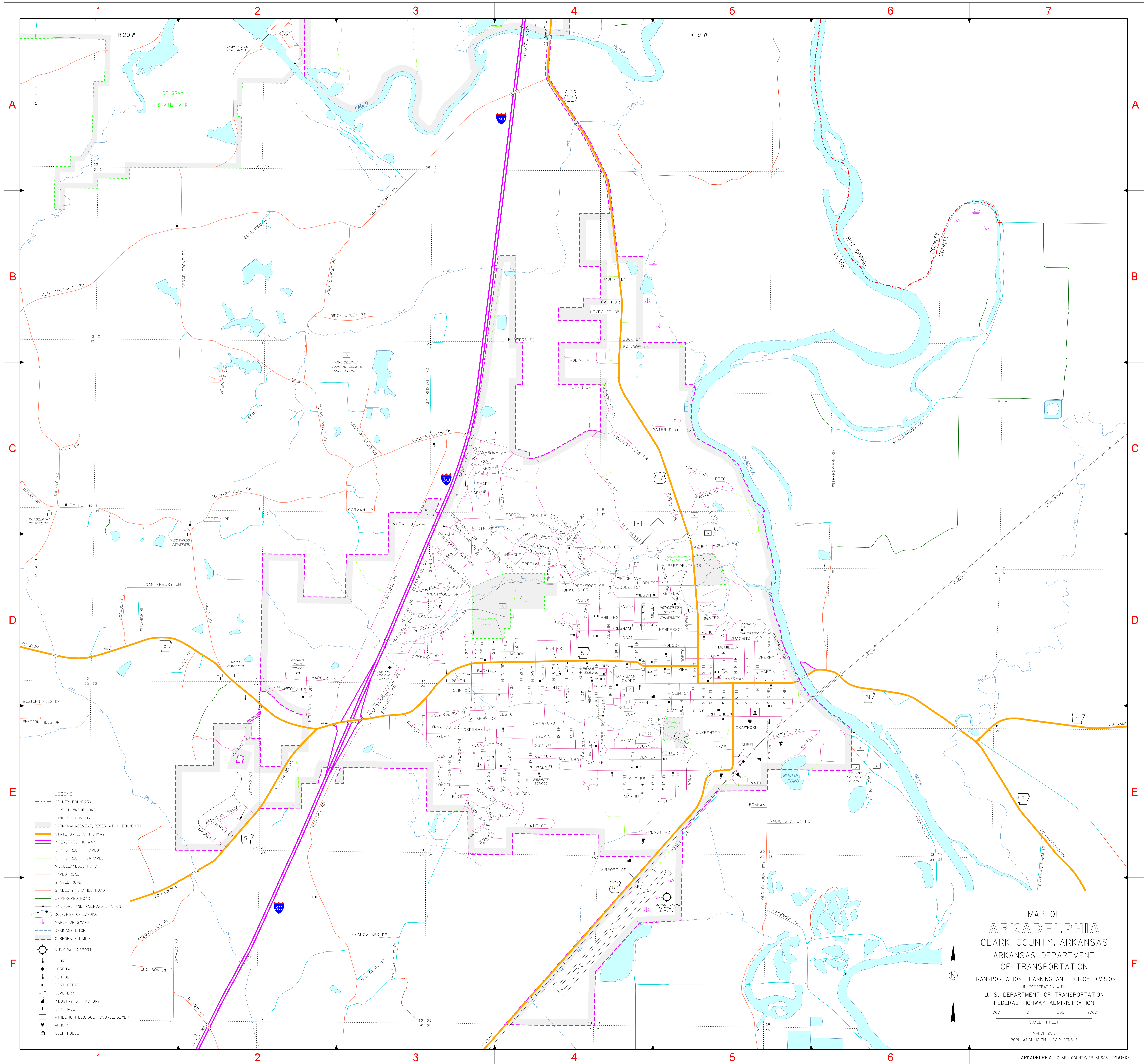


INDEX

A	ROBEY LN
B	ROBIN LN
C	ROBIN LN
D	ROBIN LN
E	ROBIN LN
F	ROBIN LN
G	ROBIN LN
H	ROBIN LN
I	ROBIN LN
J	ROBIN LN
K	ROBIN LN
L	ROBIN LN
M	ROBIN LN
N	ROBIN LN
O	ROBIN LN
P	ROBIN LN
Q	ROBIN LN
R	ROBIN LN
S	ROBIN LN
T	ROBIN LN
U	ROBIN LN
V	ROBIN LN
W	ROBIN LN
X	ROBIN LN
Y	ROBIN LN
Z	ROBIN LN
AA	ROBIN LN
AB	ROBIN LN
AC	ROBIN LN
AD	ROBIN LN
AE	ROBIN LN
AF	ROBIN LN
AG	ROBIN LN
AH	ROBIN LN
AI	ROBIN LN
AJ	ROBIN LN
AK	ROBIN LN
AL	ROBIN LN
AM	ROBIN LN
AN	ROBIN LN
AO	ROBIN LN
AP	ROBIN LN
AQ	ROBIN LN
AR	ROBIN LN
AS	ROBIN LN
AT	ROBIN LN
AU	ROBIN LN
AV	ROBIN LN
AW	ROBIN LN
AX	ROBIN LN
AY	ROBIN LN
AZ	ROBIN LN
BA	ROBIN LN
BB	ROBIN LN
BC	ROBIN LN
BD	ROBIN LN
BE	ROBIN LN
BF	ROBIN LN
BG	ROBIN LN
BH	ROBIN LN
BI	ROBIN LN
BJ	ROBIN LN
BK	ROBIN LN
BL	ROBIN LN
BM	ROBIN LN
BN	ROBIN LN
BO	ROBIN LN
BP	ROBIN LN
BQ	ROBIN LN
BR	ROBIN LN
BS	ROBIN LN
BT	ROBIN LN
BU	ROBIN LN
BV	ROBIN LN
BW	ROBIN LN
BX	ROBIN LN
BY	ROBIN LN
BZ	ROBIN LN
CA	ROBIN LN
CB	ROBIN LN
CC	ROBIN LN
CD	ROBIN LN
CE	ROBIN LN
CF	ROBIN LN
CG	ROBIN LN
CH	ROBIN LN
CI	ROBIN LN
CJ	ROBIN LN
CK	ROBIN LN
CL	ROBIN LN
CM	ROBIN LN
CN	ROBIN LN
CO	ROBIN LN
CP	ROBIN LN
CQ	ROBIN LN
CR	ROBIN LN
CS	ROBIN LN
CT	ROBIN LN
CU	ROBIN LN
CV	ROBIN LN
AW	ROBIN LN
AX	ROBIN LN
AY	ROBIN LN
AZ	ROBIN LN
BA	ROBIN LN
BB	ROBIN LN
BC	ROBIN LN
BD	ROBIN LN
BE	ROBIN LN
BF	ROBIN LN
BG	ROBIN LN
BH	ROBIN LN
BI	ROBIN LN
BJ	ROBIN LN
BK	ROBIN LN
BL	ROBIN LN
BM	ROBIN LN
BN	ROBIN LN
BO	ROBIN LN
BP	ROBIN LN
BQ	ROBIN LN
BR	ROBIN LN
BS	ROBIN LN
BT	ROBIN LN
BU	ROBIN LN
BV	ROBIN LN
BW	ROBIN LN
BX	ROBIN LN
BY	ROBIN LN
BZ	ROBIN LN
CA	ROBIN LN
CB	ROBIN LN
CC	ROBIN LN
CD	ROBIN LN
CE	ROBIN LN
CF	ROBIN LN
CG	ROBIN LN
CH	ROBIN LN
CI	ROBIN LN
CJ	ROBIN LN
CK	ROBIN LN
CL	ROBIN LN
CM	ROBIN LN
CN	ROBIN LN
CO	ROBIN LN
CP	ROBIN LN
CQ	ROBIN LN
CR	ROBIN LN
CS	ROBIN LN
CT	ROBIN LN
CU	ROBIN LN
CV	ROBIN LN



- LEGEND**
- COUNTY BOUNDARY
 - U. S. TOWNSHIP LINE
 - LAND SECTION LINE
 - PARK, MANAGEMENT, RESERVATION BOUNDARY
 - STATE OR U. S. HIGHWAY
 - INTERSTATE HIGHWAY
 - CITY STREET - PAVED
 - CITY STREET - UNPAVED
 - MISCELLANEOUS ROAD
 - PAVED ROAD
 - GRAVEL ROAD
 - GRADED & DRAINED ROAD
 - UNIMPROVED ROAD
 - RAILROAD AND RAILROAD STATION
 - DOCK, PIER OR LANDING
 - MARSH OR SWAMP
 - DRAINAGE DITCH
 - CORPORATE LIMITS
 - MUNICIPAL AIRPORT
 - ✠ CHURCH
 - ✠ HOSPITAL
 - ✠ SCHOOL
 - ✠ POST OFFICE
 - ✠ CEMETERY
 - ✠ INDUSTRY OR FACTORY
 - ✠ CITY HALL
 - ✠ ATHLETIC FIELD, GOLF COURSE, SEWER
 - ✠ ARMORY
 - ✠ COURTHOUSE

MAP OF
ARKADELPHIA
 CLARK COUNTY, ARKANSAS
 ARKANSAS DEPARTMENT
 OF TRANSPORTATION
 TRANSPORTATION PLANNING AND POLICY DIVISION
IN COOPERATION WITH
 U. S. DEPARTMENT OF TRANSPORTATION
 FEDERAL HIGHWAY ADMINISTRATION

1000 0 1000 2000
 SCALE IN FEET

MARCH 2008
 POPULATION 10,714 - 2000 CENSUS

ARKADELPHIA CLARK COUNTY, ARKANSAS 250-10