

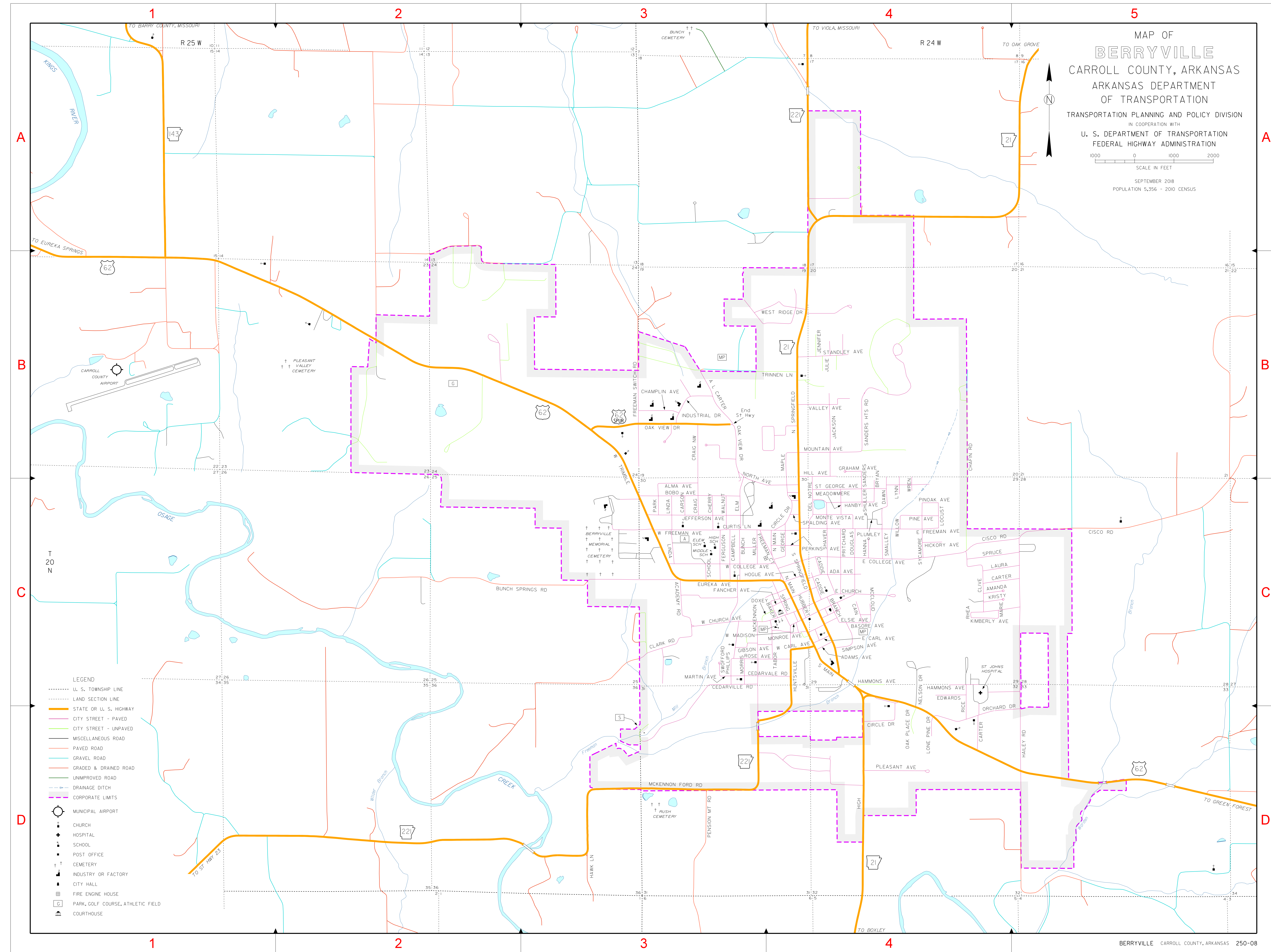
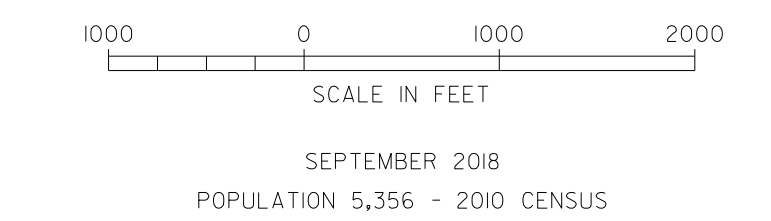
INDEX

- B-3
- B-4
- C-3
- C-4
- C-5
- C-6
- C-7
- C-8
- C-9
- C-10
- C-11
- C-12
- C-13
- C-14
- C-15
- C-16
- C-17
- C-18
- C-19
- C-20
- C-21
- C-22
- C-23
- C-24
- C-25
- C-26
- C-27
- C-28
- C-29
- C-30
- C-31
- C-32
- C-33
- C-34
- C-35
- C-36
- C-37
- C-38
- C-39
- C-40
- C-41
- C-42
- C-43
- C-44
- C-45
- C-46
- C-47
- C-48
- C-49
- C-50
- C-51
- C-52
- C-53
- C-54
- C-55
- C-56
- C-57
- C-58
- C-59
- C-60
- C-61
- C-62
- C-63
- C-64
- C-65
- C-66
- C-67
- C-68
- C-69
- C-70
- C-71
- C-72
- C-73
- C-74
- C-75
- C-76
- C-77
- C-78
- C-79
- C-80
- C-81
- C-82
- C-83
- C-84
- C-85
- C-86
- C-87
- C-88
- C-89
- C-90
- C-91
- C-92
- C-93
- C-94
- C-95
- C-96
- C-97
- C-98
- C-99
- C-100

MAP OF  
**BERRYVILLE**  
CARROLL COUNTY, ARKANSAS

ARKANSAS DEPARTMENT  
OF TRANSPORTATION

TRANSPORTATION PLANNING AND POLICY DIVISION  
IN COOPERATION WITH  
U. S. DEPARTMENT OF TRANSPORTATION  
FEDERAL HIGHWAY ADMINISTRATION



**LEGEND**

- ..... U. S. TOWNSHIP LINE
- ..... LAND SECTION LINE
- STATE OR U. S. HIGHWAY
- CITY STREET - PAVED
- CITY STREET - UNPAVED
- MISCELLANEOUS ROAD
- PAVED ROAD
- GRAVEL ROAD
- GRADED & DRAINED ROAD
- UNIMPROVED ROAD
- DRAINAGE DITCH
- CORPORATE LIMITS
- MUNICIPAL AIRPORT
- ⊕ CHURCH
- ⊕ HOSPITAL
- ⊕ SCHOOL
- ⊕ POST OFFICE
- ⊕ CEMETERY
- ⊕ INDUSTRY OR FACTORY
- ⊕ CITY HALL
- ⊕ FIRE ENGINE HOUSE
- ⊕ PARK, GOLF COURSE, ATHLETIC FIELD
- ⊕ COURTHOUSE