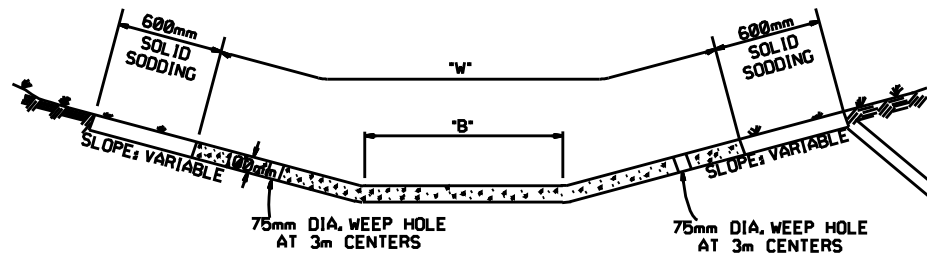
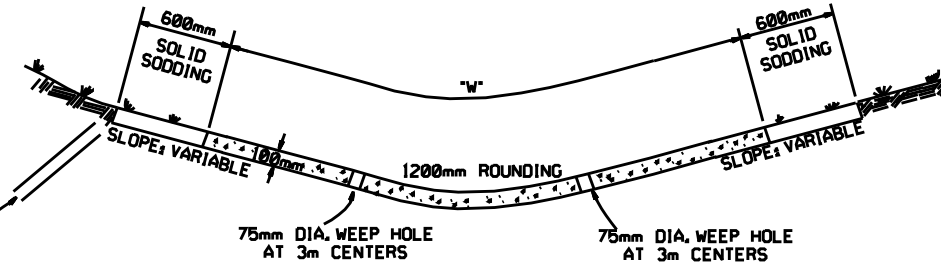


REFER TO TABULATION OF QUANTITIES FOR 'W' & 'B' DIMENSIONS



TYPE A

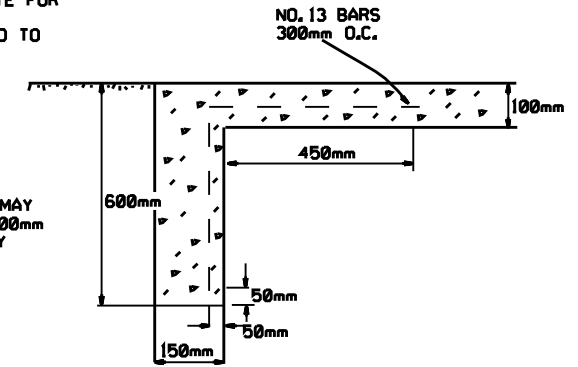
REFER TO TABULATION OF QUANTITIES FOR 'W' DIMENSIONS



TYPE B

EXCAVATE TO NEAT LINES TO CONSTRUCT DITCH PAVING AND SOLID SODDING.

THE STEEL AND ADDITIONAL CONCRETE FOR THE WALLS SHALL NOT BE PAID FOR DIRECTLY, BUT SHALL BE CONSIDERED TO BE INCLUDED IN THE PRICE BID FOR "CONCRETE DITCH PAVING."

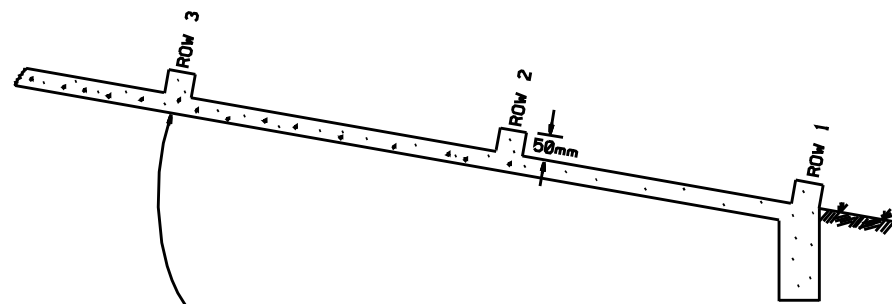


TOE WALL DETAIL FOR CONCRETE DITCH PAVING

TOE WALL DEPTH MAY BE ALTERED TO 300mm WHEN DIRECTED BY THE ENGINEER IN ROCK EXCAVATION

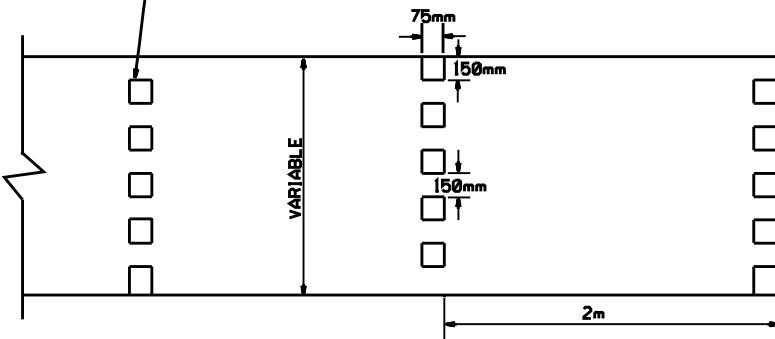
GENERAL NOTES

1. THE FULL WIDTH OF EACH SECTION SHALL BE POURED MONOLITHICALLY.
2. TOE WALLS TO BE CONSTRUCTED FULL WIDTH AT EACH END OF DITCH PAVING, AND POURED MONOLITHICALLY.
3. SOLID SOD ALONG DITCH PAVING TO BE PLACED WITHIN 14 DAYS OF DITCH PAVING CONSTRUCTION.



NUMBER OF ELEMENTS PER ROW VARIES WITH WIDTH OF PAVING SPECIFIED

ENERGY DISSIPATORS TO BE USED FOR THE ENTIRE LENGTH OF DITCH WHEN SLOPE OF DITCH PAVING EXCEEDS 7%. THE DISSIPATORS WILL NOT BE PAID FOR DIRECTLY, BUT SHALL BE CONSIDERED TO BE INCLUDED IN THE PRICE BID FOR CONCRETE DITCH PAVING.



ENERGY DISSIPATORS
(NO SCALE)

ARKANSAS STATE HIGHWAY COMMISSION

CONCRETE DITCH PAVING

STANDARD DRAWING CDP-1 (M)

4-3-97	REVISED STEEL BARS TO SOFT METRIC	4-3-97
1-20-98	CONVERTED TO METRIC	
DATE	REVISION	DATE