

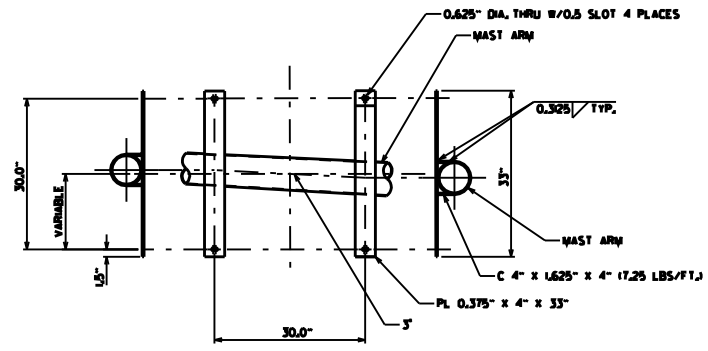
DATE REVISION	DATE REVISION	DATE REVISION	DATE REVISION	TOTAL NO.	DATE	BY	CHKD.	APP'D.
				6	ARK.			

OVERHEAD SIGN DETAILS

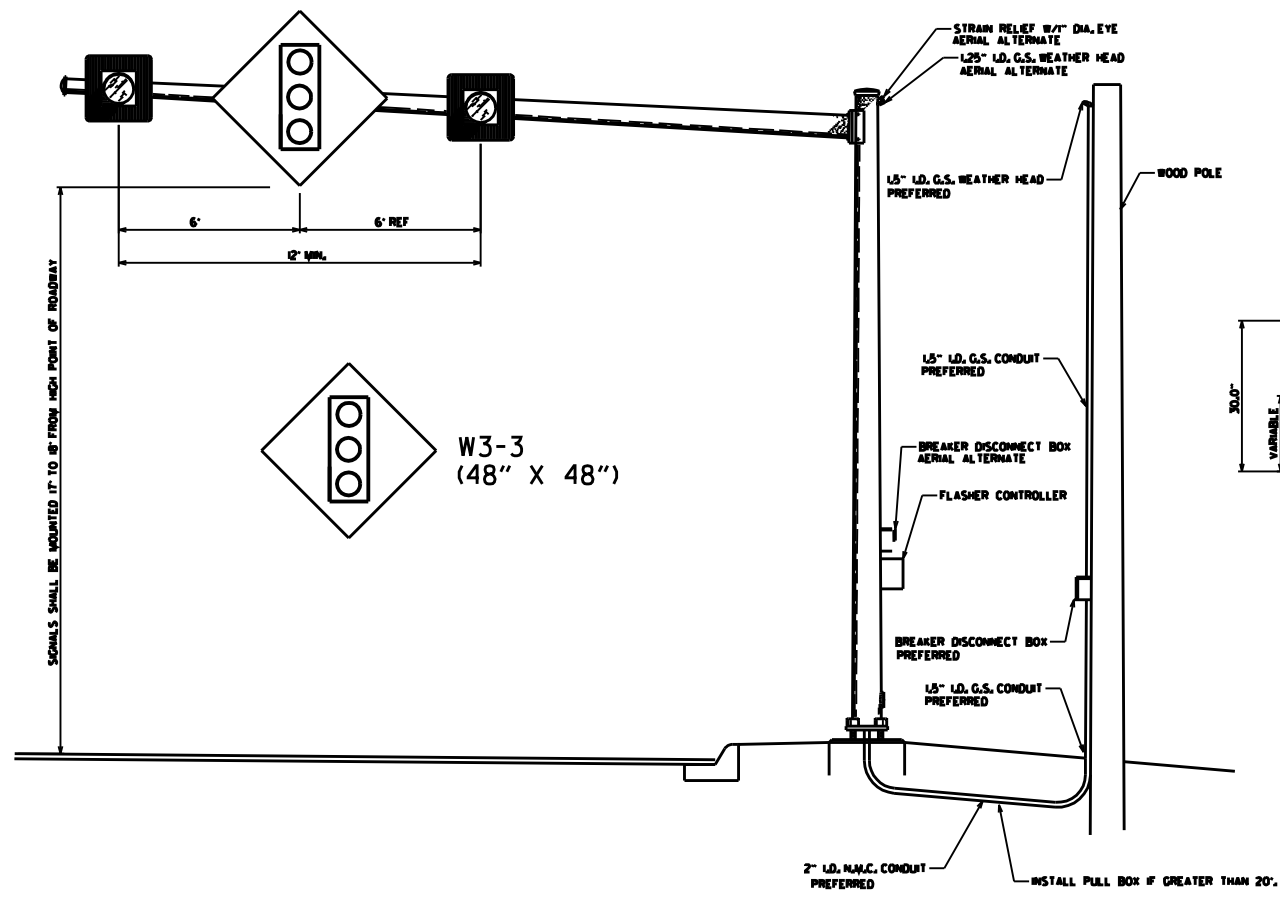


**NOTES**

1. THE SIGN MOUNTING BRACKET SHALL BE SUBSIDIARY TO THE PAY ITEM - TRAFFIC SIGNAL MAST ARM AND POLE WITH FOUNDATION.
2. MAST ARM, POLE, HARDWARE, AND MOUNTING BRACKET SHALL BE GALVANIZED IN ACCORDANCE WITH SECTION 704.
3. A COMMERCIAL MANUFACTURED MOUNTING PLATE OR BRACKET MAY BE SUBMITTED FOR APPROVAL IN LIEU OF THE MOUNTING PLATE SHOWN.
4. EACH SIGNAL HEAD SHALL HAVE A SEPARATE 5 CONDUCTOR SIGNAL CABLE.



**MOUNTING BRACKET**  
N.T.S.



**OVERHEAD SIGN MOUNTING DETAILS**  
N.T.S.

DATE	REVISION	DATE FILED
4-17-08	MINOR REVISIONS	
6-21-06	REVISED	
4-14-03	REVISED	
7-14-95	ISSUED	

ARKANSAS STATE HIGHWAY COMMISSION  
**OVERHEAD SIGN DETAILS**  
Overhead Sign Mounted on  
Steel Pole with Mast Arm