

DATE REVISED	DATE FILMED	DATE REVISED	DATE FILMED	FED. RD. DIST. NO.	STATE	FED. AID PROJ. NO.	SHEET NO.	TOTAL SHEETS
				6	ARK.			
JOB NO.								

2 SIGNALIZATION DETAILS



DESIGN SPECIFICATIONS: AASHTO STANDARD SPECIFICATIONS FOR STRUCTURAL SUPPORTS FOR HIGHWAY SIGNS, LUMINAIRES AND TRAFFIC SIGNALS, 4TH EDITION (2001) WITH 2003 AND 2006 INTERIMS.

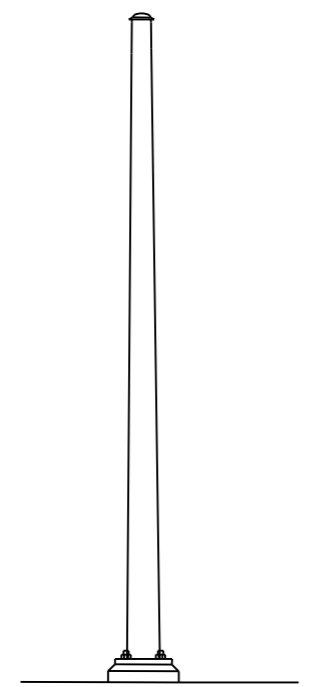
USE FATIGUE CATEGORY II.

CONSTRUCTION SPECIFICATIONS: ARKANSAS STATE HIGHWAY AND TRANSPORTATION DEPARTMENT STANDARD SPECIFICATIONS FOR HIGHWAY CONSTRUCTION (2003 EDITION) WITH APPLICABLE SUPPLEMENTAL SPECIFICATIONS AND SPECIAL PROVISIONS.

BASE WIND SPEED: 90 MPH

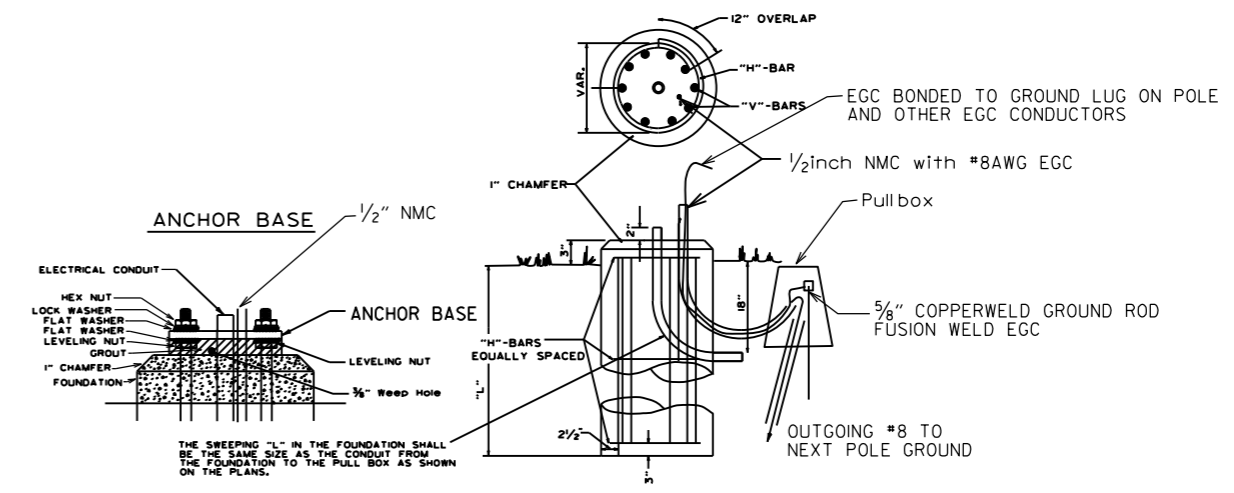
STEEL MEMBERS CONSIDERED MAIN LOAD CARRYING MEMBERS WITH A THICKNESS GREATER THAN 1/2" SHALL MEET THE LONGITUDINAL CHARPY V-NOTCH TEST SPECIFIED IN SUBSECTION 807.05 OF THE STANDARD SPECIFICATIONS.

THE GROUND ROD SHALL BE FUSION WELDED TO A 1C/*8 A.W.G. SOLID COPPER GROUND WIRE. ATTACHMENT TO THE PRIMARY GROUND MAY BE BY AN APPROVED CLAMP. THE ROD IS TO BE LOCATED IN THE CONCRETE PULL BOX PAID FOR SEPARATELY AS SHOWN ON THE PLANS.



ANTENNA POLE

NOTE: COMMUNICATION CABLE SHIELD SHALL BE TIED TO GROUND AT ONLY ONE POINT (MASTER CABINET). THE SHIELD SHALL BE MAINTAINED CONTINUOUS (THROUGH ALL SPLICES). PLEASE REFER TO TESTING PROCEDURES IN SPECIAL PROVISIONS.



TYPICAL FOUNDATION DETAILS

POLE FOUNDATION MINIMUM DIMENSIONS AND STEEL REINFORCING.

POLE HEIGHT	FOUNDATION DIAMETER	DEPTH 'L'	VERTICAL	HORIZONTAL	TIE SPACING
20.0'	30"	5'-6"	12-*7	*4	5 sp @ 12"
25.0'	30"	6'-0"	12-*7	*4	6 sp @ 11"
30.0'	30"	6'-6"	12-*7	*4	6 sp @ 12"
35.0'	30"	7'-0"	12-*7	*4	7 sp @ 11"
40.0'	30"	7'-6"	12-*7	*4	7 sp @ 12"
45.0'	36"	8'-6"	13-*8	*4	8 sp @ 12"
50.0'	36"	9'-6"	13-*8	*4	9 sp @ 12"
55.0'	36"	10'-0"	13-*8	*4	10 sp @ 11"
60.0'	36"	10'-6"	13-*8	*4	10 sp @ 12"
65.0'	36"	11'-0"	13-*8	*4	12 sp @ 10 1/2"
70.0'	36"	11'-6"	13-*8	*4	11 sp @ 12"
75.0'	42"	13'-0"	18-*8	*4	14 sp @ 10 1/2"
80.0'	42"	13'-6"	18-*8	*4	13 sp @ 12"
85.0'	42"	14'-6"	18-*8	*4	14 sp @ 12"
90.0'	42"	15'-0"	18-*8	*4	18 sp @ 9 1/2"

ALL CONCRETE SHALL BE CLASS "S" WITH A MINIMUM 28 DAY COMPRESSIVE STRENGTH F'c=3500 PSI. CONCRETE SHALL BE POURED IN THE DRY AND ALL EXPOSED CORNERS CHAMFERED 3/4" UNLESS NOTED OTHERWISE.

ALL REINFORCING STEEL SHALL CONFORM TO AASHTO M31OR M53, GRADE 40 (YIELD STRENGTH=40,000 PSI).

PROVIDE 3" CLEAR TIES. DETAIL 3" TO FIRST TIE AT TOP OF SHAFT.

stdsd01.dgn

5-21-09	REVISED GROUNDING		ARKANSAS STATE HIGHWAY COMMISSION
7-31-08	REVISED GROUNDING		
4-18-08	REVISED AASHTO NOTES		
4-17-08	REVISED TO 2001 AASHTO STANDARDS		
9-6-00	ISSUED		
DATE	REVISION	DATE FILM	SIGNALIZATION DETAIL (Antenna Pole)