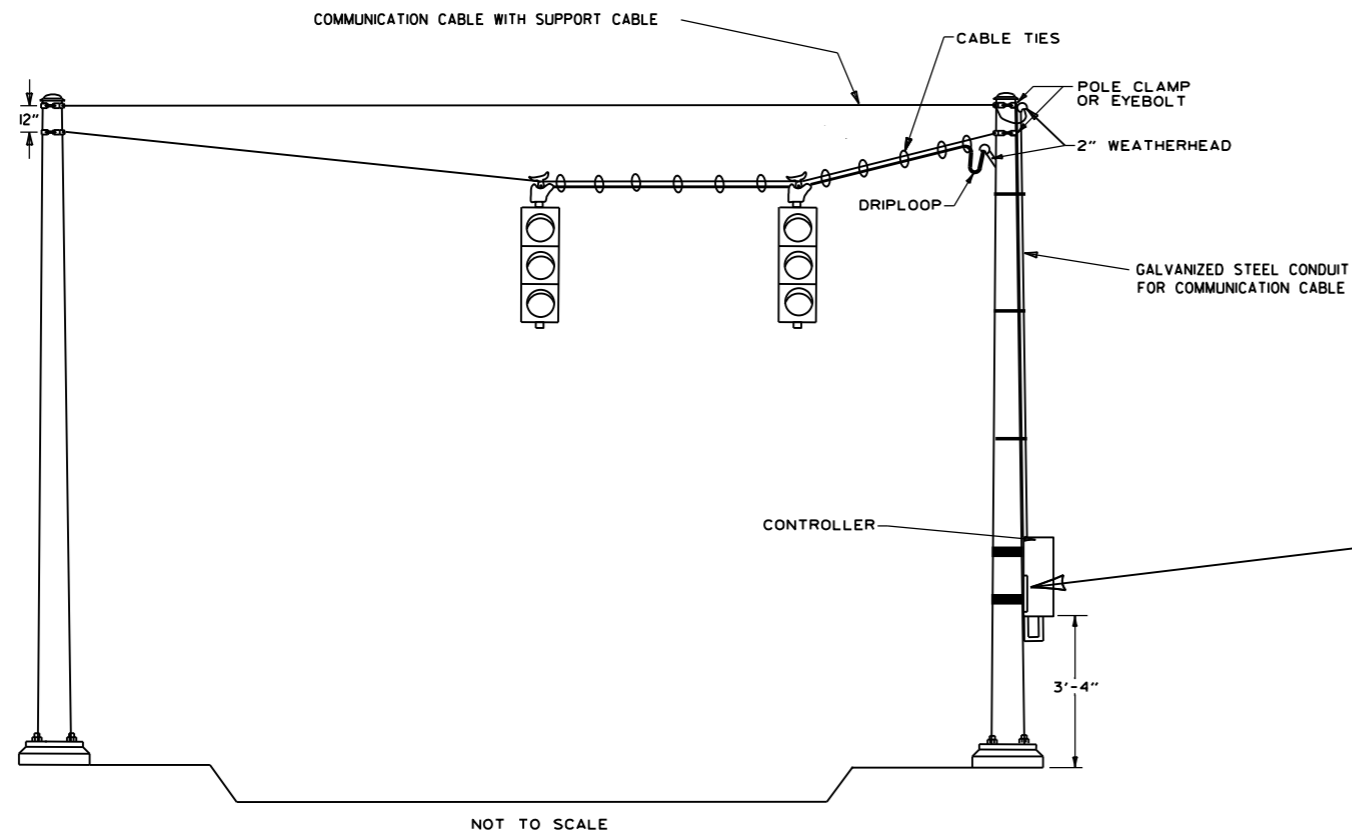


DATE REVISED	DATE FILMED	DATE REVISED	DATE FILMED	FED. RD. DIST. NO.	STATE	FED. AID PROJ. NO.	SHEET NO.	TOTAL SHEETS
				6	ARK.			
				JOB NO.				

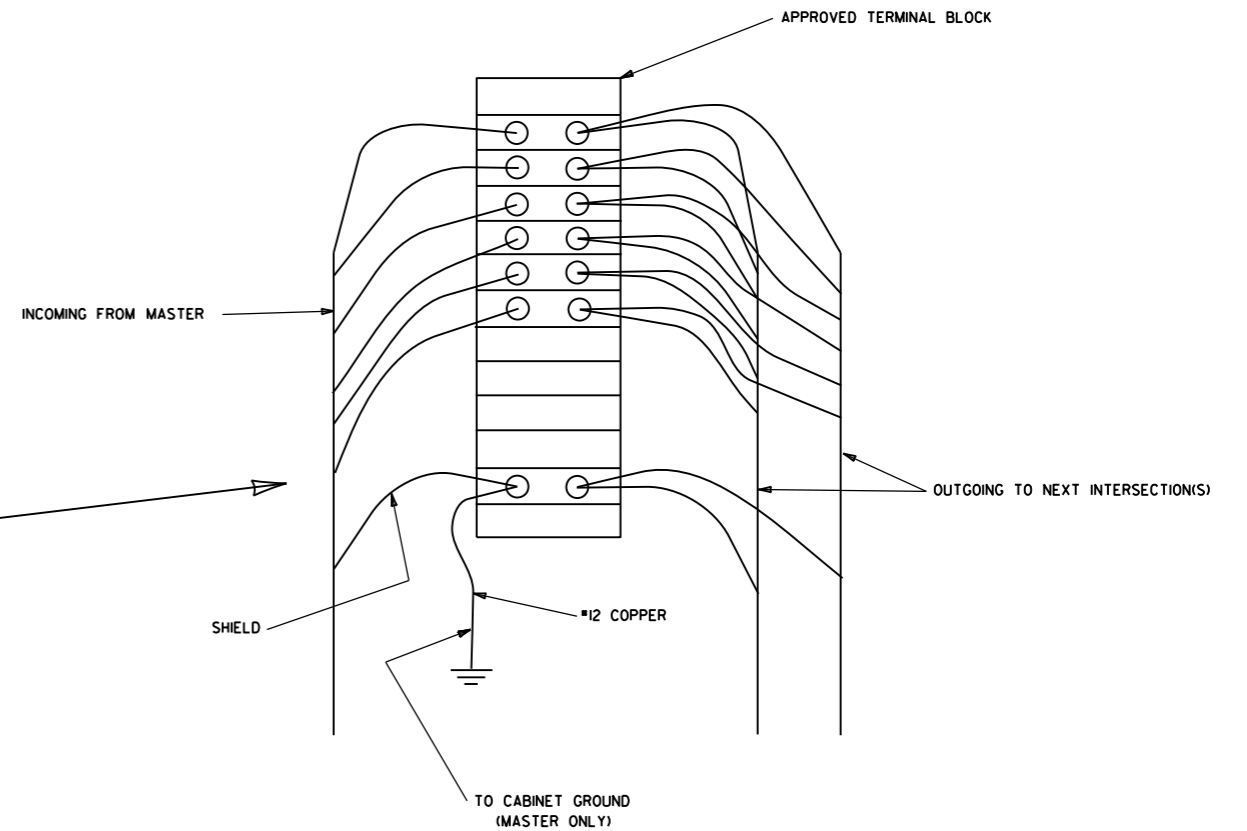
2 SIGNALIZATION DETAILS



NOT TO SCALE

COMMUNICATION CABLE CROSSING  
BETWEEN SPAN WIRE POLES

NOTE: COMMUNICATION CABLE SHIELD SHALL BE TIED TO GROUND AT ONLY ONE POINT (MASTER CABINET). THE SHIELD SHALL BE MAINTAINED CONTINUOUS (THROUGH ALL SPLICES). PLEASE REFER TO TESTING PROCEDURES IN SPECIAL PROVISIONS.



TYPICAL WIRING DIAGRAM  
FOR COMMUNICATION CABLE

stdsd3.dgn

DATE	REVISION	DATE FILM	ARKANSAS STATE HIGHWAY COMMISSION
12-27-99	REVISED NOTES		SIGNALIZATION DETAIL (Span Wire Installation With Communication Cable Crossing)
11-18-98	REVISED NOTES		
3-21-92	ISSUED		