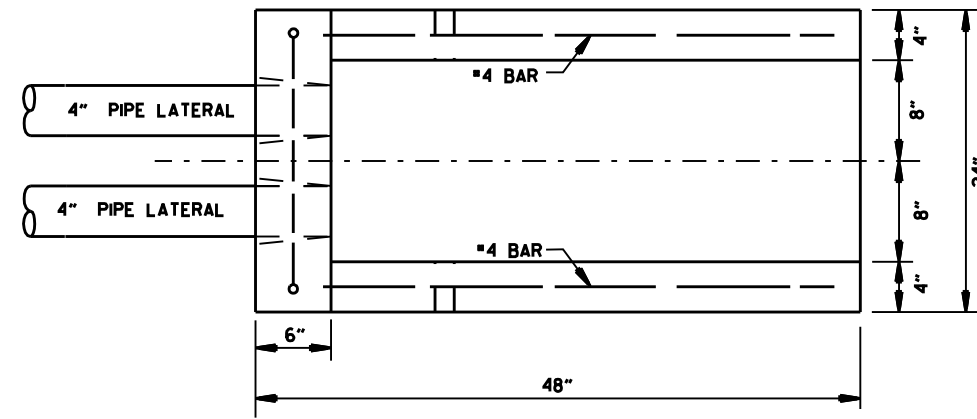
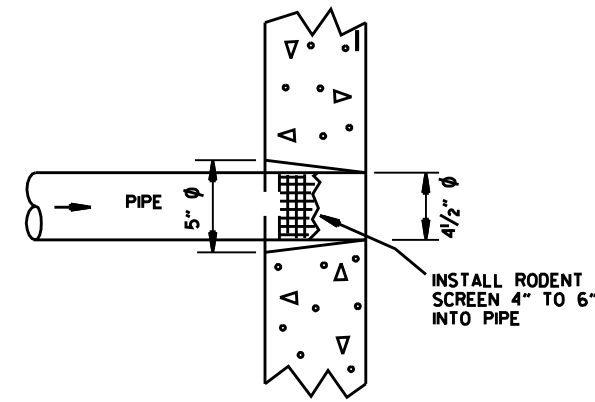


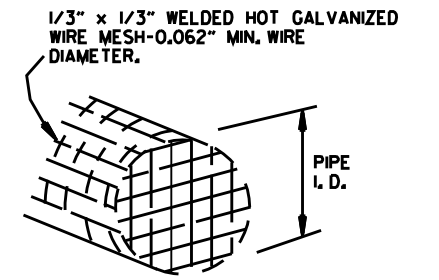
NOTE:  
 1. GRANULAR BACKFILL TO BE SUBSIDIARY TO PIPE UNDERDRAIN.  
 2. UNLESS OTHERWISE SPECIFIED ON THE PLANS, THE UNDERDRAIN COVER SHALL BE THOROUGHLY COMPACTED EARTH AND SHALL BE SUBSIDIARY TO PIPE UNDERDRAIN.  
 3. GRANULAR MATERIAL SHALL BE WRAPPED WITH GEOTEXTILE FABRIC, LAP FABRIC 12" OR THE WIDTH OF THE TRENCH AT THE TOP.



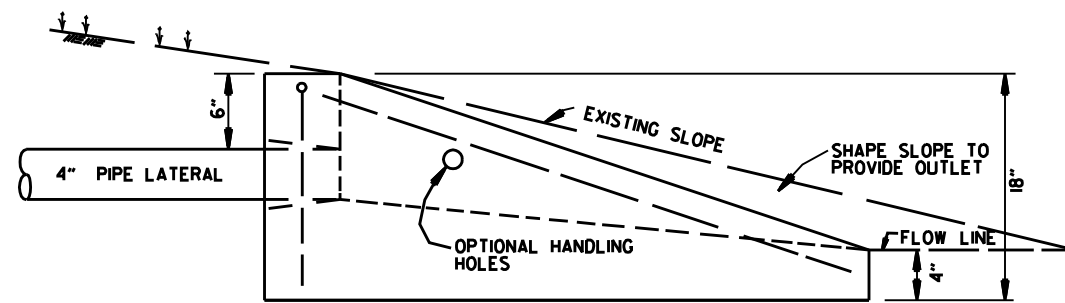
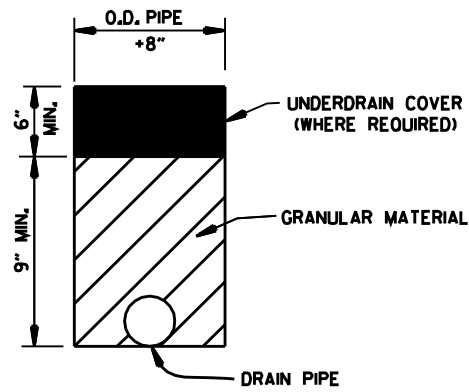
PLAN VIEW



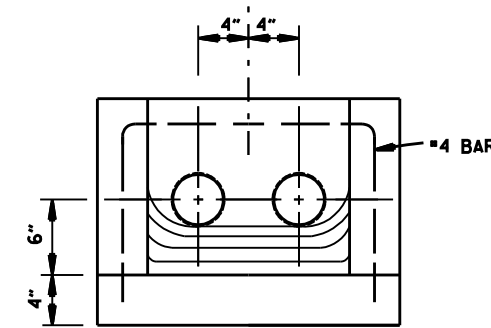
DETAIL OF HOLE FOR 4" PIPE



DETAIL OF RODENT SCREEN



SIDE VIEW

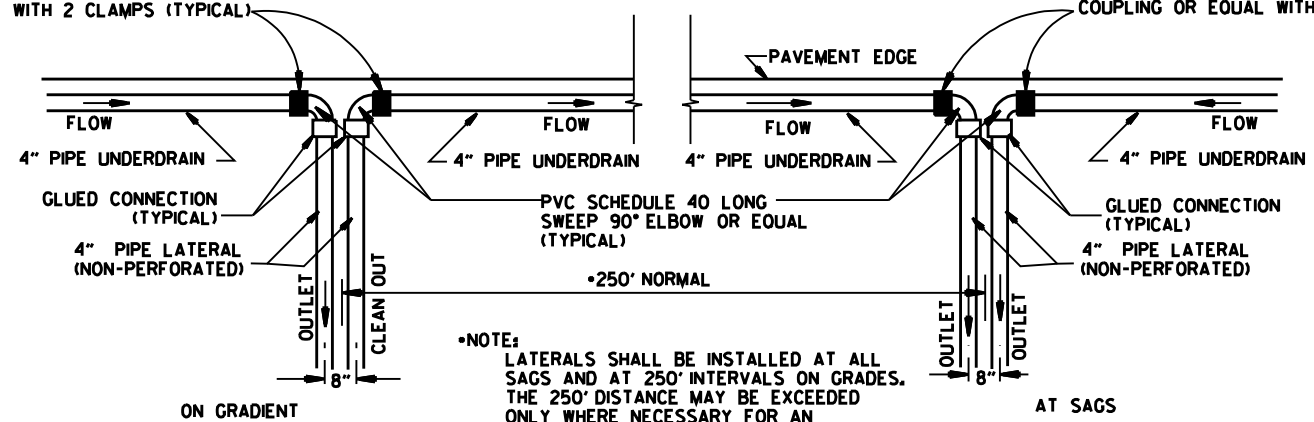


FRONT VIEW

FERNCO 1056-44 (4" CI/PLASTIC) OR  
 FERNCO 1051-44 (4" AC/DIOR 4" CI/PLASTIC)  
 COUPLING OR EQUAL WITH 2 CLAMPS (TYPICAL)

UNDERDRAIN OUTLET PROTECTORS

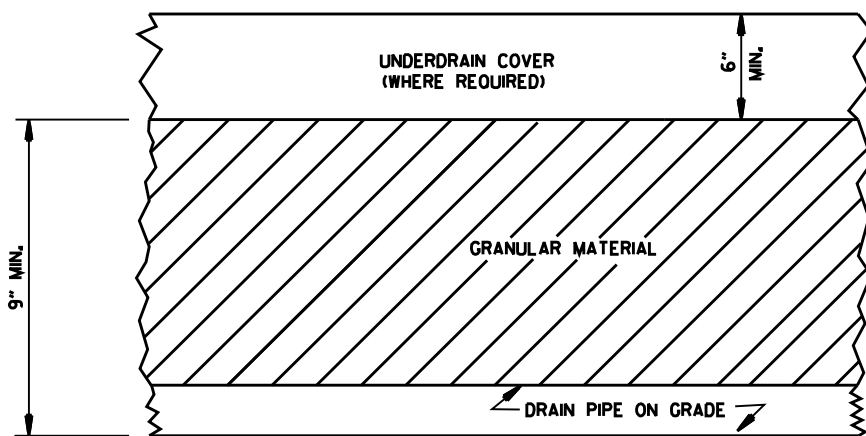
FERNCO 1056-44 (4" CI/PLASTIC) OR  
 FERNCO 1051-44 (4" AC/DIOR 4" CI/PLASTIC)  
 COUPLING OR EQUAL WITH 2 CLAMPS (TYPICAL)



\*NOTE:  
 LATERALS SHALL BE INSTALLED AT ALL SAGS AND AT 250' INTERVALS ON GRADES. THE 250' DISTANCE MAY BE EXCEEDED ONLY WHERE NECESSARY FOR AN ACCEPTABLE OUTLET.

DETAIL OF PIPE UNDERDRAIN LATERALS WHEN PLACED ALONG PAVEMENT EDGE

NOTE: PVC PIPE FOR LATERALS SHALL MEET THE REQUIREMENTS OF ASTM D 1785 (LATEST REVISION) FOR SCHEDULE 40 PIPE.



DETAILS OF PIPE UNDERDRAIN

DATE	REVISION	DATE FILMED
4-10-03	REVISED NOTE 3	
1-12-00	REVISED DETAIL OF UNDERDRAIN LATERALS	
11-18-98	REVISED NOTE	
10-18-96	REVISED MIN. DEPTH & GEOTEXTILE FABRIC	
4-26-96	ADDED LATERAL NOTE: 5 1/2" TO 5"	
11-22-95	REVISED LATERALS	
7-20-95	REVISED LATERALS & ADDED NOTE	
11-3-94	REVISED FOR DUAL LATERALS	11-3-94
10-1-92	SUBSTITUTED GEOTEXTILE	10-1-92
8-15-91	ADDED POLYETHYLENE PIPE	8-15-91
11-8-90	DELETED ALTERNATE NOTE	11-8-90
1-25-90	ADDED 4" SNAP ADAPTER	1-25-90
11-30-89	DEL. (SUBGRADE); ADDED (WHERE REQUIRED)	11-30-89
7-15-88	ISSUED P.L.M.	647-7-15-88

ARKANSAS STATE HIGHWAY COMMISSION

DETAILS OF PIPE UNDERDRAIN

STANDARD DRAWING PU-1