

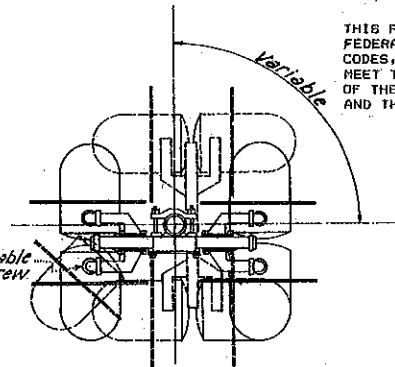
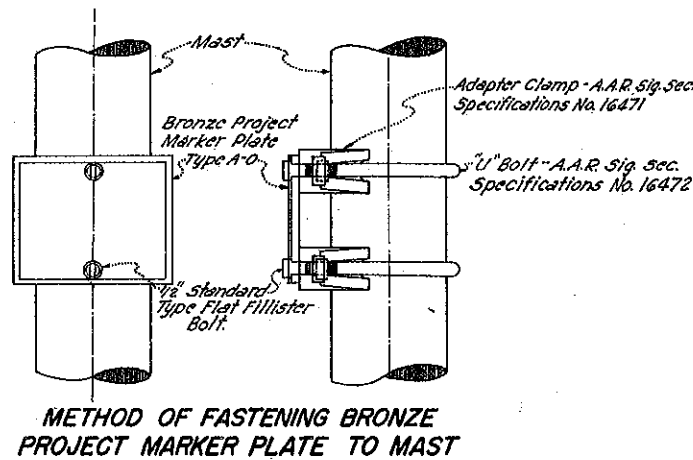
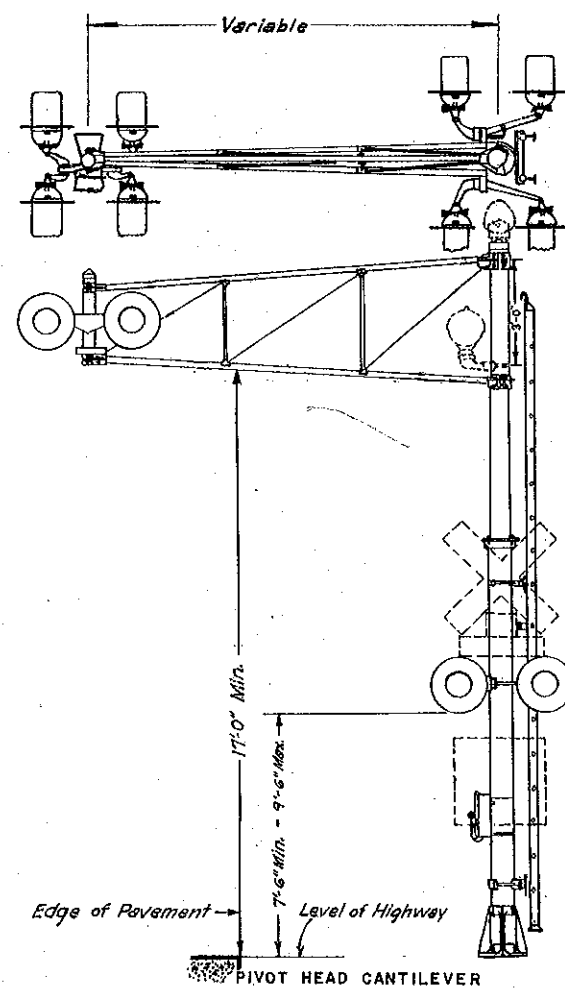
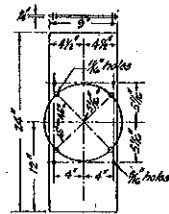
THIS FACILITY SHALL COMPLY WITH APPLICABLE  
 FEDERAL, STATE, AND LOCAL LAWS, REGULATIONS,  
 CODES, AND STANDARDS AND SHOULD, AS A MINIMUM,  
 MEET THE SPECIFICATIONS AND DESIGN STANDARDS  
 OF THE AMERICAN RAILWAY ENGINEERING ASSOCIATION  
 AND THE ASSOCIATION OF AMERICAN RAILROADS.

A.A.R. Dwg. #16421  
 RAILROAD CROSSING SIGN



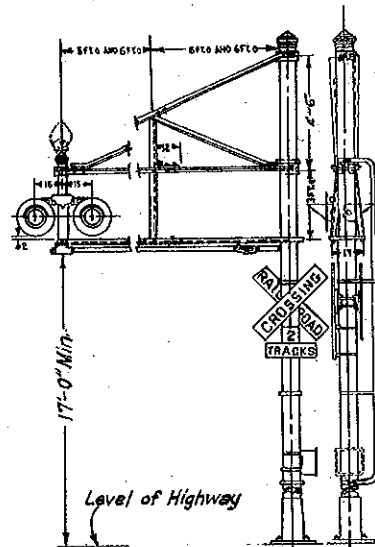
**ALTERNATE TYPE  
 90° CROSSING SIGN  
 REFLECTOR TYPE**

For Details See  
 A.A.R. Signal Section Specifications  
 No. 1642-B  
 (To Be Used When Specified  
 on Plans)

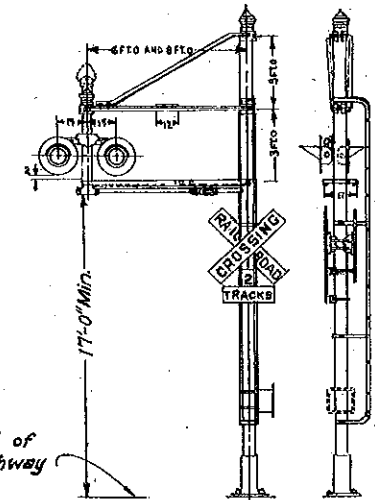


Flashing lights adjustable  
 individually by set screw  
 on pipe fitting.

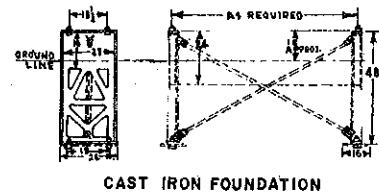
Position of ball  
 when required.



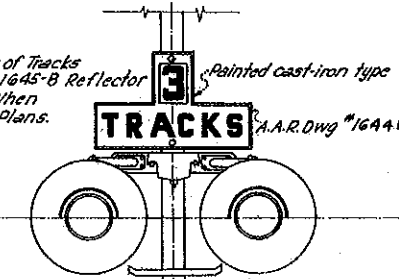
10 to 12 ft. STEEL CANTILEVER



6 to 8 ft. STEEL CANTILEVER



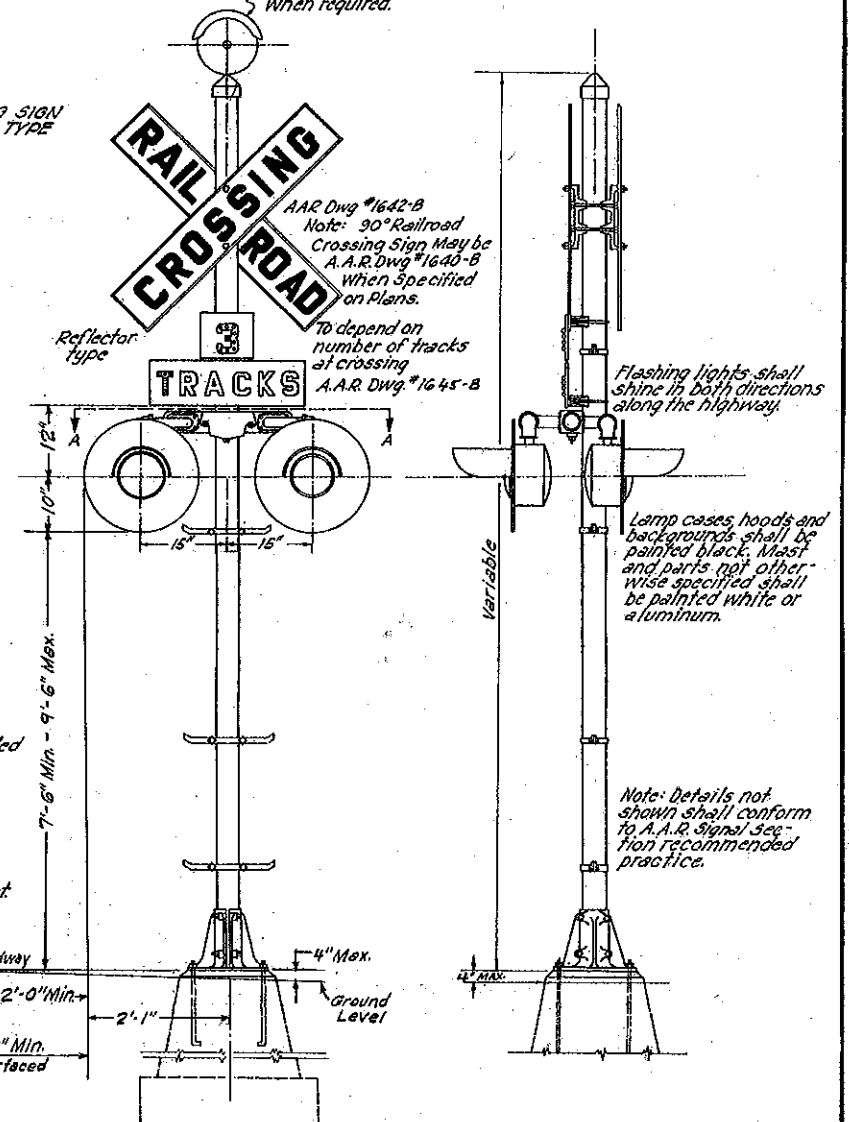
Note: Number of Tracks  
 sign may be 1645-B Reflector  
 button type, when  
 specified on Plans.



90° CROSSING SIGN  
 CAST IRON TYPE

Note: Details not shown  
 shall conform to A.A.R.  
 Signal Section recommended  
 practice.

ALTERNATE SIGN TYPES



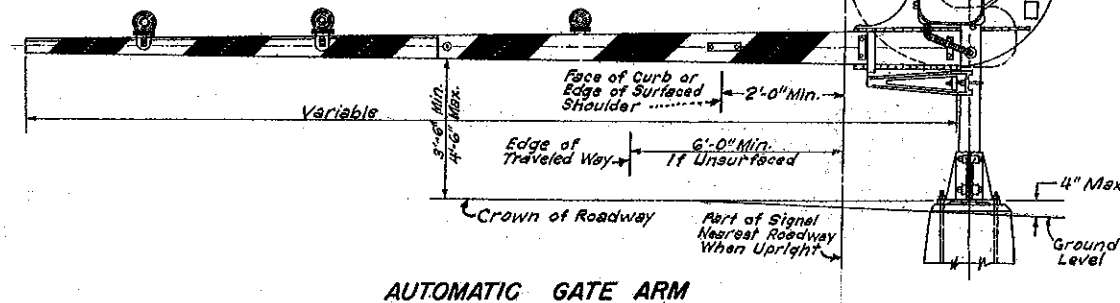
A.A.R. Dwg. #1642-B  
 Note: 90° Railroad  
 Crossing Sign may be  
 A.A.R. Dwg. #1640-B  
 when specified  
 on Plans.

To depend on  
 number of tracks  
 at crossing  
 A.A.R. Dwg. #1645-B

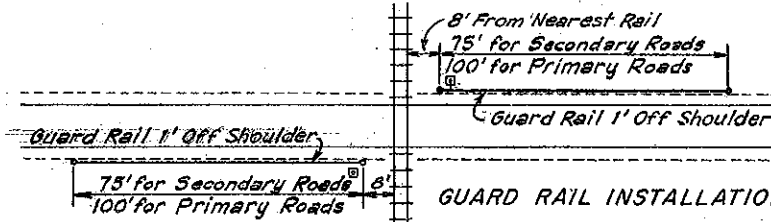
Flashing lights shall  
 shine in both directions  
 along the highway.

Lamp cases, hoods and  
 backgrounds shall be  
 painted black. Mast  
 and parts not other-  
 wise specified shall  
 be painted white or  
 aluminum.

Note: Details not  
 shown shall conform  
 to A.A.R. Signal Sec-  
 tion recommended  
 practice.



NOTE:  
 GUARD RAIL TO BE INSTALLED BY STATE  
 FORCES OR OTHERS WHEN DESIGN SPEED  
 IS 50 MPH OR GREATER AND THE ADT  
 IS 750 OR GREATER, OR AS DIRECTED  
 BY THE ENGINEER.



DATE	REVISION	DATE FILMED
7-14-78	GR Installation & Note Added	754-7-14-78
10-1-78	Governing Specifications Revised	801-10-1-78
6-10-75	Governing Specifications Added	903-6-10-75
10-25-74	Clearance Distance Revised	743-10-25-74
1-12-73	Min Changed on Cantilever	638-2-13-73
6-3-70	Added Guard Fence Note	673-6-15-70
12-5-69	Added Guard Fence Installation	783-12-5-69
9-10-69	Redrawn	

ARKANSAS STATE HIGHWAY COMMISSION  
 RAILROAD-HIGHWAY GRADE CROSSING  
 SIGNALS (FLASHING LIGHT TYPE)