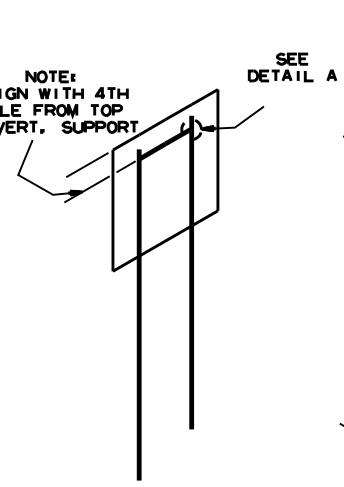
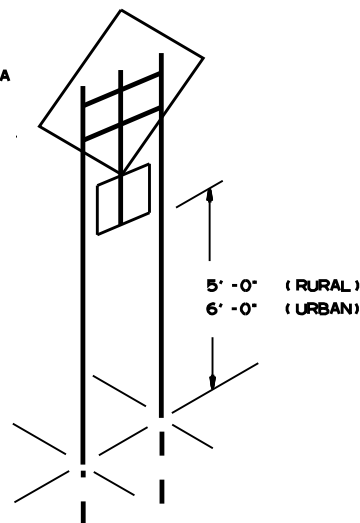


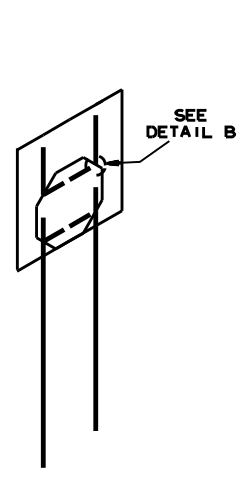
U-1



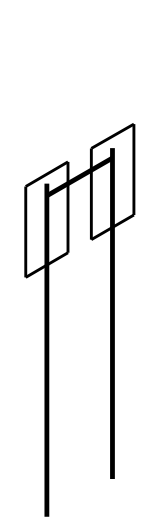
U-2



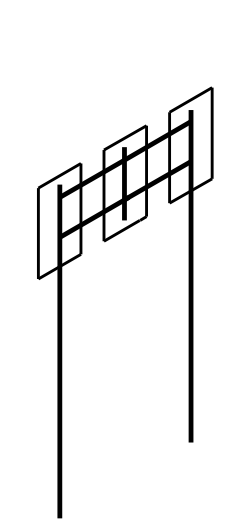
U-2 (A)



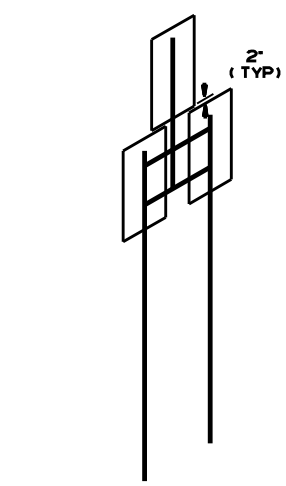
U-2 (B)



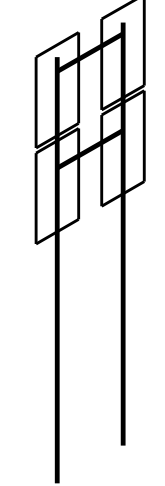
U-2 (1)



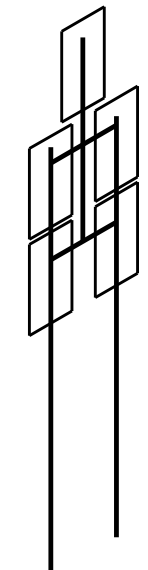
U-2 (2)



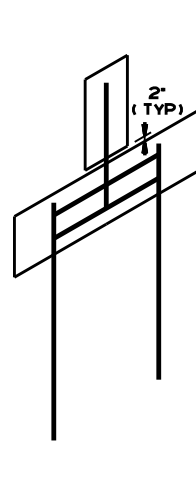
U-2 (3)



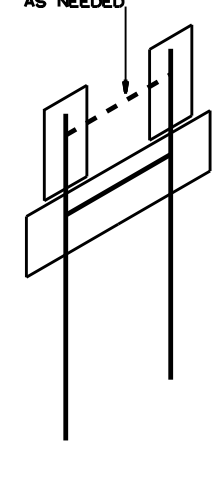
U-2 (4)



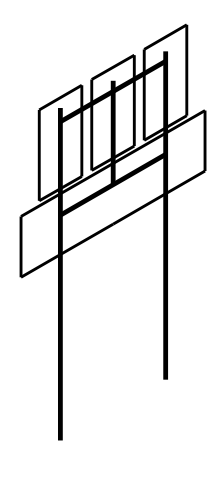
U-2 (5)



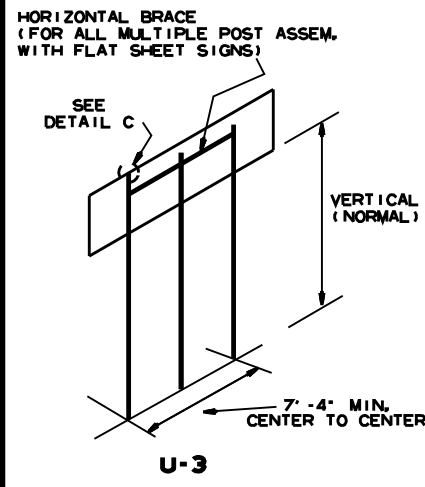
U-2 (6)



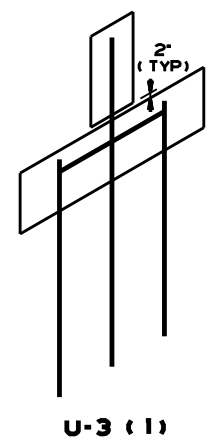
U-2 (7)



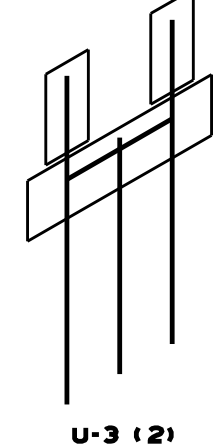
U-2 (8)



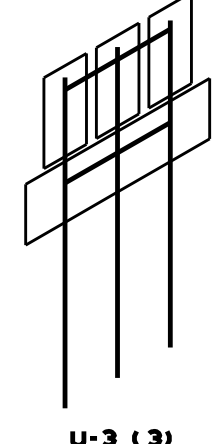
U-3



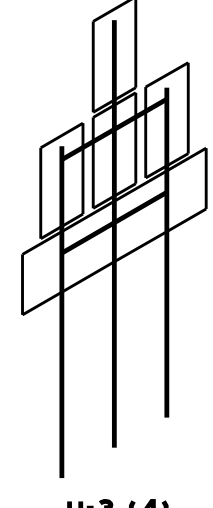
U-3 (1)



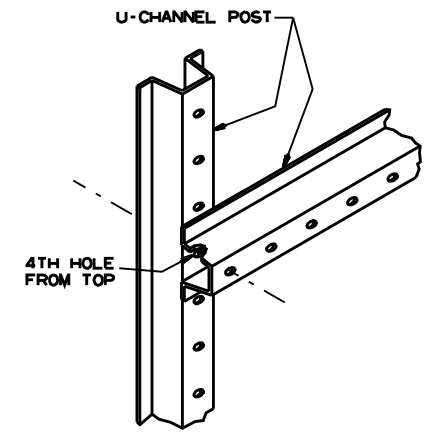
U-3 (2)



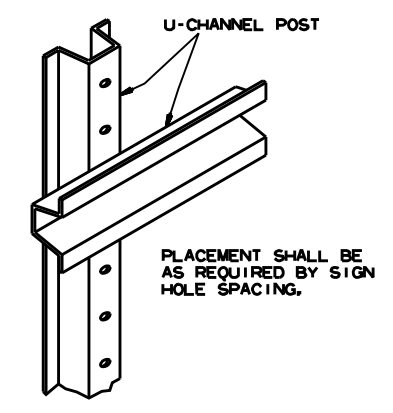
U-3 (3)



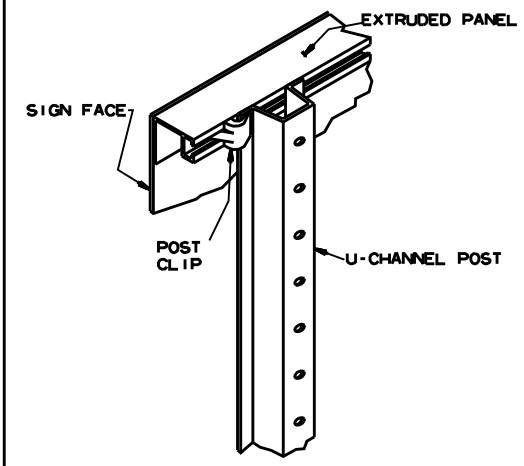
U-3 (4)



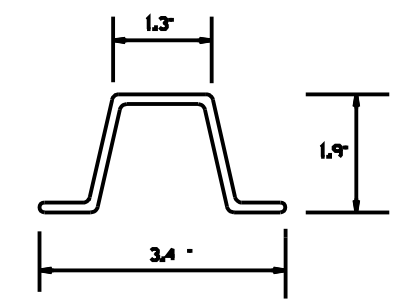
DETAIL A
SHOWING HORIZONTAL BRACE



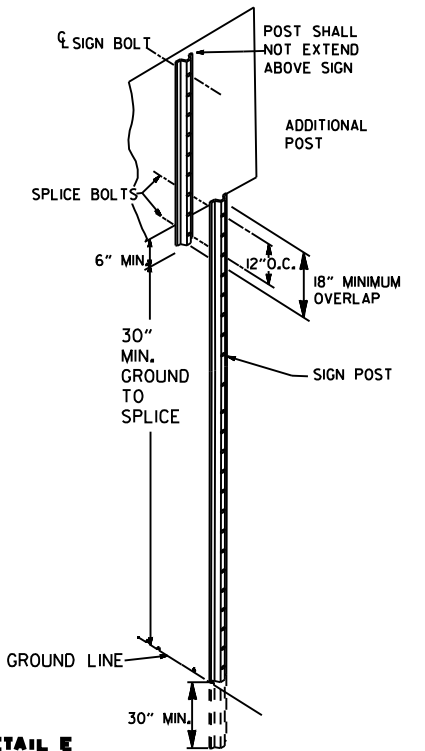
DETAIL B
SHOWING BACK-TO-BACK INSTALLATION



DETAIL C
SHOWING GUIDE SIGN MOUNTING WITH EXTRUDED PANELS



DETAIL D
(3 LB. U-CHANNEL POST)



DETAIL E

NOTES:
SIGNS AT LEAST 8' IN LENGTH MAY BE INSTALLED ON THREE 3 LB. POST, IN NO CASE SHALL THERE BE MORE THAN TWO 3 LB. POSTS WITHIN A 7' PATH.
SPLICES NECESSARY TO ATTAIN PROPER MOUNTING HEIGHT SHALL BE AS SHOWN IN DETAIL (E).
NORMAL INSTALLATIONS WILL REQUIRE 1/4" DIA. CARRIAGE BOLTS TO MOUNT SIGNS TO POST AND 5/16" DIA. CARRIAGE BOLTS TO ASSEMBLE THE VARIOUS POST SUPPORTS.
ALL SIGN POSTS SHALL BE PLUMB.

DATE	REVISION	FILMED
10-9-03	REMOVED ROUND POST & REVISED SPACING	
10-12-95	MOVED UPPER SPLICE	
6-8-95	REVISED SPLICE DETAIL	6-8-95
2-2-95	REDRAWN	2-2-95

ARKANSAS STATE HIGHWAY COMMISSION
U-CHANNEL POST ASSEMBLIES
STANDARD DRAWING SHS-2