

STEEL SCHEDULE

BAR	NUMBER	LENGTH	SPACING
"a"	11	6'-0"	5"
"b"	6	6'-0"	10"
"c"	16	5'-1"	12"
"d"	16	5'-0"	12"

QUANTITIES
 CONCRETE 3.40 CU. YDS.
 REINFORCING STEEL 176 LB.

GENERAL NOTE:
 THE PAY ITEMS FOR REINFORCED CONCRETE SPRING BOXES SHALL BE FOR THE QUANTITIES OF CONCRETE OF THE CLASS SPECIFIED, REINFORCING STEEL, EXCAVATION FOR STRUCTURES AND 18" R.C. PIPE CULVERT.

REINFORCED CONCRETE SPRING BOX

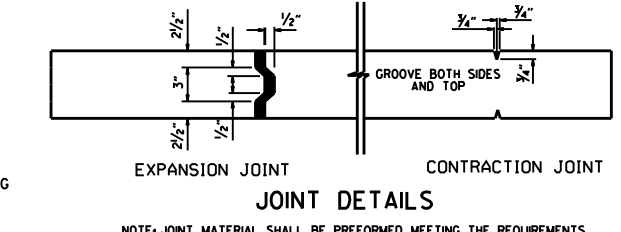
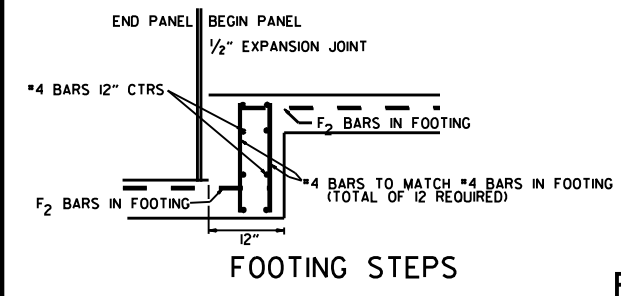
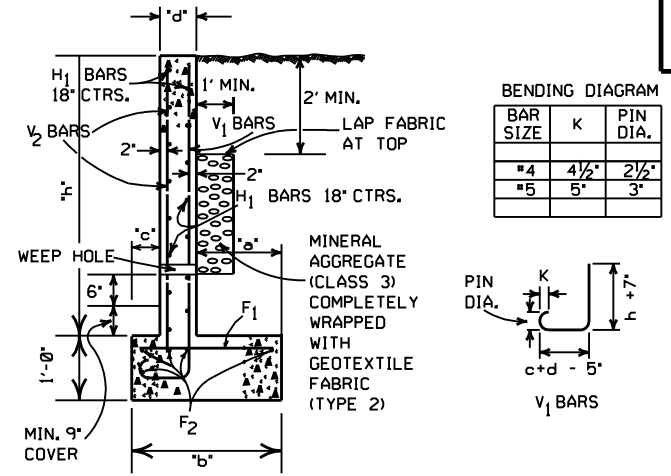
GENERAL NOTES

THE PAY ITEMS FOR THE CONSTRUCTION OF REINFORCED CONCRETE RETAINING WALL SHALL BE FOR THE QUANTITIES OF CONCRETE OF THE CLASS SPECIFIED, REINFORCING STEEL AND EXCAVATION FOR STRUCTURES.

MINERAL AGGREGATE WRAPPED WITH GEOTEXTILE FABRIC (CONTINUOUS) TO BE PLACED 1'-0" IN WIDTH AND 1'-0" IN HEIGHT AS A SUBSIDIARY ITEM TO THE VARIOUS PAY ITEMS.

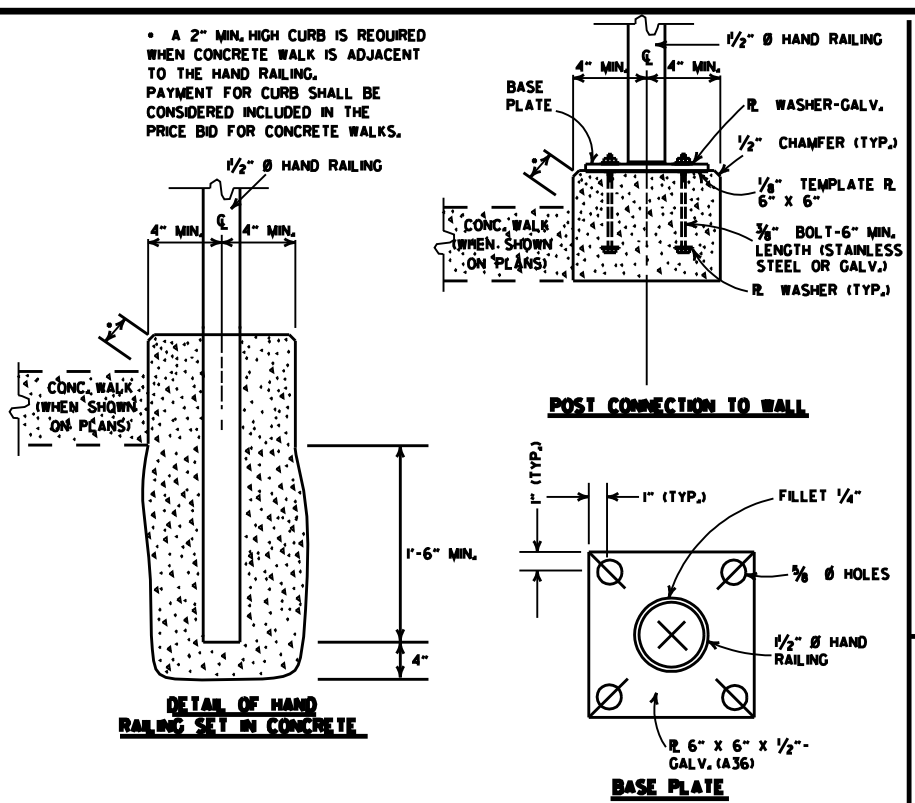
3" WEEP HOLES (MAX. SPACING 10'-0" CTRS.) TO BE PLACED WHERE SPECIFIED BY THE ENGINEER. THE CONTRACTOR WILL BE REQUIRED TO PLACE CONTRACTION JOINTS ON 20' CENTERS AND EXPANSION JOINTS ON 60' CENTERS.

ALL EXPOSED EDGES TO BE CHAMFERED 3/4".

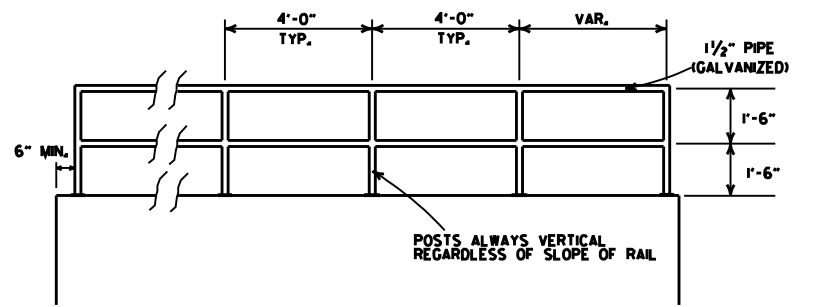


REINFORCED CONCRETE RETAINING WALL

NOTE: JOINT MATERIAL SHALL BE PERFORMED MEETING THE REQUIREMENTS OF SUBSECTION 501.02(h) FOR TYPE 2

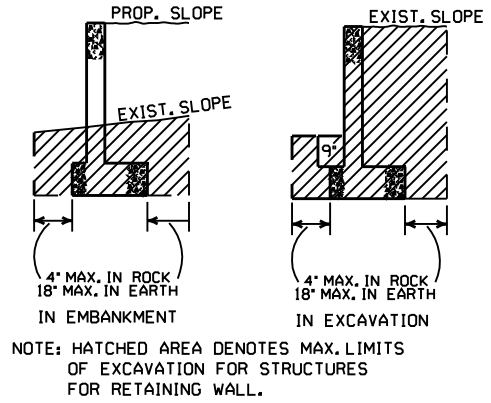


HAND RAILING DETAILS

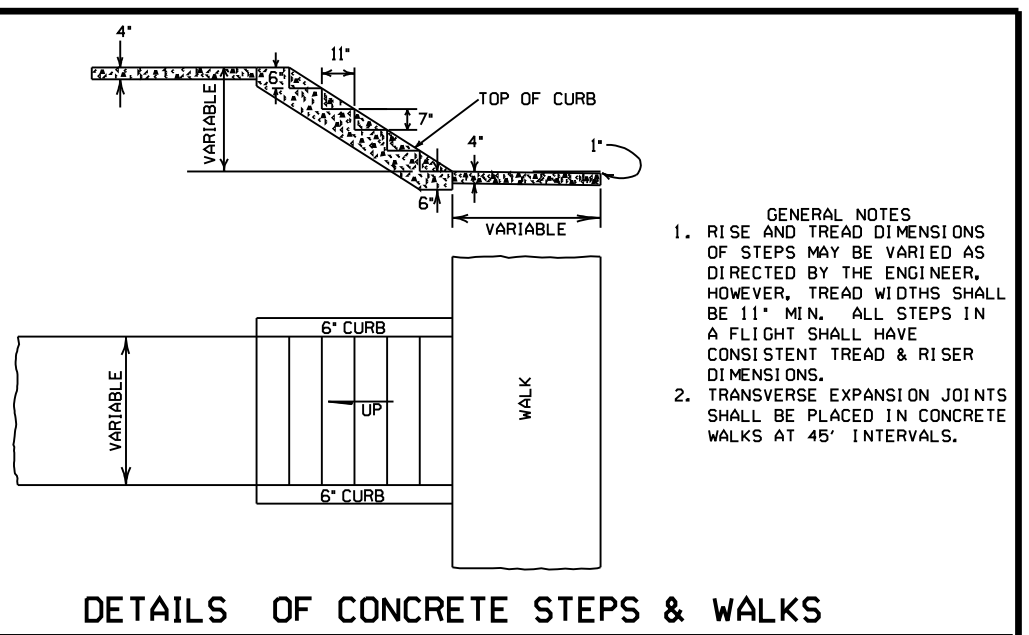


STEEL SCHEDULE

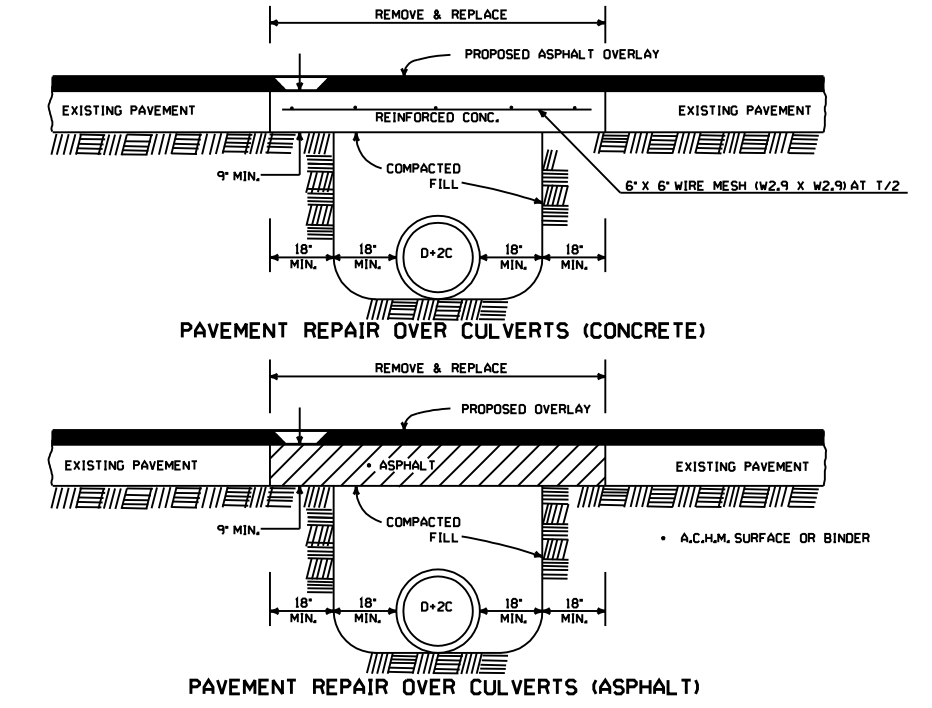
"c"	"d"	"h"	"a"	"b"	V1 BARS		F1 BARS		H1	V2	F2
					SIZE	SPACING	SIZE	SPACING			
8"	8"	1'-0"	8"	2'-0"	#4	12"	#4	18"	18"	18"	5
8"	8"	2'-0"	8"	2'-0"	#4	12"	#4	18"	18"	18"	5
8"	8"	3'-0"	8"	2'-0"	#4	12"	#4	18"	18"	18"	5
8"	8"	4'-0"	1'-2"	2'-6"	#4	12"	#4	12"	18"	18"	5
8"	8"	5'-0"	1'-8"	3'-0"	#4	9"	#4	9"	18"	18"	5
8"	8"	6'-0"	2'-2"	3'-6"	#4	6"	#4	6"	18"	18"	6
12"	8"	7'-0"	2'-4"	4'-0"	#4	8"	#4	8"	18"	18"	6
12"	8"	8'-0"	2'-10"	4'-6"	#4	6"	#4	6"	18"	18"	6
15"	10"	9'-0"	2'-11"	5'-0"	#4	5"	#4	5"	18"	18"	6
17"	10"	10'-0"	3'-3"	5'-6"	#5	6"	#5	6"	18"	18"	7



NOTE: HATCHED AREA DENOTES MAX. LIMITS OF EXCAVATION FOR STRUCTURES FOR RETAINING WALL.



DETAILS OF CONCRETE STEPS & WALKS



DETAIL SHOWING REPAIR OF EXISTING PAVEMENT AT CULVERT INSTALLATIONS

5-25-06	REVISED PVMT REPAIR OVER CULVERTS (CONC); REVISED REINFORCED CONC SPRING BOX		
10-9-03	REVISED PIPE RAILING DETAILS TO HAND RAILING DETAILS		
4-10-03	REVISED RETAINING WALL DRAWING		
8-22-02	ADDED HAND RAILING DETAIL		
11-16-01	REVISED PVMT REPAIR OVER CULVERTS (CONC); CORRECTED SPELLING IN GENERAL NOTES		
11-18-98	ADDED GENERAL NOTES TO CONCRETE STEPS & WALKS		
7-02-98	ENLARGED PIPE		
4-03-97	ADDED NOTE TO STEEL BAR SCHED.		
10-18-96	CORRECTED SPELLING		
4-26-96	ADD WEEP HOLE; REV. JOINT SPACING IN RET. WALL		
6-2-94	CHANGED CONST. TO CONTRACTION JOINT		
10-1-92	CHANGED MESH FABRIC TO WIRE MESH	10-1-92	
8-15-91	DELETED HOWL MODIFICATION DETAIL	8-15-91	
11-8-90	DELETED COLD MIX FROM CULV'T. REPAIR	11-8-90	
11-30-89	REV. RETAINING WALL STEEL SCHEDULE	11-30-89	
11-17-88	V1 BARS BEHIND ARROW	665-11-17-88	
7-15-88	REV. PAVEMENT REPAIR	649-7-15-88	
	ADDED HDWL. MODS. DEL. PIPE UNDERDRAINS		
11-1-84	REV. TRENCH FOR PIPE UNDERDRAIN	510-11-1-84	
1-4-83	ELIMINATED CONC. CLASS & ADDED CHAMFER NOTE	682-1-4-83	
3-2-81	SPELLING OF "UNDERDRAIN"	721-3-2-81	
4-20-79	REV. UNDERDRAIN DET & PAVEMENT REPAIR	674-4-20-79	
2-2-76	12" MIN. GRAN. MAT'L. OVER PIPE	919-2-2-76	
4-10-75	REM. SPECS. FOR GRAN. MAT'L.	568-4-10-75-853	
5-22-74	GRANULAR MAT'L. TO BE SB-3	567-5-22-74-740	
10-2-72	REVISED AND REDRAWN	564-10-16-72	
DATE	REVISION	DATE FILMED	

ARKANSAS STATE HIGHWAY COMMISSION

DETAILS OF SPECIAL ITEMS

STANDARD DRAWING SI - 1