

# INDEX

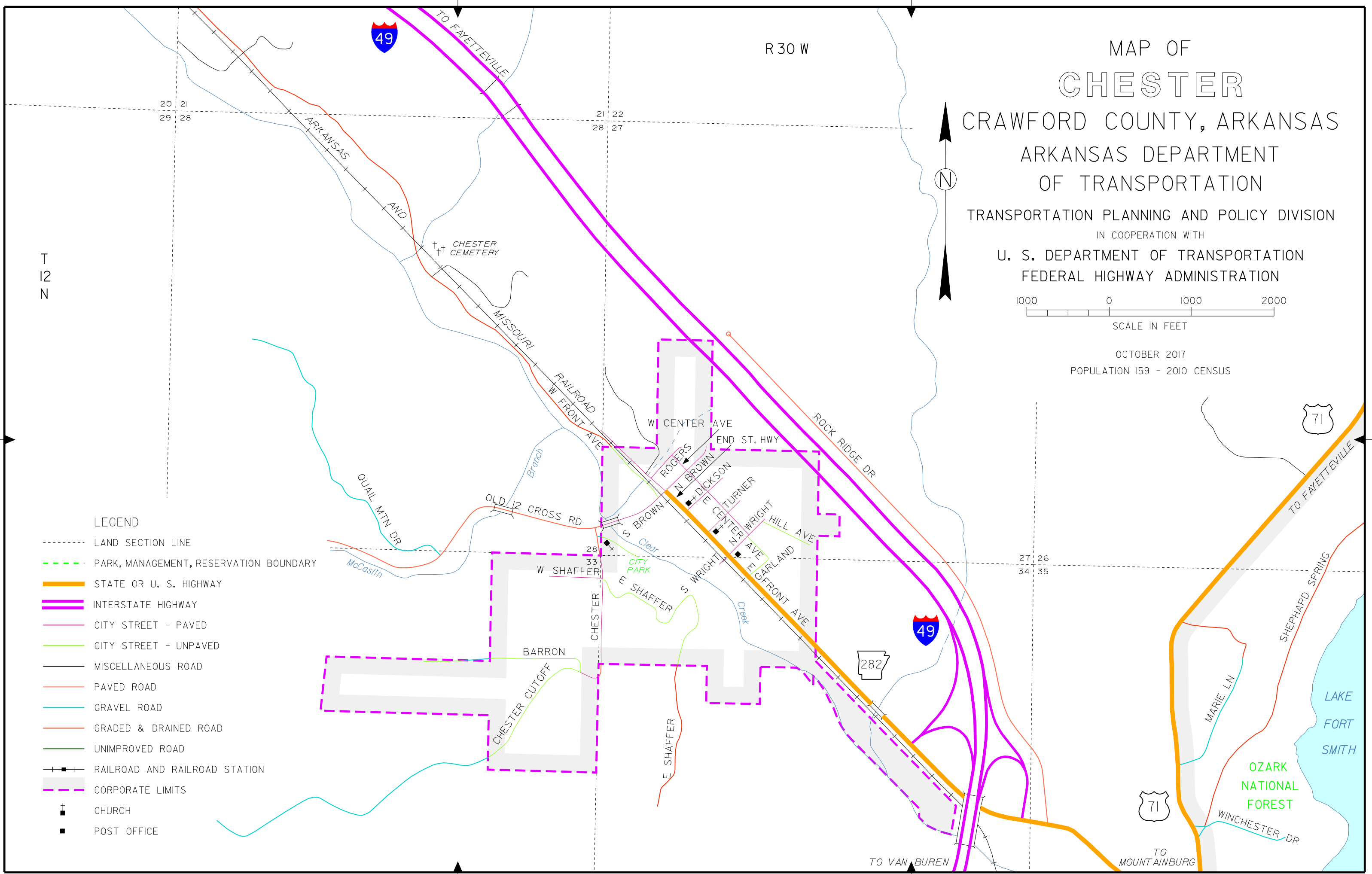
BARRON	B-2
CHESTER	B-2
CHESTER CUTOFF	B-2
DICKSON	B-2
E CENTER AVE	B-2
E FRONT AVE	B-2
E SHAFFER	B-2
GARLAND	B-2
HILL AVE	B-2
N BROWN	B-2
N WRIGHT	B-2
ROGERS	B-2
S BROWN	B-2
S WRIGHT	B-2
TURNER	B-2
W CENTER AVE	A-2
W FRONT AVE	A-2
W SHAFFER	B-2

A

T  
12  
N

B

- LEGEND
- LAND SECTION LINE
  - - - - - PARK, MANAGEMENT, RESERVATION BOUNDARY
  - STATE OR U. S. HIGHWAY
  - INTERSTATE HIGHWAY
  - CITY STREET - PAVED
  - CITY STREET - UNPAVED
  - MISCELLANEOUS ROAD
  - PAVED ROAD
  - GRAVEL ROAD
  - GRADED & DRAINED ROAD
  - UNIMPROVED ROAD
  - + - - - - RAILROAD AND RAILROAD STATION
  - CORPORATE LIMITS
  - † CHURCH
  - POST OFFICE



## MAP OF CHESTER CRAWFORD COUNTY, ARKANSAS

ARKANSAS DEPARTMENT  
OF TRANSPORTATION

TRANSPORTATION PLANNING AND POLICY DIVISION

IN COOPERATION WITH  
U. S. DEPARTMENT OF TRANSPORTATION  
FEDERAL HIGHWAY ADMINISTRATION



OCTOBER 2017  
POPULATION 159 - 2010 CENSUS

1

2