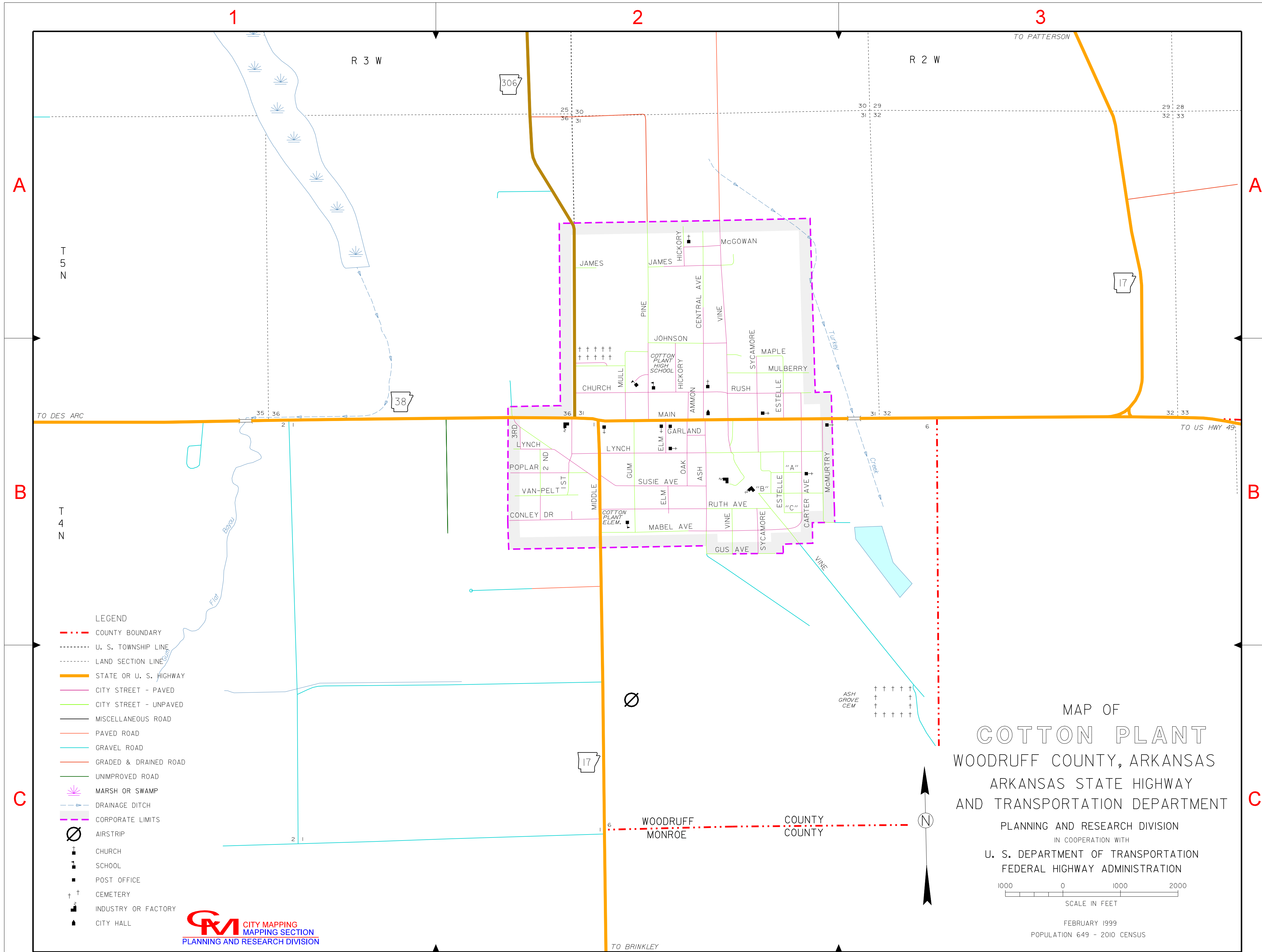


INDEX

- "A" B-2
- "B" B-2
- "C" B-2
- 1 ST B-2
- 2 ND B-2
- 3 RD B-2
- AMMON B-2
- ASH B-2
- CARTER AVE B-2
- CENTRAL AVE A-2
- CHURCH B-2
- CONLEY DR B-2
- ELM B-2
- ESTELLE B-2
- GARLAND B-2
- GUM B-2
- GUS AVE B-2
- HICKORY A-2
- HICKORY B-2
- JAMES A-2
- JOHNSON B-2
- LYNCH B-2
- MABEL AVE B-2
- MAIN B-2
- MAPLE B-2
- McGOWAN A-2
- McMURTRY B-2
- MIDDLE B-2
- MULBERRY B-2
- MULL B-2
- OAK B-2
- PINE A-2
- POPLAR B-2
- RUSH B-2
- RUTH AVE B-2
- SUSIE AVE B-2
- SYCAMORE B-2
- VAN-PELT A-2
- VINE B-2



- LEGEND**
- COUNTY BOUNDARY
 - U. S. TOWNSHIP LINE
 - LAND SECTION LINE
 - STATE OR U. S. HIGHWAY
 - CITY STREET - PAVED
 - CITY STREET - UNPAVED
 - MISCELLANEOUS ROAD
 - PAVED ROAD
 - GRAVEL ROAD
 - GRADED & DRAINED ROAD
 - UNIMPROVED ROAD
 - MARSH OR SWAMP
 - DRAINAGE DITCH
 - CORPORATE LIMITS
 - AIRSTRIP
 - ✚ CHURCH
 - ✚ SCHOOL
 - ✚ POST OFFICE
 - ✚ CEMETERY
 - ✚ INDUSTRY OR FACTORY
 - ✚ CITY HALL

MAP OF
COTTON PLANT
 WOODRUFF COUNTY, ARKANSAS
 ARKANSAS STATE HIGHWAY
 AND TRANSPORTATION DEPARTMENT
 PLANNING AND RESEARCH DIVISION
 IN COOPERATION WITH
 U. S. DEPARTMENT OF TRANSPORTATION
 FEDERAL HIGHWAY ADMINISTRATION

1000 0 1000 2000
 SCALE IN FEET

FEBRUARY 1999
 POPULATION 649 - 2010 CENSUS

