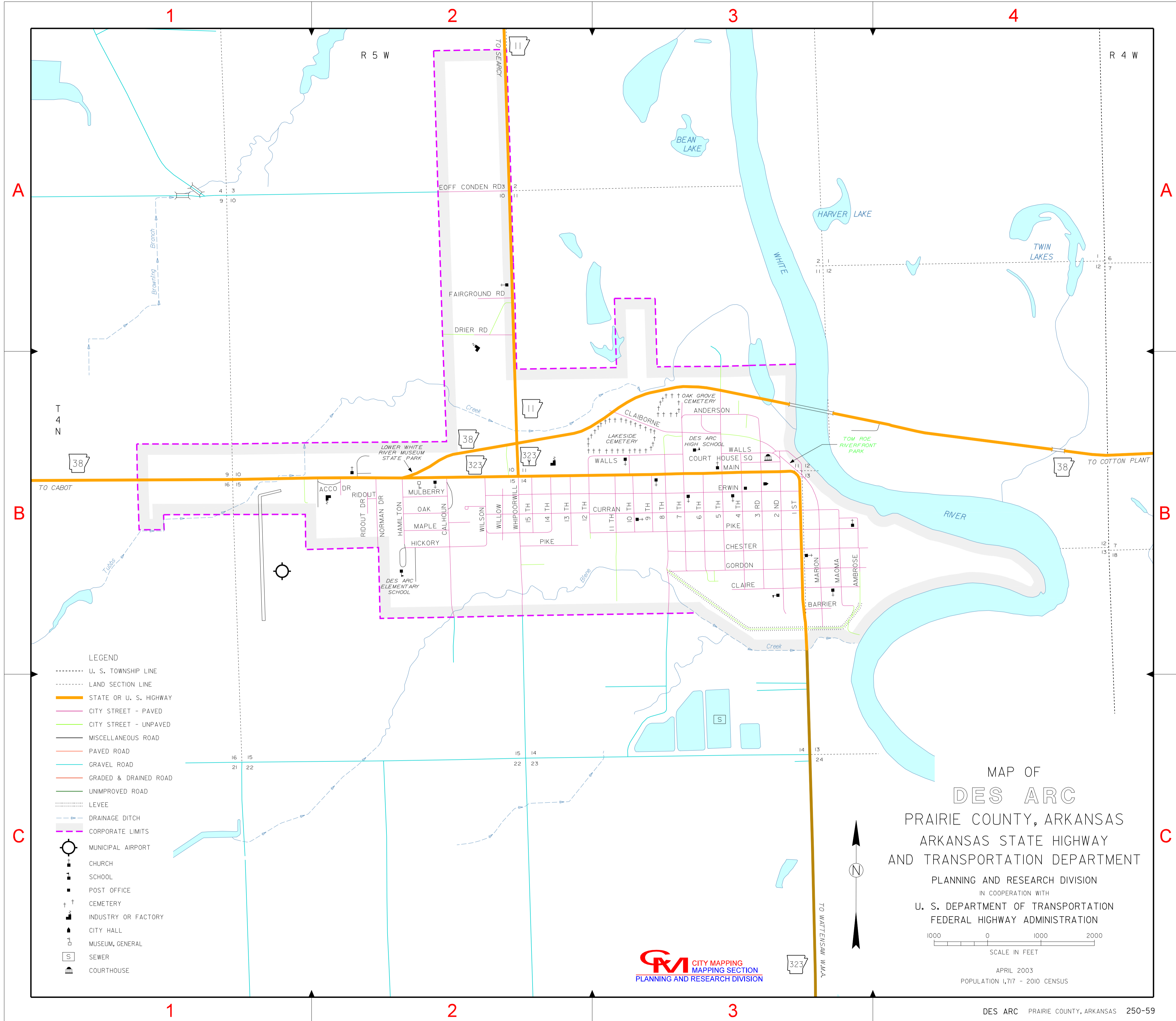


INDEX

1 ST	0-3
2 ND	0-3
3 RD	0-3
4 TH	0-3
5 TH	0-3
6 TH	0-3
7 TH	0-3
8 TH	0-3
9 TH	0-3
10 TH	0-3
11 TH	0-3
12 TH	0-3
13 TH	0-3
14 TH	0-3
15 TH	0-3
ACCO DR	0-3
AMBROSE	0-3
ANDERSON	0-3
BARRIER	0-3
CALHOUN	0-3
CHESTER	0-3
CLAIBORNE	0-3
CLAIRE	0-3
COURT HOUSE SQ	0-3
CURRAN	0-3
DRIER RD	A-2
EOFF CONDEN RD	A-2
ERWIN	0-3
FAIRGROUND RD	A-2
GORDON	0-3
HAMILTON	0-3
HICKORY	0-3
MAIN	0-3
MAOMA	0-3
MAPLE	0-3
MARION	0-3
MULBERRY	0-3
NORMAN DR	0-3
OAK	0-3
PIKE	0-3
PIKE	0-3
RIDOUT	0-3
RIDOUT DR	0-3
WALLS	0-3
WHIPOORWILL	0-3
WILLOW	0-3
WILSON	0-3



- LEGEND**
- U. S. TOWNSHIP LINE
 - LAND SECTION LINE
 - STATE OR U. S. HIGHWAY
 - CITY STREET - PAVED
 - CITY STREET - UNPAVED
 - MISCELLANEOUS ROAD
 - PAVED ROAD
 - GRAVEL ROAD
 - GRADED & DRAINED ROAD
 - UNIMPROVED ROAD
 - LEVEE
 - - - DRAINAGE DITCH
 - - - CORPORATE LIMITS
 - MUNICIPAL AIRPORT
 - ✝ CHURCH
 - ▣ SCHOOL
 - POST OFFICE
 - + + CEMETERY
 - INDUSTRY OR FACTORY
 - CITY HALL
 - ▣ MUSEUM, GENERAL
 - ▣ SEWER
 - COURTHOUSE

MAP OF
DES ARC
 PRAIRIE COUNTY, ARKANSAS
 ARKANSAS STATE HIGHWAY
 AND TRANSPORTATION DEPARTMENT
 PLANNING AND RESEARCH DIVISION
 IN COOPERATION WITH
 U. S. DEPARTMENT OF TRANSPORTATION
 FEDERAL HIGHWAY ADMINISTRATION

1000 0 1000 2000
 SCALE IN FEET

APRIL 2003
 POPULATION 1,717 - 2010 CENSUS

