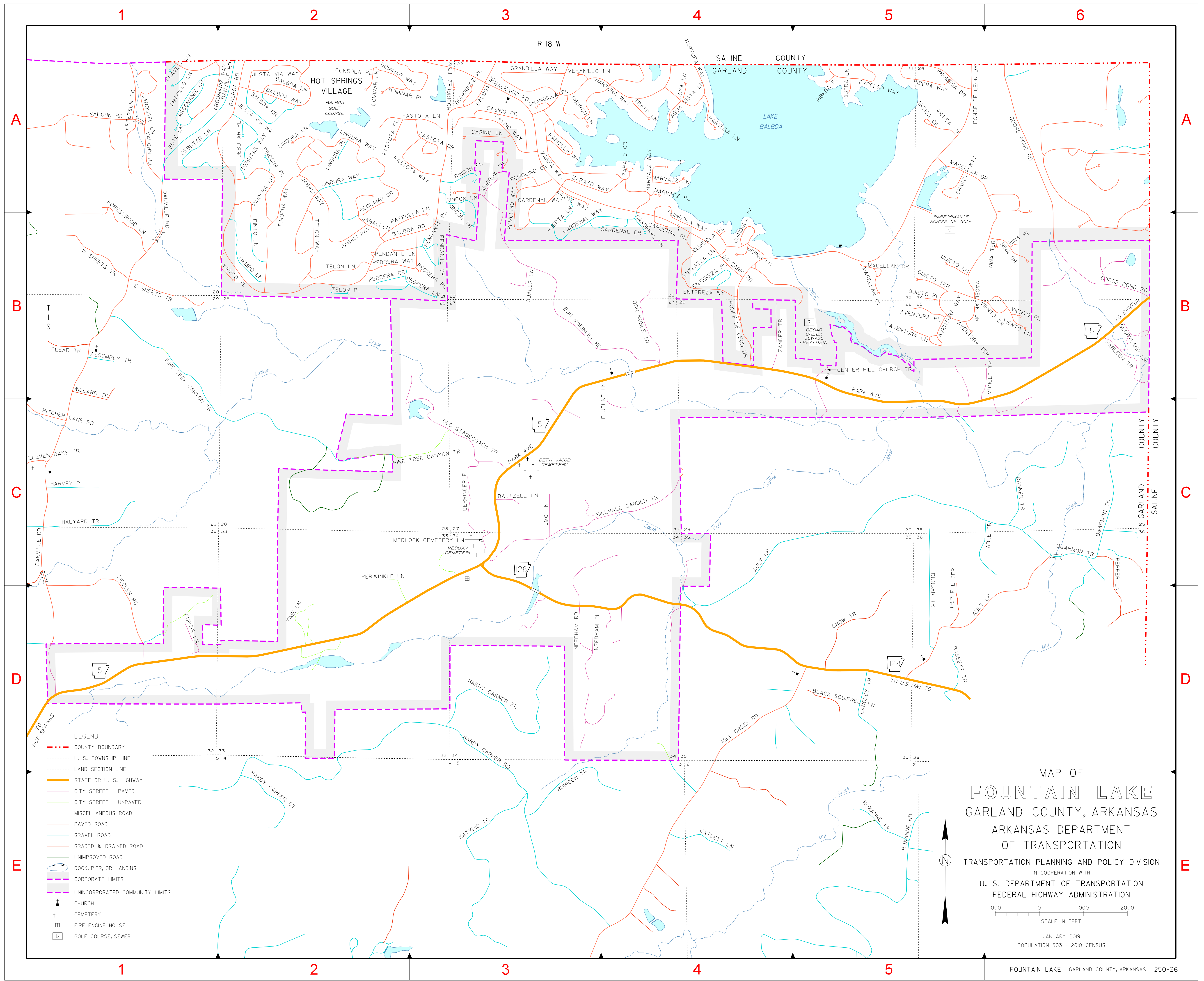


**INDEX**

- BALTZELL LN C-3
- BUD MCKINLEY RD B-3
- CENTER HILL CHURCH TR B-3
- CURTIS LN C-1
- DERRINGER PL C-3
- DON NOBLE TR B-4
- GLORYLAND LN B-6
- GOOSE POND RD B-6
- HARLEEN TR B-6
- HILL VALE GARDEN TR C-3
- JMC LN C-3
- LE JEUNE LN C-3
- MEDLOCK CEMETERY LN C-3
- MORROW TR A-3
- MUNGLE TR B-6
- NEEDHAM PL B-6
- NEEDHAM RD A-3
- OLD STAGECOACH TR A-3
- PARK AVE A-3
- PERIWINKLE LN C-3
- PINE TREE CANYON TR B-3
- QUALLS LN C-3
- TIME LN C-3
- ZANDER TR B-4



- LEGEND**
- COUNTY BOUNDARY
  - U. S. TOWNSHIP LINE
  - LAND SECTION LINE
  - STATE OR U. S. HIGHWAY
  - CITY STREET - PAVED
  - CITY STREET - UNPAVED
  - MISCELLANEOUS ROAD
  - PAVED ROAD
  - GRAVEL ROAD
  - GRADED & DRAINED ROAD
  - UNIMPROVED ROAD
  - DOCK, PIER, OR LANDING
  - CORPORATE LIMITS
  - UNINCORPORATED COMMUNITY LIMITS
  - ✠ CHURCH
  - †† CEMETERY
  - ⊞ FIRE ENGINE HOUSE
  - Ⓜ GOLF COURSE, SEWER

**MAP OF**  
**FOUNTAIN LAKE**  
 GARLAND COUNTY, ARKANSAS  
 ARKANSAS DEPARTMENT  
 OF TRANSPORTATION  
 TRANSPORTATION PLANNING AND POLICY DIVISION  
 IN COOPERATION WITH  
 U. S. DEPARTMENT OF TRANSPORTATION  
 FEDERAL HIGHWAY ADMINISTRATION

1000 0 1000 2000  
 SCALE IN FEET  
 JANUARY 2019  
 POPULATION 503 - 2010 CENSUS