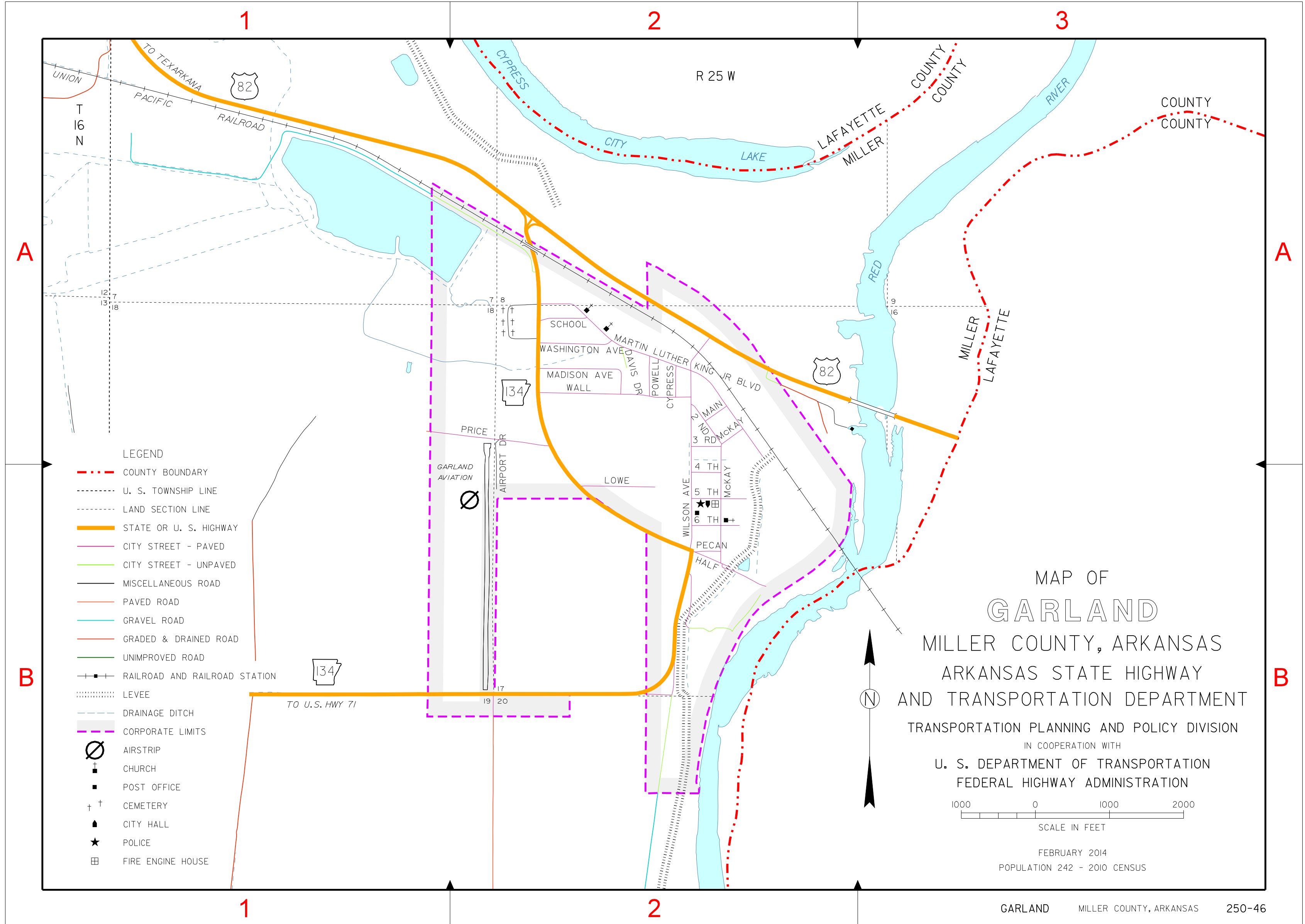


INDEX

- 2 ND B-2
- 3 RD B-2
- 4 TH B-2
- 5 TH B-2
- 6 TH B-2
- AIRPORT DR B-2
- CYPRESS B-2
- DAVIS DR B-2
- HALF B-2
- LOWE B-2
- MADISON AVE B-2
- MAIN B-2
- MARTIN LUTHER KING JR BLVD B-2
- McKAY B-2
- PECAN B-2
- POWELL B-2
- PRICE B-2
- SCHOOL C-2
- WALL B-2
- WASHINGTON AVE B-2
- WILSON AVE B-2



- LEGEND**
- - - - COUNTY BOUNDARY
 - - - - U. S. TOWNSHIP LINE
 - - - - LAND SECTION LINE
 - STATE OR U. S. HIGHWAY
 - CITY STREET - PAVED
 - CITY STREET - UNPAVED
 - MISCELLANEOUS ROAD
 - PAVED ROAD
 - GRAVEL ROAD
 - GRADED & DRAINED ROAD
 - UNIMPROVED ROAD
 - RAILROAD AND RAILROAD STATION
 - - - - LEVEE
 - - - - DRAINAGE DITCH
 - - - - CORPORATE LIMITS
 - Ø AIRSTRIP
 - + CHURCH
 - POST OFFICE
 - + † CEMETERY
 - ▲ CITY HALL
 - ★ POLICE
 - ⊞ FIRE ENGINE HOUSE

MAP OF
GARLAND
 MILLER COUNTY, ARKANSAS
 ARKANSAS STATE HIGHWAY
 AND TRANSPORTATION DEPARTMENT
 TRANSPORTATION PLANNING AND POLICY DIVISION
 IN COOPERATION WITH
 U. S. DEPARTMENT OF TRANSPORTATION
 FEDERAL HIGHWAY ADMINISTRATION



FEBRUARY 2014
 POPULATION 242 - 2010 CENSUS