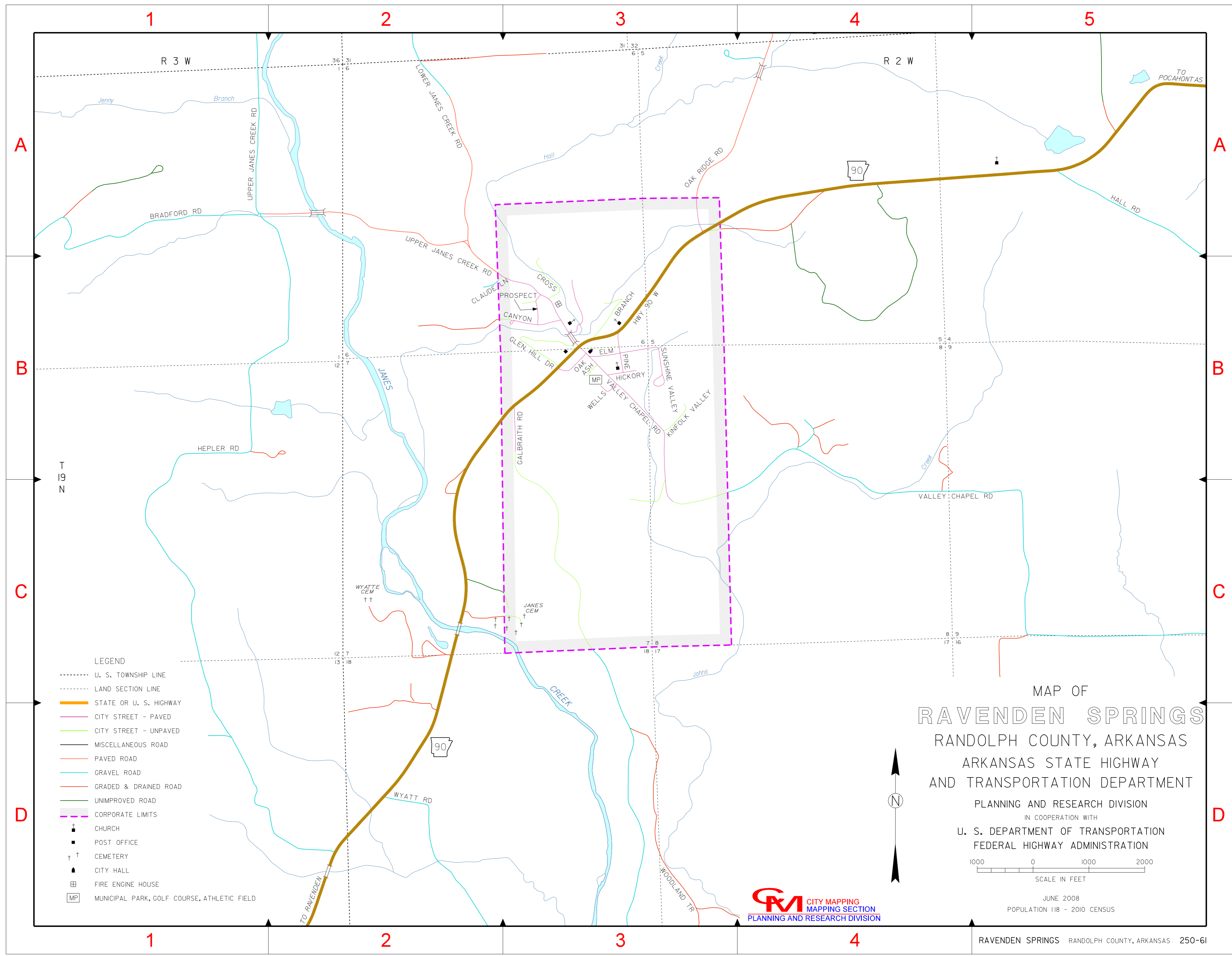


# INDEX

- ASH B-3
- BRANCH B-3
- CANYON B-3
- CLAUDE LN B-2
- CROSS B-3
- ELM B-3
- GALBRAITH RD B-3
- GLEN HILL DR B-3
- HICKORY B-3
- HWY 90 W B-3
- KINFOLK VALLEY B-3
- OAK B-3
- OAK RIDGE RD A-3
- PINE B-3
- PROSPECT B-3
- SUNSHINE VALLEY B-3
- UPPER JAMES CREEK RD B-2
- VALLEY CHAPEL RD B-3
- WELLS B-3



- LEGEND**
- U. S. TOWNSHIP LINE
  - LAND SECTION LINE
  - STATE OR U. S. HIGHWAY
  - CITY STREET - PAVED
  - CITY STREET - UNPAVED
  - MISCELLANEOUS ROAD
  - PAVED ROAD
  - GRAVEL ROAD
  - GRADED & DRAINED ROAD
  - UNIMPROVED ROAD
  - CORPORATE LIMITS
  - † CHURCH
  - POST OFFICE
  - †† CEMETERY
  - ▲ CITY HALL
  - ⊞ FIRE ENGINE HOUSE
  - ⊞ MUNICIPAL PARK, GOLF COURSE, ATHLETIC FIELD

**MAP OF**  
**RAVENDEN SPRINGS**  
 RANDOLPH COUNTY, ARKANSAS  
 ARKANSAS STATE HIGHWAY  
 AND TRANSPORTATION DEPARTMENT  
 PLANNING AND RESEARCH DIVISION  
 IN COOPERATION WITH  
 U. S. DEPARTMENT OF TRANSPORTATION  
 FEDERAL HIGHWAY ADMINISTRATION

1000 0 1000 2000  
 SCALE IN FEET

JUNE 2008  
 POPULATION 118 - 2010 CENSUS

