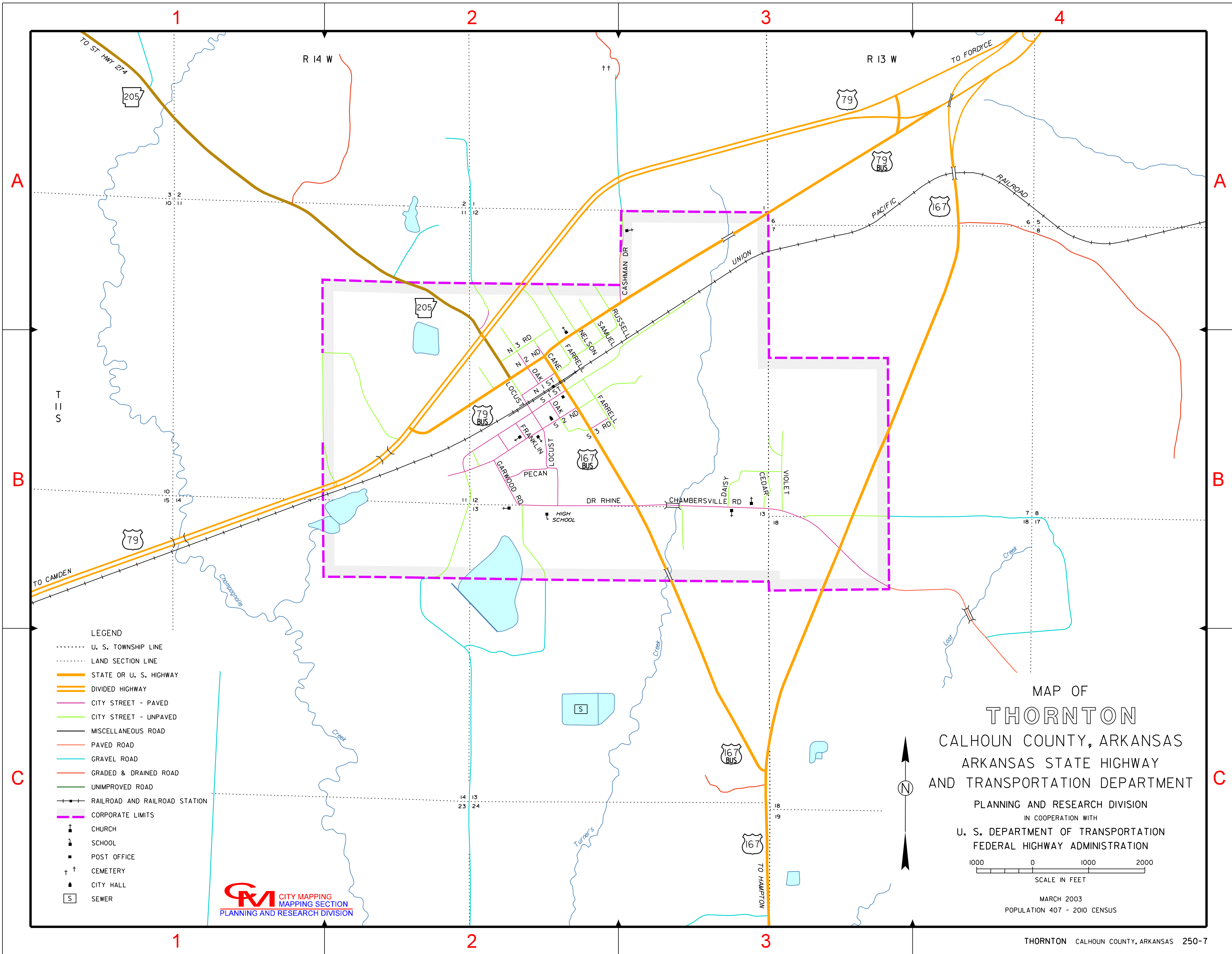


INDEX

CANE	B-2
CASHMAN DR	A-3
CEDAR	B-3
CHAMBERSVILLE RD	B-3
DAISY	B-3
DR RHINE	B-2
FARRELL	B-2
FRANKLIN	B-2
GARWOOD RD	B-2
LOCUST	B-2
N 1 ST	B-2
N 2 ND	B-2
N 3 RD	B-2
NELSON	B-2
OAK	B-2
PECAN	B-2
RUSSELL	A-3
S 1 ST	B-2
S 2 ND	B-2
S 3 RD	B-2
SAMUEL	B-2
VIOLET	B-3



- LEGEND**
- U. S. TOWNSHIP LINE
 - LAND SECTION LINE
 - STATE OR U. S. HIGHWAY
 - DIVIDED HIGHWAY
 - CITY STREET - PAVED
 - CITY STREET - UNPAVED
 - MISCELLANEOUS ROAD
 - PAVED ROAD
 - GRAVEL ROAD
 - GRADED & DRAINED ROAD
 - UNIMPROVED ROAD
 - +—— RAILROAD AND RAILROAD STATION
 - +—— CORPORATE LIMITS
 - † CHURCH
 - † SCHOOL
 - POST OFFICE
 - † † CEMETERY
 - ▲ CITY HALL
 - SEWER

CM CITY MAPPING
MAPPING SECTION
PLANNING AND RESEARCH DIVISION

MAP OF
THORNTON
CALHOUN COUNTY, ARKANSAS
ARKANSAS STATE HIGHWAY
AND TRANSPORTATION DEPARTMENT

PLANNING AND RESEARCH DIVISION
IN COOPERATION WITH
U. S. DEPARTMENT OF TRANSPORTATION
FEDERAL HIGHWAY ADMINISTRATION

SCALE IN FEET
1000 0 1000 2000

MARCH 2003
POPULATION 407 - 2010 CENSUS