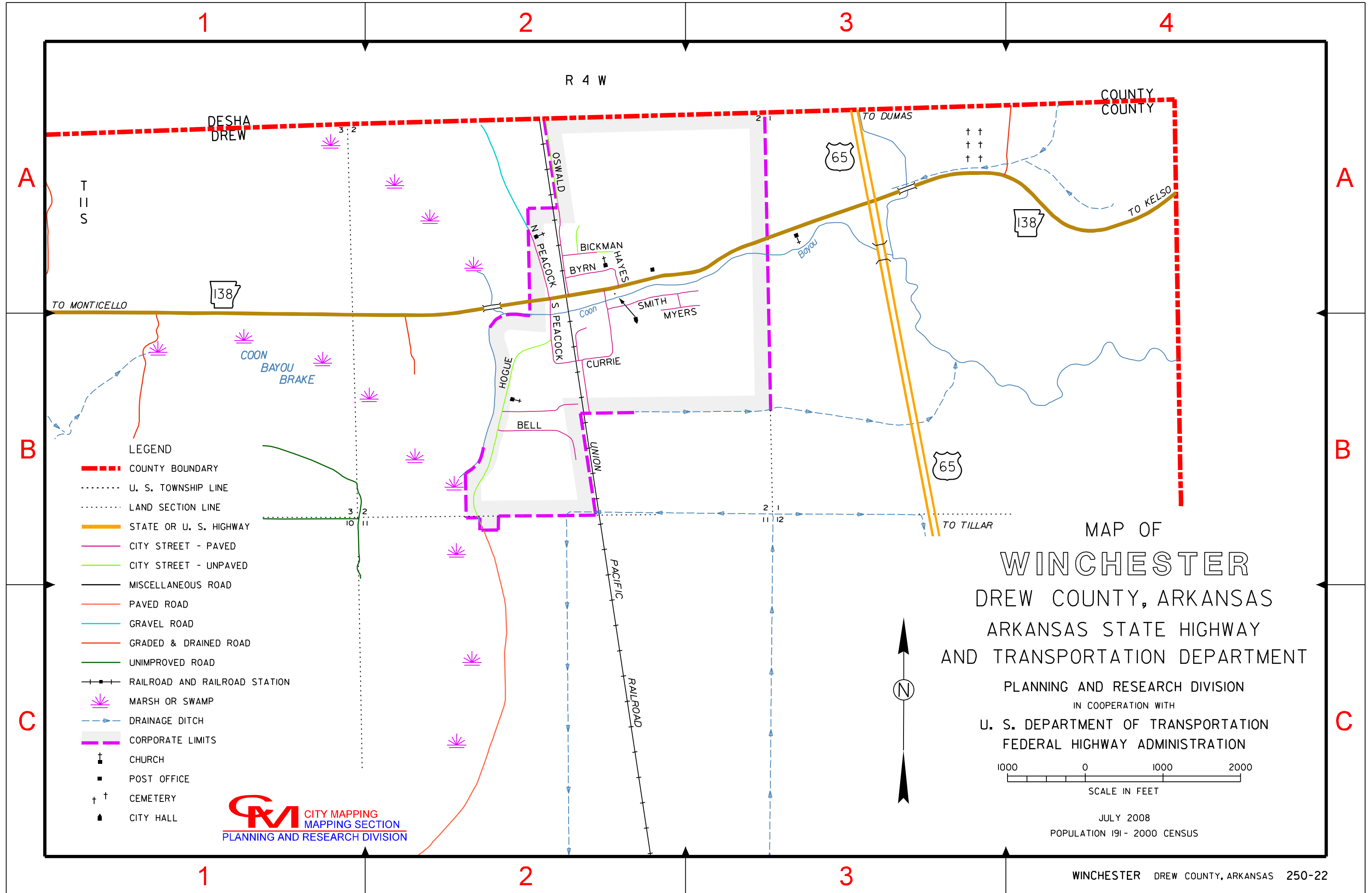


INDEX

BELL	B-2
BICKMAN	A-2
BYRN	A-2
CURRIE	B-2
HAYES	A-2
HOGUE	B-2
MYERS	A-2
N. PEACOCK	A-2
OSWALD	A-2
S. PEACOCK	B-2
SMITH	A-2



LEGEND

- - - COUNTY BOUNDARY
- - - - - U. S. TOWNSHIP LINE
- - - - - LAND SECTION LINE
- STATE OR U. S. HIGHWAY
- CITY STREET - PAVED
- CITY STREET - UNPAVED
- MISCELLANEOUS ROAD
- PAVED ROAD
- GRAVEL ROAD
- GRADED & DRAINED ROAD
- UNIMPROVED ROAD
- + + RAILROAD AND RAILROAD STATION
- ✱ MARSH OR SWAMP
- - - - - DRAINAGE DITCH
- - - - - CORPORATE LIMITS
- † CHURCH
- POST OFFICE
- † † CEMETERY
- ▲ CITY HALL

CM CITY MAPPING
MAPPING SECTION
PLANNING AND RESEARCH DIVISION

MAP OF WINCHESTER DREW COUNTY, ARKANSAS ARKANSAS STATE HIGHWAY AND TRANSPORTATION DEPARTMENT

PLANNING AND RESEARCH DIVISION
IN COOPERATION WITH
U. S. DEPARTMENT OF TRANSPORTATION
FEDERAL HIGHWAY ADMINISTRATION



JULY 2008
POPULATION 191 - 2000 CENSUS